

CAPITAL REGIONAL DISTRICT - INTEGRATED WATER SERVICES

Water Watch for January 05, 2025

Water Supply System Summary:

1. Useable Volume in Storage:

Reservoir	January 31 5 Year Ave		January 31/24		January 5/25		% Existing Full Storage
	ML	MIG	ML	MIG	ML	MIG	
Sooke	91,121	20,047	92,678	20,389	87,485	19,247	94.3%
Goldstream	9,341	2,055	9,825	2,162	9,907	2,180	99.9%
Total	100,462	22,102	102,503	22,551	97,392	21,426	94.9%

2. Average Daily Demand:

For the month of January	102.0 MLD	22.43 MIGD
For week ending January 05, 2025	102.4 MLD	22.53 MIGD
Max. day January 2025, to date:	104.9 MLD	23.08 MIGD

3. Average 5 Year Daily Demand for January

Average (2020 - 2024)	104.3 MLD ¹	22.95 MIGD ²
-----------------------	------------------------	-------------------------

¹MLD = Million Litres Per Day²MIGD = Million Imperial Gallons Per Day

4. Rainfall January:

Average (1914 - 2024):	272.8 mm
Actual Rainfall to Date	21.6 mm (8% of monthly average)

5. Rainfall: Sep 1- Jan 5

Average (1914 - 2024):	837.6 mm
2024/2025	873.8 mm (104% of average)

6. Water Conservation Action Required:

To avoid possible leaks this spring, now is the time to winterize your sprinkler system.
Visit our website at www.crd.bc.ca/water for more information.

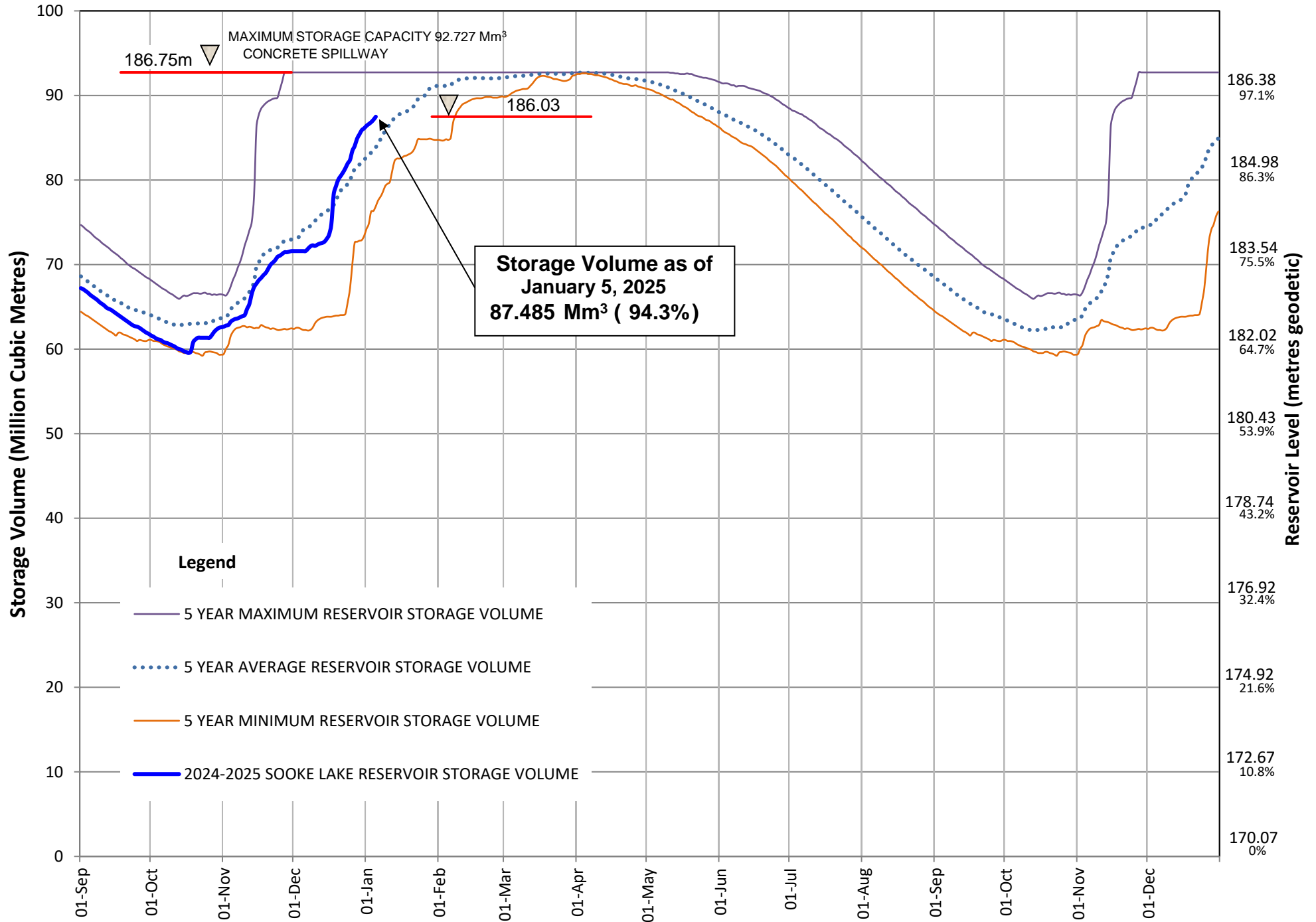
If you require further information, please contact:

Alicia Fraser, P. Eng.
General Manager, CRD - Integrated Water Services
or
Glenn Harris, Ph D., RPBio
Senior Manager - Environmental Protection

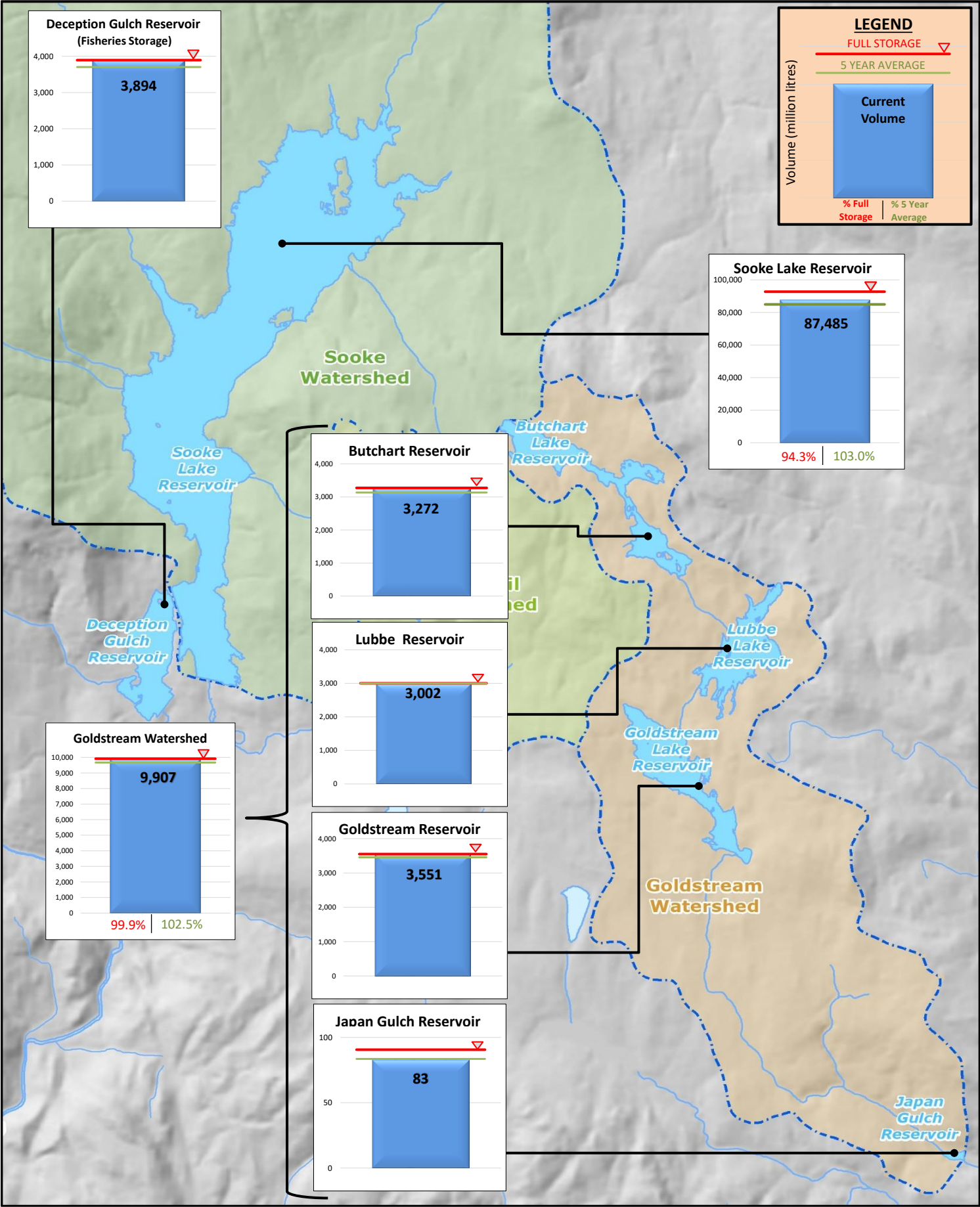
Capital Regional District Integrated Water Services
479 Island Highway
Victoria, BC V9B 1H7
(250) 474-9600

SOOKE LAKE RESERVOIR STORAGE SUMMARY

2024 / 2025

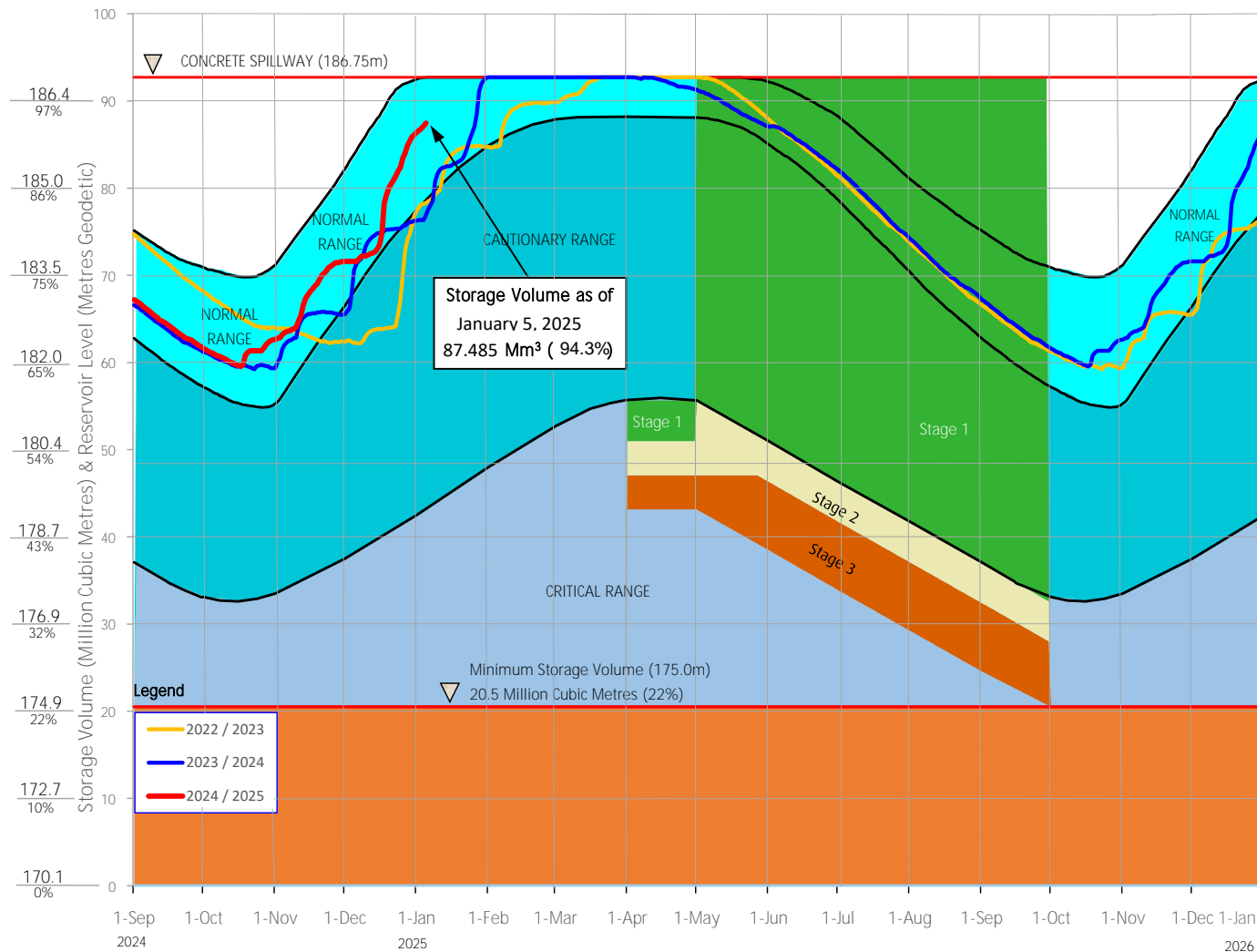


Useable Reservoir Volumes in Storage for January 05, 2025



Sooke Lake Reservoir Storage Level

Water Supply Management Plan



FAQs

How are water restriction stages determined?

Several factors are considered when determining water use restriction stages, including,

1. Time of year and typical seasonal water demand trends;
2. Precipitation and temperature conditions and forecasts;
3. Storage levels and storage volumes of water reservoirs (Sooke Lake Reservoir and the Goldstream Reservoirs) and draw down rates;
4. Stream flows and Inflows Into Sooke Lake Reservoir;
5. Water usage, recent consumption and trends; and customer compliance with restriction;
6. Water supply system performance.

The Regional Water Supply Commission will consider the above factors in making a determination to implement stage 2 or 3 restrictions, under the Water Conservation Bylaw.

At any time of the year and regardless of the water use restriction storage, customers are encouraged to limit discretionary water use in order to maximize the amount of water in the Regional Water Supply System Reservoirs available for nondiscretionary potable water use.

Stage 1 is normally initiated every year from May 1 to September 30 to manage outdoor use during the summer months. During this time, lawn watering is permitted twice a week at different times for even and odd numbered addresses.

Stage 2 is initiated when it is determined that there is an acute water supply shortage. During this time, lawn water is permitted once a week at different times for even and odd numbered addresses.

Stage 3 is initiated when it is determined that there is a severe water supply shortage. During this time, lawn watering is not permitted. Other outdoor water use activities are restricted as well.

For more information, visit www.crd.bc.ca/drinkingwater

CRD
Making a difference...together