

CAPITAL REGIONAL DISTRICT - INTEGRATED WATER SERVICES

Water Watch for April 20, 2025

Water Supply System Summary:

1. Useable Volume in Storage:

Reservoir	April 30 5 Year Ave		April 30/24		April 20/25		% Existing Full Storage
	ML	MIG	ML	MIG	ML	MIG	
Sooke	91,755	20,186	91,352	20,097	92,383	20,324	99.6%
Goldstream	9,331	2,053	9,825	2,162	9,905	2,179	99.9%
Total	101,086	22,239	101,177	22,259	102,288	22,503	99.7%

2. Average Daily Demand:

For the month of April	114.7 MLD	25.24 MIGD
For week ending April 20, 2025	121.1 MLD	26.64 MIGD
Max. day April 2025, to date:	126.0 MLD	27.73 MIGD

3. Average 5 Year Daily Demand for April

Average (2020 - 2024)	116.1 MLD ¹	25.55 MIGD ²
	¹ MLD = Million Litres Per Day	² MIGD = Million Imperial Gallons Per Day

4. Rainfall April:

Average (1914 - 2024):	89.5 mm
Actual Rainfall to Date	37.3 mm (42% of monthly average)

5. Rainfall: Sep 1- Apr 20

Average (1914 - 2024):	1,473.2 mm
2024/2025	1,354.1 mm (92% of average)

6. Water Conservation Required Action:

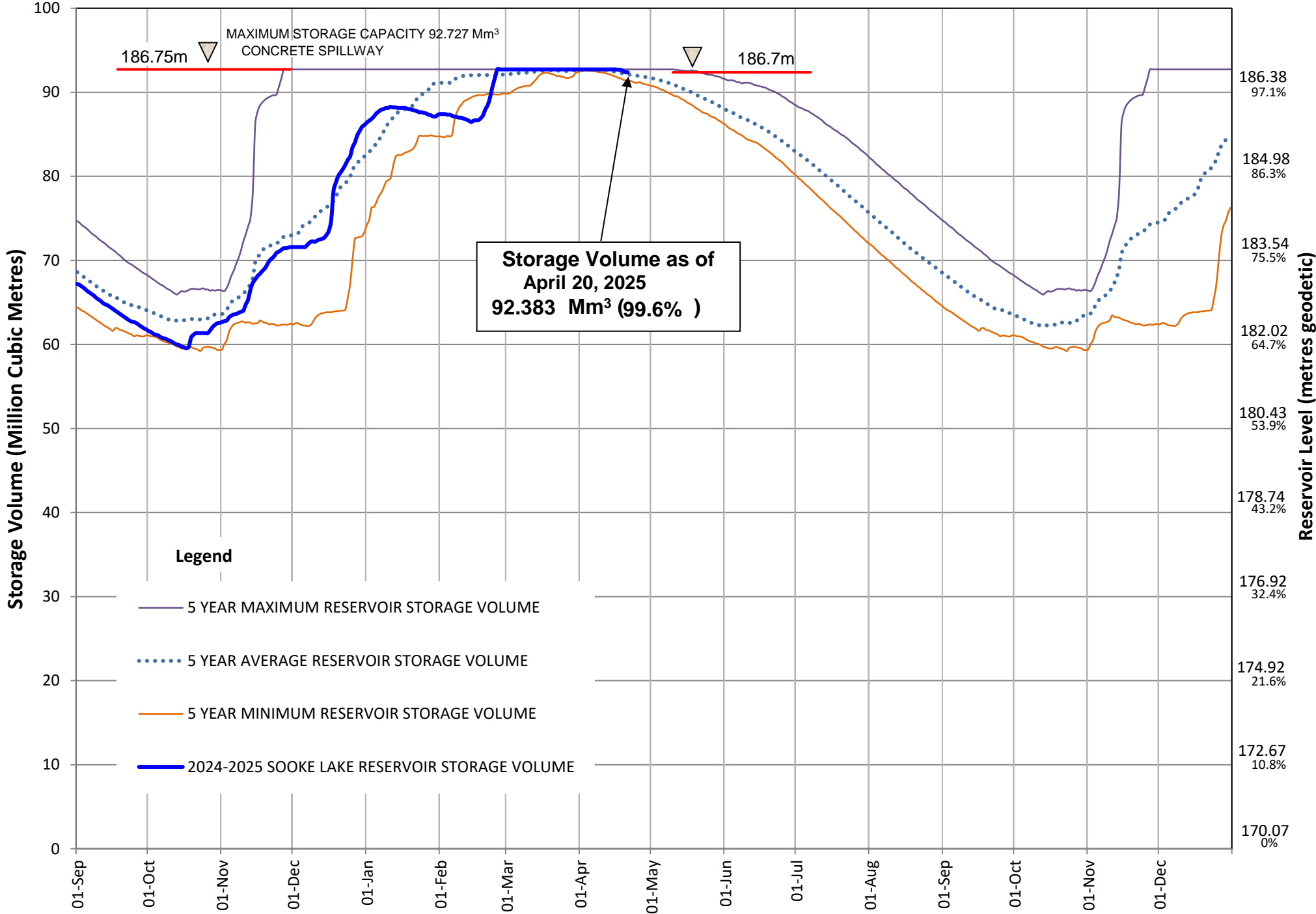
Did you know that the 2024 change to the Water Conservation Bylaw recommends that landowners and residents switch timing of residential irrigation systems from 4:00 am to an expanded window anytime between 12:01 am to 10:00 am on established watering days? Please go to Water Conservation Bylaw Changes | Capital Regional District to get informed and do your part to help protect our regional water supply system.
Website link at <https://www.crd.ca/news/water-conservation-bylaw-changes> for more information.

If you require further information, please contact:

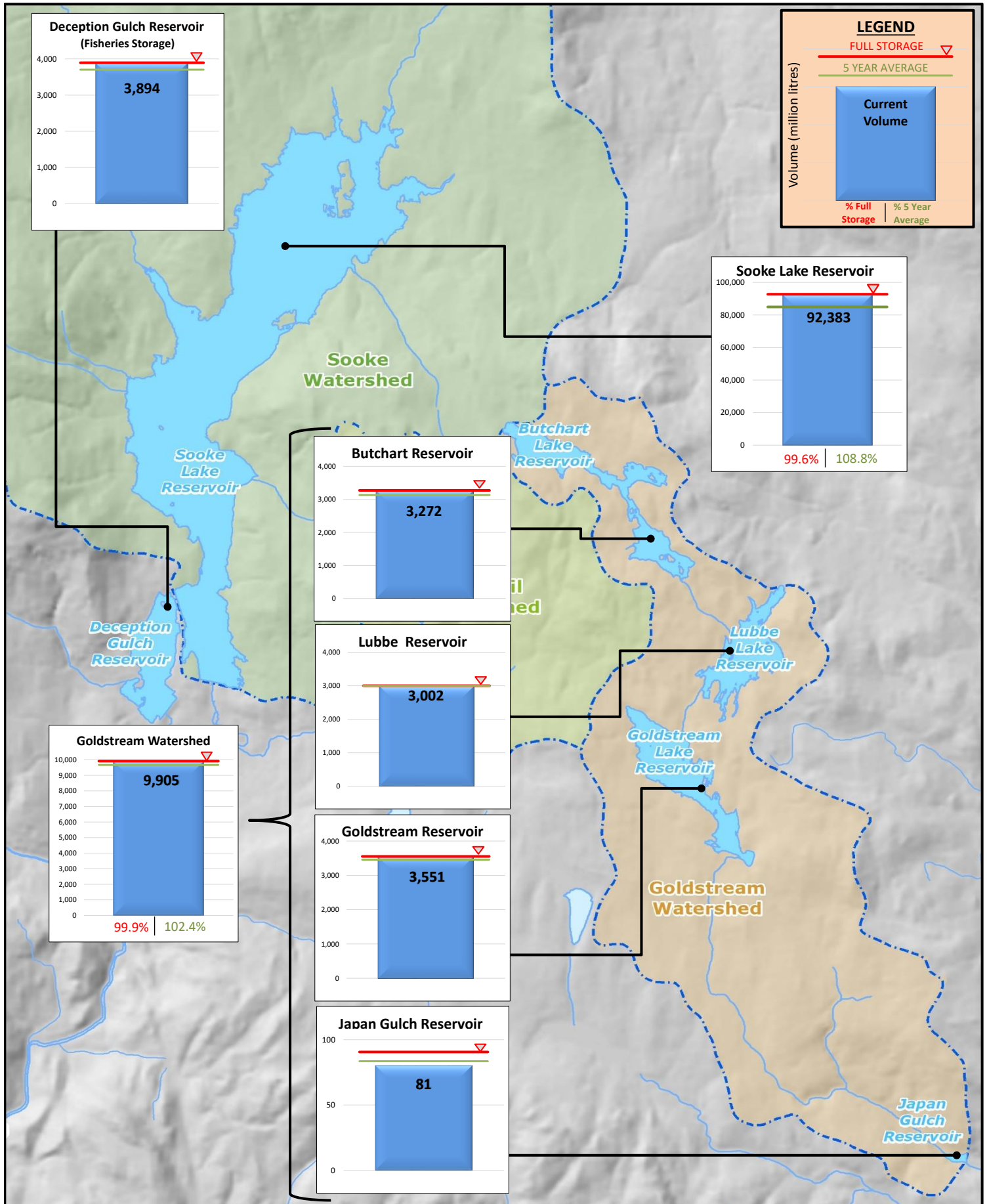
Alicia Fraser, P. Eng.
General Manager, CRD - Integrated Water Services
or
Glenn Harris, Ph D., RPBio
Senior Manager - Environmental Protection

Capital Regional District Integrated Water Services
479 Island Highway
Victoria, BC V9B 1H7
(250) 474-9600

SOOKE LAKE RESERVOIR STORAGE SUMMARY
2024 / 2025

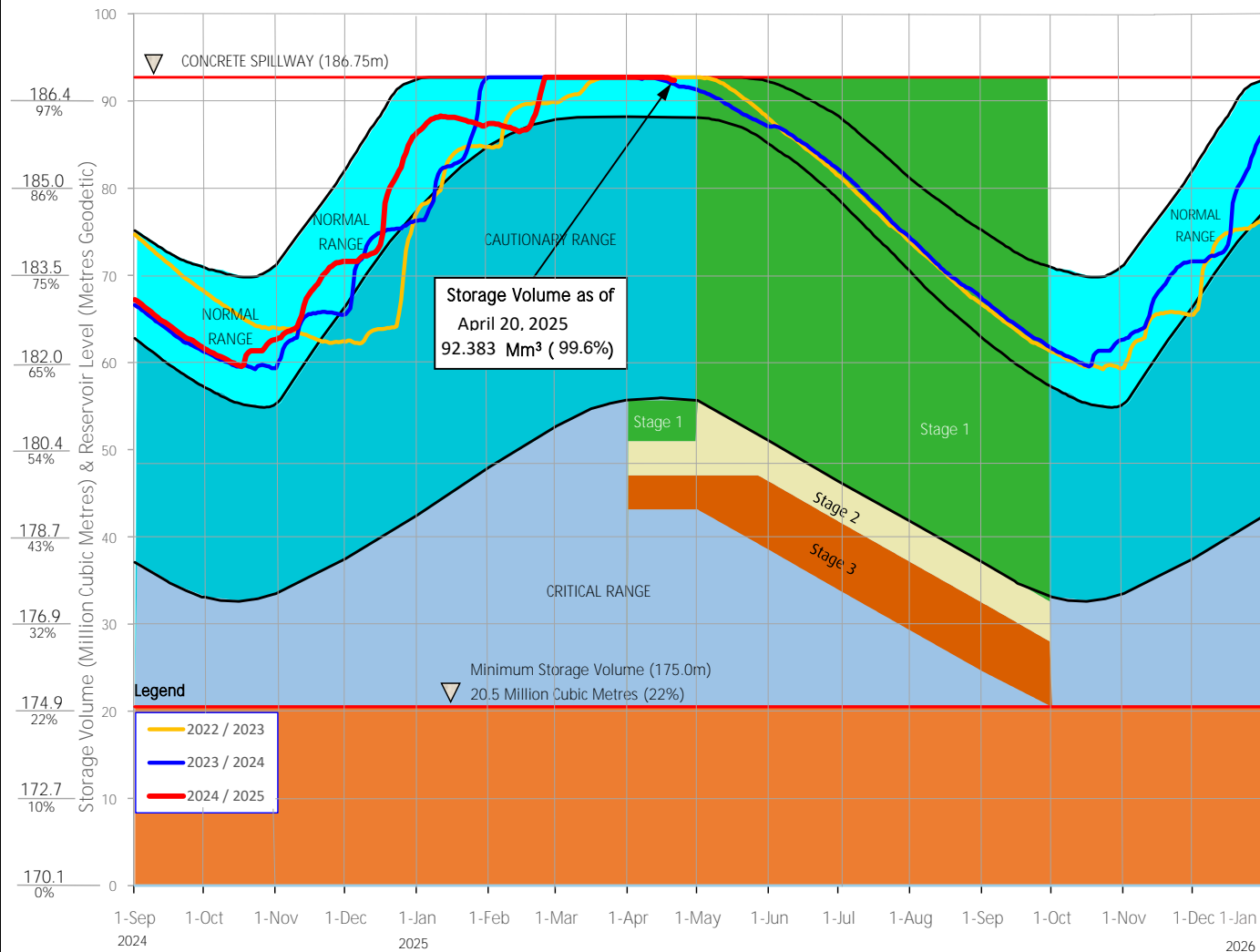


Useable Reservoir Volumes in Storage for April 20, 2025



Sooke Lake Reservoir Storage Level

Water Supply Management Plan



FAQs

How are water restriction stages determined?

Several factors are considered when determining water use restriction stages, including,

1. Time of year and typical seasonal water demand trends;
2. Precipitation and temperature conditions and forecasts;
3. Storage levels and storage volumes of water reservoirs (Sooke Lake Reservoir and the Goldstream Reservoirs) and draw down rates;
4. Stream flows and inflows into Sooke Lake Reservoir;
5. Water usage, recent consumption and trends; and customer compliance with restriction;
6. Water supply system performance.

The Regional Water Supply Commission will consider the above factors in making a determination to implement stage 2 or 3 restrictions, under the Water Conservation Bylaw.

At any time of the year and regardless of the water use restriction storage, customers are encouraged to limit discretionary water use in order to maximize the amount of water in the Regional Water Supply System Reservoirs available for nondiscretionary potable water use.

Stage 1 is normally initiated every year from May 1 to September 30 to manage outdoor use during the summer months. During this time, lawn watering is permitted twice a week at different times for even and odd numbered addresses.

Stage 2 is initiated when it is determined that there is an acute water supply shortage. During this time, lawn watering is permitted once a week at different times for even and odd numbered addresses.

Stage 3 is initiated when it is determined that there is a severe water supply shortage. During this time, lawn watering is not permitted. Other outdoor water use activities are restricted as well.

For more information, visit www.crd.bc.ca/drinkingwater

CRD
Making a difference...together