

## CAPITAL REGIONAL DISTRICT - INTEGRATED WATER SERVICES

### Water Watch for June 29, 2025

#### Water Supply System Summary:

##### 1. Useable Volume in Storage:

| Reservoir  | June 30<br>5 Year Ave |        | June 30/24 |        | June 29/25 |        | % Existing<br>Full Storage |
|------------|-----------------------|--------|------------|--------|------------|--------|----------------------------|
|            | ML                    | MIG    | ML         | MIG    | ML         | MIG    |                            |
| Sooke      | 83,071                | 18,276 | 82,315     | 18,109 | 80,049     | 17,611 | 86.3%                      |
| Goldstream | 8,841                 | 1,945  | 9,383      | 2,064  | 9,004      | 1,981  | 90.8%                      |
| Total      | 91,912                | 20,221 | 91,698     | 20,174 | 89,053     | 19,592 | 86.8%                      |

##### 2. Average Daily Demand:

|                               |           |            |
|-------------------------------|-----------|------------|
| For the month of June         | 193.8 MLD | 42.64 MIGD |
| For week ending June 29, 2025 | 187.0 MLD | 41.14 MIGD |
| Max. day June 2025, to date:  | 219.6 MLD | 48.32 MIGD |

##### 3. Average 5 Year Daily Demand for June

|                       |   |  |
|-----------------------|---|--|
| Average (2020 - 2024) | 177.1 MLD <sup>1</sup>                    | 38.97 MIGD <sup>2</sup>                              |
|                       | <sup>1</sup> MLD = Million Litres Per Day | <sup>2</sup> MIGD = Million Imperial Gallons Per Day |

##### 4. Rainfall June:

|                         |                                  |
|-------------------------|----------------------------------|
| Average (1914 - 2024):  | 35.5 mm                          |
| Actual Rainfall to Date | 12.4 mm (35% of monthly average) |

##### 5. Rainfall: Sep 1- Jun 29

|                        |                             |
|------------------------|-----------------------------|
| Average (1914 - 2024): | 1,579.6 mm                  |
| 2024/2025              | 1,420.4 mm (90% of average) |

##### 6. Water Conservation Required Action:

Did you know that the 2024 change to the Water Conservation Bylaw recommends that landowners and residents switch timing of residential irrigation systems from 4:00 am to an expanded window anytime between 12:01 am to 10:00 am on established watering days? Please go to Water Conservation Bylaw Changes | Capital Regional District to get informed and do your part to help protect our regional water supply system.

Website: <https://www.crd.ca/news/water-conservation-bylaw-changes>

For general information regarding water conservation, visit the CRD webpage linked below:  
CRD Water Conservation Homepage: <https://www.crd.ca/environment/water-conservation>

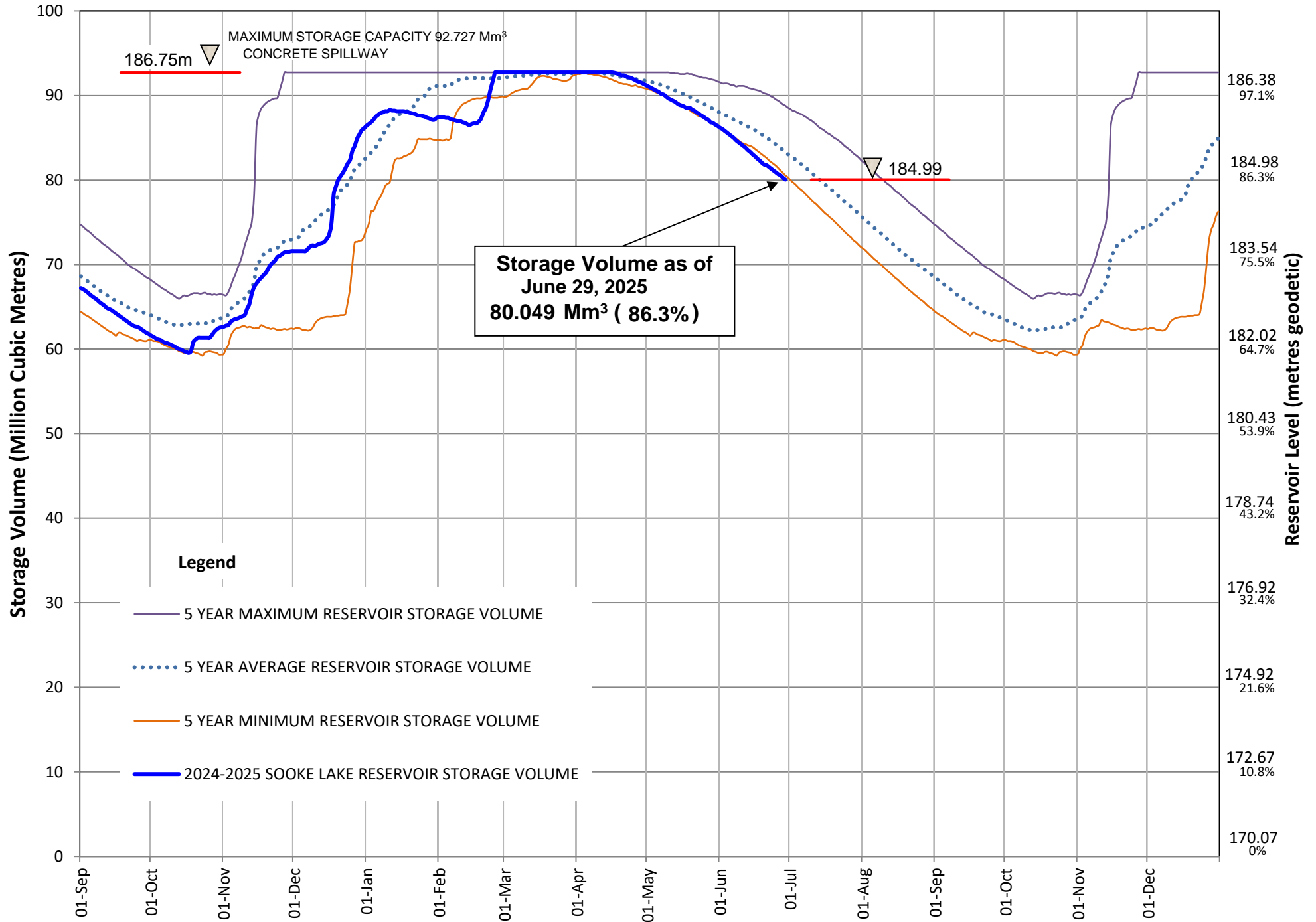
If you require further information, please contact:

Alicia Fraser, P. Eng.  
General Manager, CRD - Integrated Water Services  
or  
Glenn Harris, Ph D., RPBio  
Senior Manager - Environmental Protection

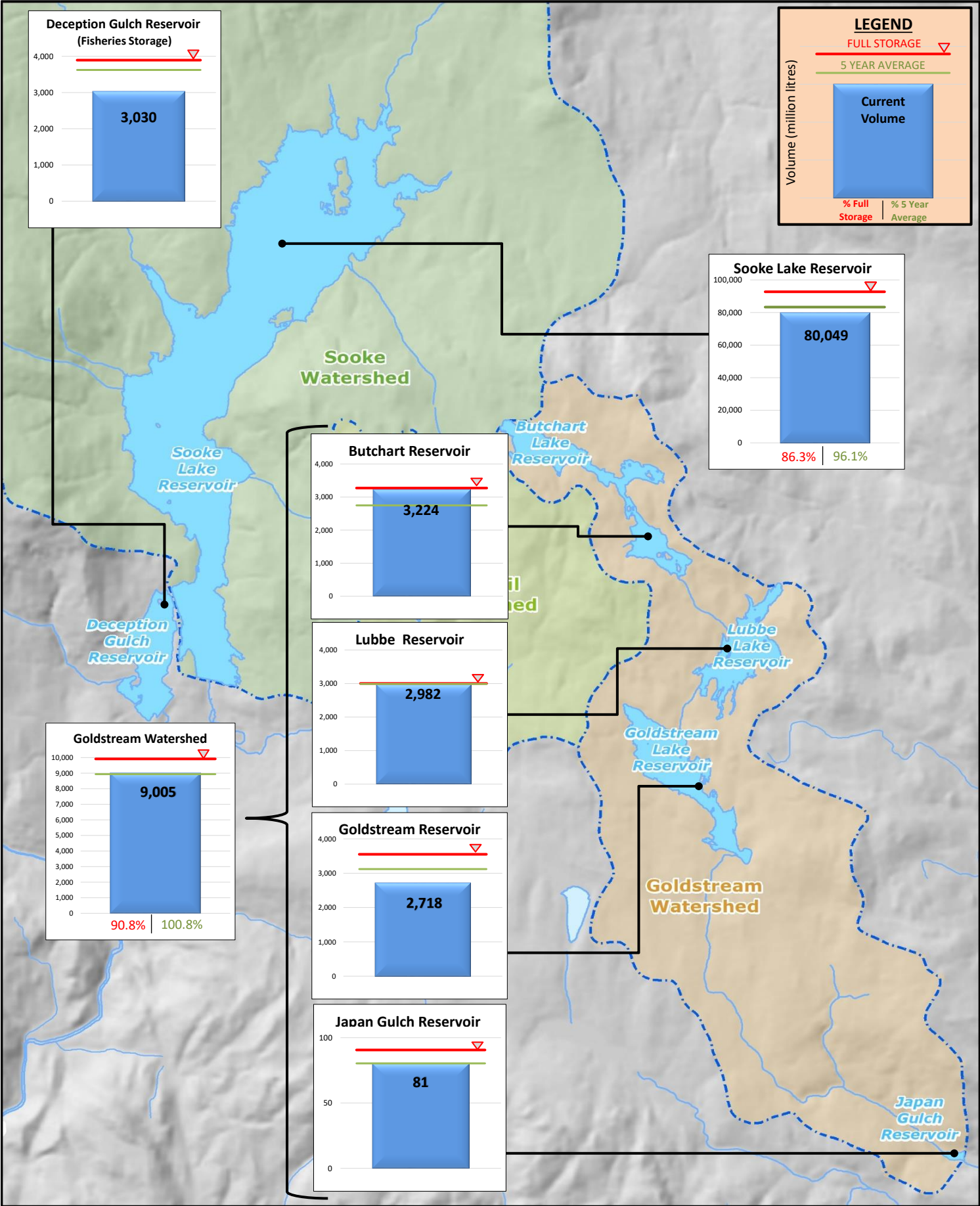
Capital Regional District Integrated Water Services  
479 Island Highway  
Victoria, BC V9B 1H7  
(250) 474-9600

# SOOKE LAKE RESERVOIR STORAGE SUMMARY

## 2024 / 2025

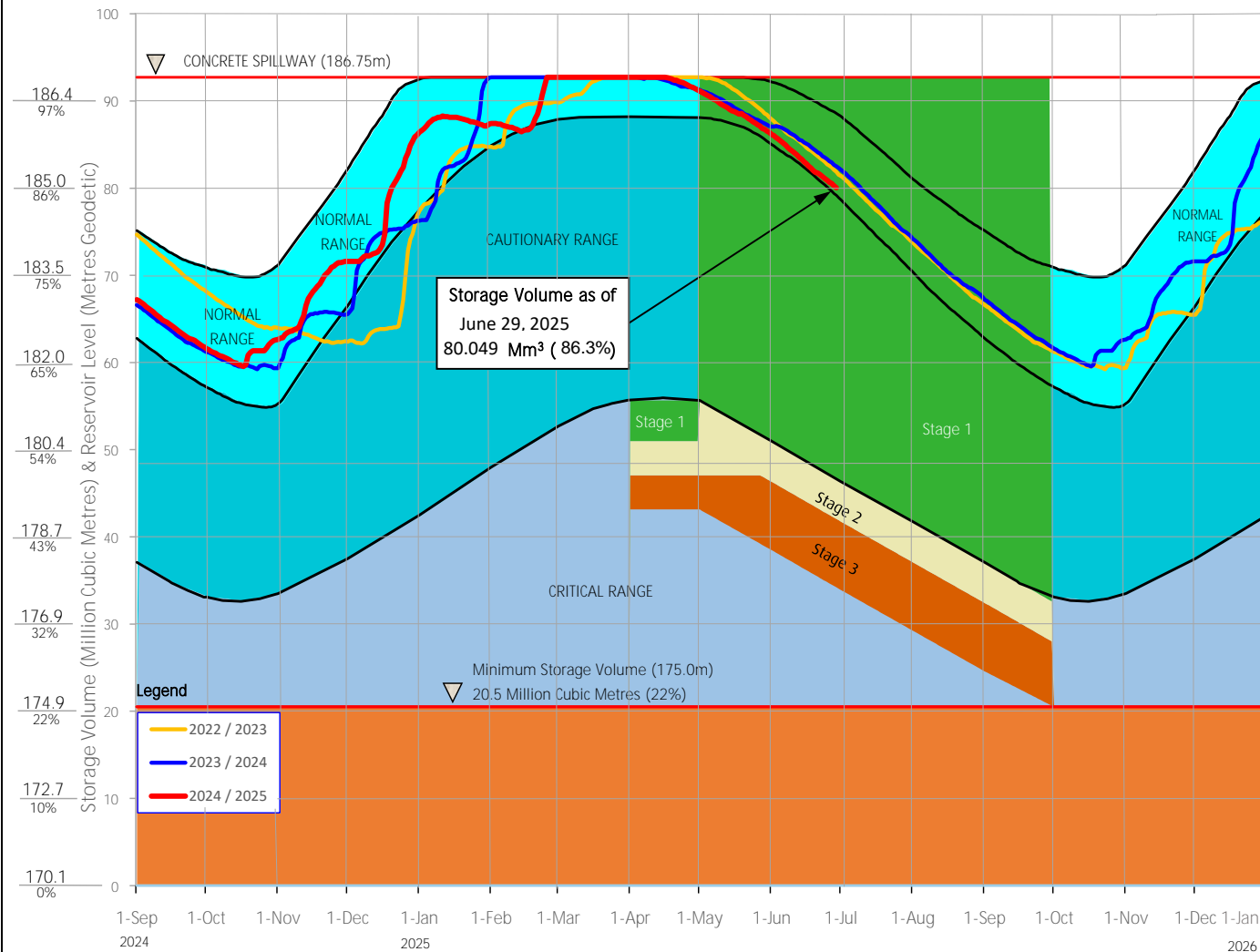


**Useable Reservoir Volumes in Storage for June 29, 2025**



# Sooke Lake Reservoir Storage Level

## Water Supply Management Plan



## FAQs

How are water restriction stages determined?

Several factors are considered when determining water use restriction stages, including,

1. Time of year and typical seasonal water demand trends;
2. Precipitation and temperature conditions and forecasts;
3. Storage levels and storage volumes of water reservoirs (Sooke Lake Reservoir and the Goldstream Reservoirs) and draw down rates;
4. Stream flows and Inflows Into Sooke Lake Reservoir;
5. Water usage, recent consumption and trends; and customer compliance with restriction;
6. Water supply system performance.

The Regional Water Supply Commission will consider the above factors in making a determination to implement stage 2 or 3 restrictions, under the Water Conservation Bylaw.

At any time of the year and regardless of the water use restriction storage, customers are encouraged to limit discretionary water use in order to maximize the amount of water in the Regional Water Supply System Reservoirs available for nondiscretionary potable water use.

Stage 1 is normally initiated every year from May 1 to September 30 to manage outdoor use during the summer months. During this time, lawn watering is permitted twice a week at different times for even and odd numbered addresses.

Stage 2 is initiated when it is determined that there is an acute water supply shortage. During this time, lawn water is permitted once a week at different times for even and odd numbered addresses.

Stage 3 is initiated when it is determined that there is a severe water supply shortage. During this time, lawn watering is not permitted. Other outdoor water use activities are restricted as well.

For more information, visit [www.crd.bc.ca/drinkingwater](http://www.crd.bc.ca/drinkingwater)

**CRD**  
Making a difference...together