

CAPITAL REGIONAL DISTRICT - INTEGRATED WATER SERVICES

Water Watch for September 28, 2025

Water Supply System Summary:

1. Useable Volume in Storage:

Reservoir	September 30 5 Year Ave		September 30/24		September 28/25		% Existing Full Storage
	ML	MIG	ML	MIG	ML	MIG	
Sooke	63,612	13,995	61,801	13,596	59,472	13,084	64.1%
Goldstream	7,427	1,634	7,914	1,741	7,351	1,617	74.1%
Total	71,039	15,628	69,715	15,337	66,823	14,701	65.1%

2. Average Daily Demand:

For the month of September	174.1 MLD	38.3 MIGD
For week ending September 28, 2025	155.7 MLD	34.3 MIGD
Max. day September 2025, to date:	207.9 MLD	45.7 MIGD

3. Average 5 Year Daily Demand for September

Average (2020 - 2024)	163.9 MLD ¹	36.1 MIGD ²
	¹ MLD = Million Litres Per Day	² MIGD = Million Imperial Gallons Per Day

4. Rainfall September:

Average (1914 - 2024):	65.4 mm
Actual Rainfall to Date	18.0 mm (28% of monthly average)

5. Rainfall: Sep 1- Sep 28

Average (1914 - 2024):	58.2 mm
2025/2026	18.0 mm (31% of average)

6. Water Conservation Required Action:

Did you know that the 2024 change to the Water Conservation Bylaw recommends that landowners and residents switch timing of residential irrigation systems from 4:00 am to an expanded window anytime between 12:01 am to 10:00 am on established watering days? Please go to Water Conservation Bylaw Changes | Capital Regional District to get informed and do your part to help protect our regional water supply system.

Website: <https://www.crd.ca/news/water-conservation-bylaw-changes>

For general information regarding water conservation, visit the CRD webpage linked below:
CRD Water Conservation Homepage: <https://www.crd.ca/environment/water-conservation>

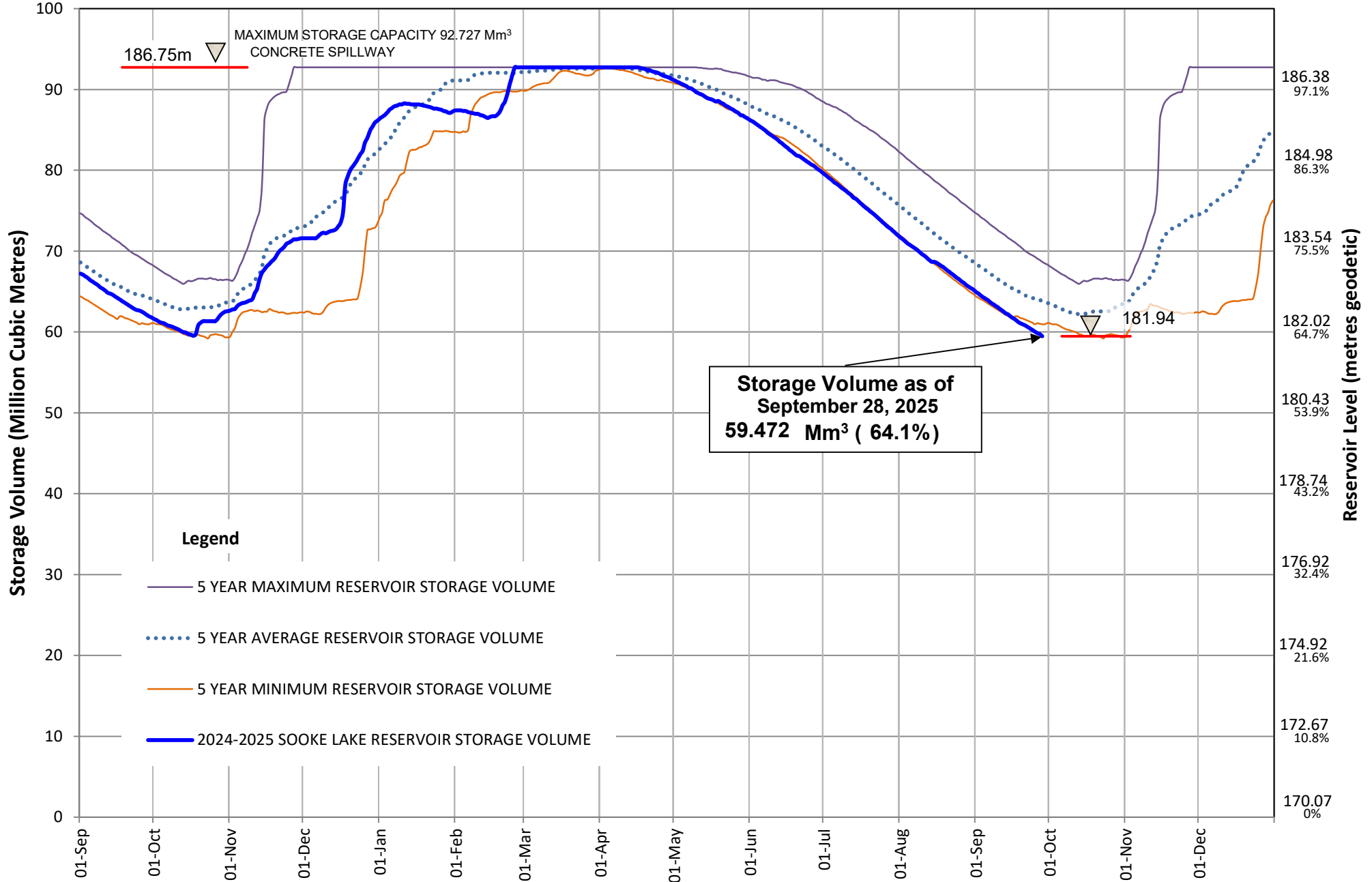
If you require further information, please contact:

Alicia Fraser, P. Eng.
General Manager, CRD - Integrated Water Services
or
Glenn Harris, Ph D., RPBio
Senior Manager - Environmental Protection

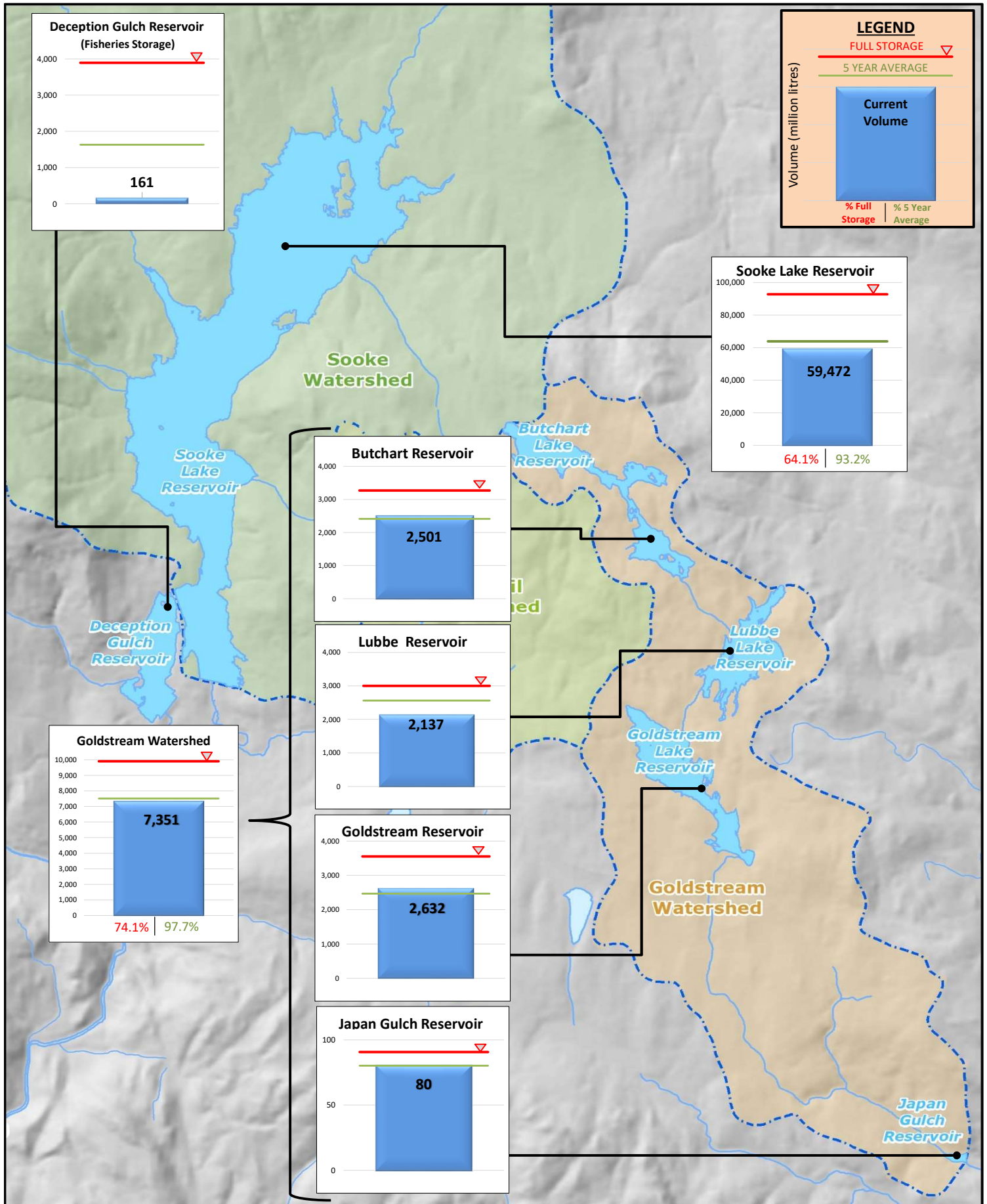
Capital Regional District Integrated Water Services
479 Island Highway
Victoria, BC V9B 1H7
(250) 474-9600

SOOKE LAKE RESERVOIR STORAGE SUMMARY

2024 / 2025

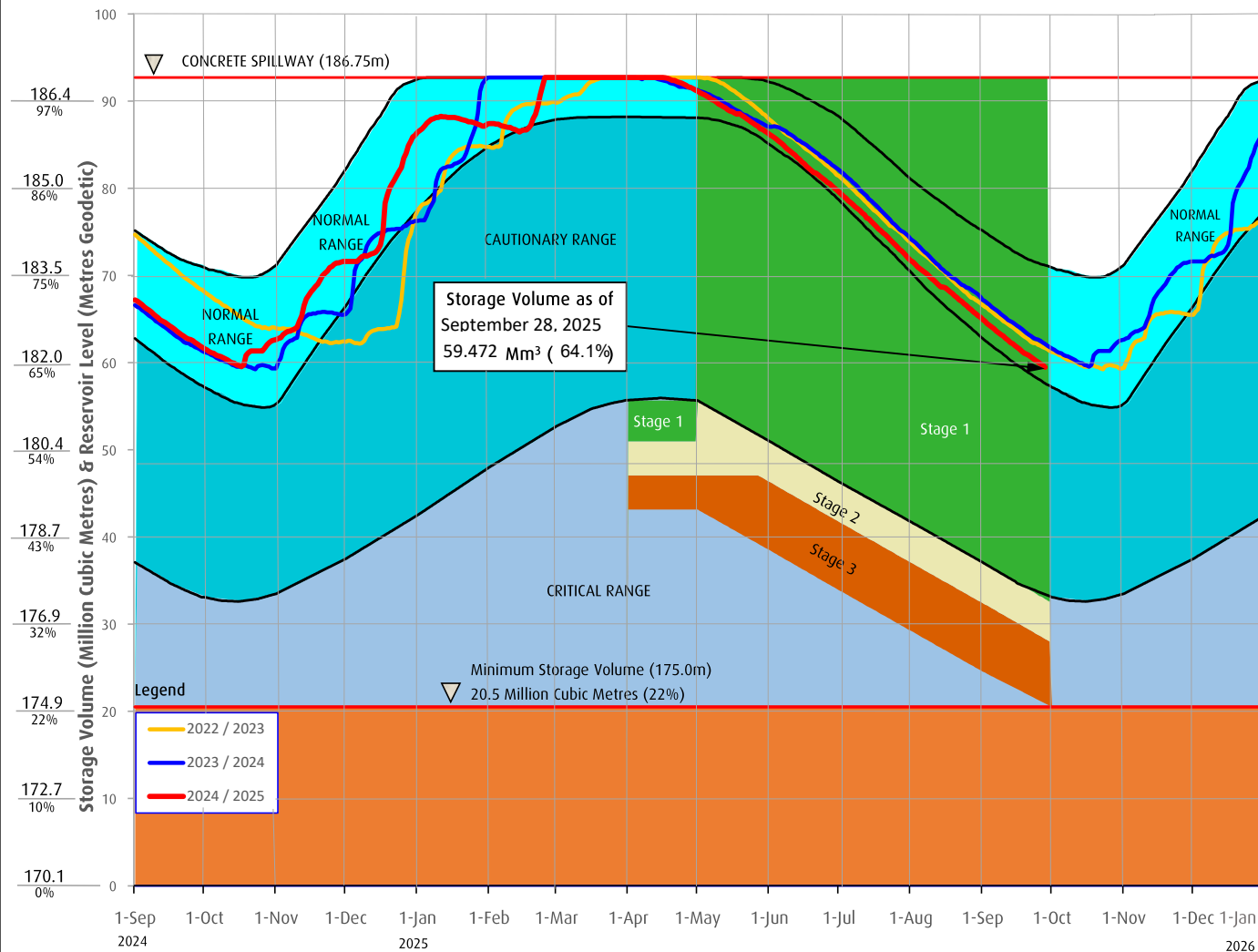


Useable Reservoir Volumes in Storage for September 28, 2025



Sooke Lake Reservoir Storage Level

Water Supply Management Plan



FAQs

How are water restriction stages determined?

Several factors are considered when determining water use restriction stages, including,

1. Time of year and typical seasonal water demand trends;
2. Precipitation and temperature conditions and forecasts;
3. Storage levels and storage volumes of water reservoirs (Sooke Lake Reservoir and the Goldstream Reservoirs) and draw down rates;
4. Stream flows and inflows into Sooke Lake Reservoir;
5. Water usage, recent consumption and trends; and customer compliance with restriction;
6. Water supply system performance.

The Regional Water Supply Commission will consider the above factors in making a determination to implement stage 2 or 3 restrictions, under the Water Conservation Bylaw.

At any time of the year and regardless of the water use restriction storage, customers are encouraged to limit discretionary water use in order to maximize the amount of water in the Regional Water Supply System Reservoirs available for nondiscretionary potable water use.

Stage 1 is normally initiated every year from May 1 to September 30 to manage outdoor use during the summer months. During this time, lawn watering is permitted twice a week at different times for even and odd numbered addresses.

Stage 2 Is initiated when it is determined that there is an acute water supply shortage. During this time, lawn water is permitted once a week at different times for even and odd numbered addresses.

Stage 3 Is initiated when it is determined that there is a severe water supply shortage. During this time, lawn watering is not permitted. Other outdoor water use activities are restricted as well.

For more information, visit www.crd.bc.ca/drinkingwater

CRD
Making a difference...together