

# 2025 Solid Waste Management Plan Progress Report



## TERRITORIAL ACKNOWLEDGEMENT

The CRD conducts its business within the Territories of many First Nations, including but not limited to BOKÉCEN (Pauquachin), MÁLEXEŁ (Malahat), paaʔčiidʔatx (Pacheedaht), Spune'luxutth (Penelekut), Sc'ianew (Beecher Bay), Songhees, STÁUTW (Tsawout), T'Sou-ke, WJOLÉLP (Tsartlip), WSIKEM (Tseycum), and xʷsepsum (Kosapsum) Nations, all of whom have a long-standing relationship with the land and waters from time immemorial that continues to this day.



## Terms and Abbreviations

<b>3Rs</b>	Reduce, Reuse, Recycle
<b>5Rs</b>	Reduce, Reuse, Recycle, Recovery and Residual Management
<b>C&amp;D</b>	Construction and Demolition
<b>CRD</b>	Capital Regional District
<b>EPR</b>	Extended Producer Responsibility
<b>ENV</b>	Ministry of Environment & Parks
<b>GHG</b>	Greenhouse Gas
<b>ICI</b>	Industrial, Commercial and Institutional Sector
<b>MDTS</b>	Material Diversion Transfer Station
<b>MFD</b>	Multi-family Dwelling
<b>MSW</b>	Municipal Solid Waste
<b>PPP</b>	Packaging and Paper Products
<b>RNG</b>	Renewable Natural Gas
<b>SWAC</b>	Solid Waste Advisory Committee
<b>SWMP</b>	Solid Waste Management Plan
<b>WSCI</b>	Waste Stream Collector Incentive

### Cover photos:

Front: Aerial photo of Hartland Landfill with the public drop-off depot in the foreground and closed landfilling area (Cell 2) under a green tarp as temporary cover

Back: Construction of Cell 4 at Hartland Landfill in preparation to receive garbage

# Organizational Overview

The Capital Regional District (CRD) delivers regional, sub-regional and local services to 13 municipalities and three electoral areas on southern Vancouver Island and the Gulf Islands. Governed by a 24-member Board of Directors, the CRD works collaboratively with First Nations and all levels of government to enable sustainable growth, foster community well-being, and develop cost-effective infrastructure, while continuing to provide core services to residents throughout the region.

## Table of Contents

<b>Overview .....</b>	<b>2</b>
Regulations and Commitments.....	2
<b>Solid Waste Management Plan .....</b>	<b>3</b>
Goals .....	4
Focus Areas.....	4
<b>Targets and Tracking .....</b>	<b>5</b>
Per Capita Disposal .....	6
Solid Waste Market Research and Engagement Study .....	7
Solid Waste Stream Composition Study.....	8
Waste Generator Study.....	8
What Goes Where Tool.....	9
<b>Challenges and Opportunities.....</b>	<b>10</b>
Zero-Waste Event Grant.....	11
Blended Biosolids Disposal at Hartland Landfill.....	12
Landfill Gas Collection .....	12
Beneficial Use.....	12
<b>2025 Overall SWMP Progress Summary.....</b>	<b>14</b>
<b>Looking Ahead - 2026.....</b>	<b>22</b>
<b>Appendix A: Solid Waste Management Plan Report Card .....</b>	<b>23</b>





Dumping of material into a controlled waste trench.

## Overview

This Solid Waste Management Plan (SWMP) Progress Report highlights activities undertaken by the CRD in 2025 and satisfies the Ministry of Environment & Parks (ENV) reporting requirements associated with the CRD's SWMP. The SWMP has a target of reducing per capita waste in the region by more than one-third by 2031. Through zero waste and circular economy principles, the plan includes strategies for reducing all streams of solid waste to extend the life of Hartland Landfill to 2100 and beyond.

All costs associated with the CRD's solid waste service are funded through tipping and user fee revenues at Hartland Landfill, collection agreements with product producers, and the sale of landfill gas and recyclables.

### Regulations and Commitments

The CRD became responsible for solid waste disposal for the region in 1973 when, at the request of the CRD Board, the Province of BC established solid waste disposal as a regional function of the CRD. In 1975, the CRD acquired Hartland Landfill and subsequently assumed direct operation of the site in 1985.

The site currently operates under a Design, Operations and Closure Plan, in accordance with an Operational Certificate issued by the ENV, as well as the BC Landfill Criteria for Municipal Solid Waste. There is also a provincial authorization in place for asbestos waste management.

Any solid waste originating from outside of Canada is managed at Hartland Landfill, in accordance with the International Waste Directive under the authority of the Canada Border Service Agency and the Canadian Food Inspection Agency.

## Solid Waste Management Planning

The BC Environmental Management Act requires all regional districts in BC to develop plans for the management of municipal solid waste (MSW) and recyclable materials. Solid waste management planning is a proven way to reduce the amount of solid waste requiring disposal in a region, contributing to the protection of the environment.

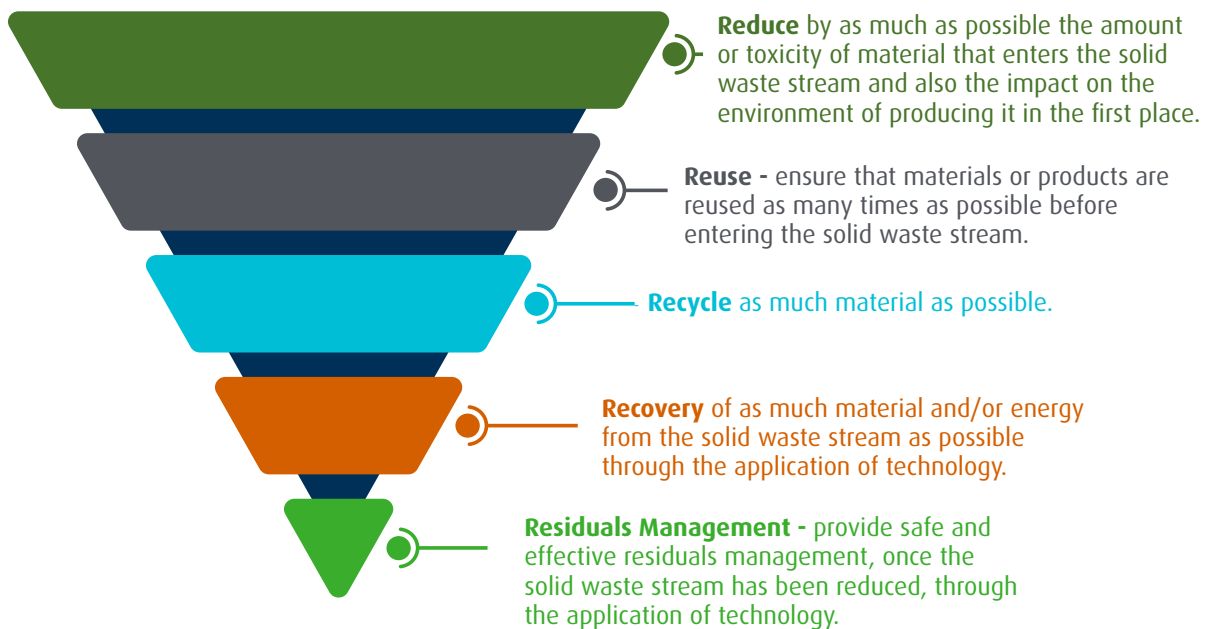
## Landfill Operating and Monitoring Requirements

Hartland Landfill is authorized through an Operational Certificate under the BC Environmental Management Act. The Operational Certificate specifies the relevant environmental legislation applicable to the site and sets out requirements for environmental monitoring and annual reporting. Under this regulatory framework, the CRD has established a comprehensive environmental monitoring program to ensure Hartland is not impacting the surrounding environment. More details can be found in the Hartland Landfill Operating & Environmental Monitoring 2024-2025 Report.

# Solid Waste Management Plan

In BC, regional districts develop SWMPs under the provincial Environmental Management Act that are high-level, long-term visions of how the regional district would like to manage its solid waste, in accordance with the 5R Pollution Prevention Hierarchy.

## 5R Pollution Prevention Hierarchy



The SWMP for the region was endorsed by the CRD Board in May 2021 and was approved by ENV in July 2023. The final Plan includes strategies and actions for reducing and managing all streams of solid waste—including recyclables, compostable material and garbage—with a view to extend the life of Hartland Landfill to 2100 and beyond.

Waste reduction, reuse and recycling can reduce greenhouse gas (GHG) emissions both by lowering the demand for new materials and products (reducing upstream environmental impacts), and by minimizing downstream environmental impacts, such as transporting waste over long distances and disposing of it in landfills.

The SWMP's progress is monitored by the Solid Waste Advisory Committee (SWAC), a committee established by the CRD's Environmental Services Committee to provide input on solid waste management matters and meet the requirements of the ENV's Guide to Solid Waste Management Planning. Members of the SWAC represent a diversity of backgrounds, interests and geographical locations, with a balance between technical and non-technical members and industry and public members.

## Goals

The Province's guidelines for solid waste management planning require SWMPs to have goals—the long-term aims to be achieved as an outcome of the plan. A goal may be achieved within the timeframe of this plan, but a goal may also be aspirational, something for the CRD to strive for beyond that timeframe. The CRD's SWMP goals are:

- To surpass the provincial per capita waste disposal target (350 kg/capita/year) and aspire to achieve a disposal rate of 125 kg/capita/year;
- To extend the life of Hartland Landfill to the year 2100 and beyond;
- To have informed citizens that participate effectively in proper waste management practices; and
- To ensure that the CRD's solid waste services are financially sustainable.

## Focus Areas

The SWMP identifies three focus areas consisting of 15 strategies with 72 actions. Over the lifetime of the SWMP, the strategies and actions it contains form the basis of service plans and work plans that are approved by the Board annually as part of the financial planning process. Collaboration with First Nations Governments, municipalities, other solid waste services, CRD divisions and stakeholders will be integral to this process.

The 15 strategies with 72 actions and associated timelines are divided into the following focus areas:

- Reduce and Reuse
- Recycling
- Recovery and Residuals Management

For more details on the SWMP's 15 strategies, consult *Appendix A: SWMP Report Card*.



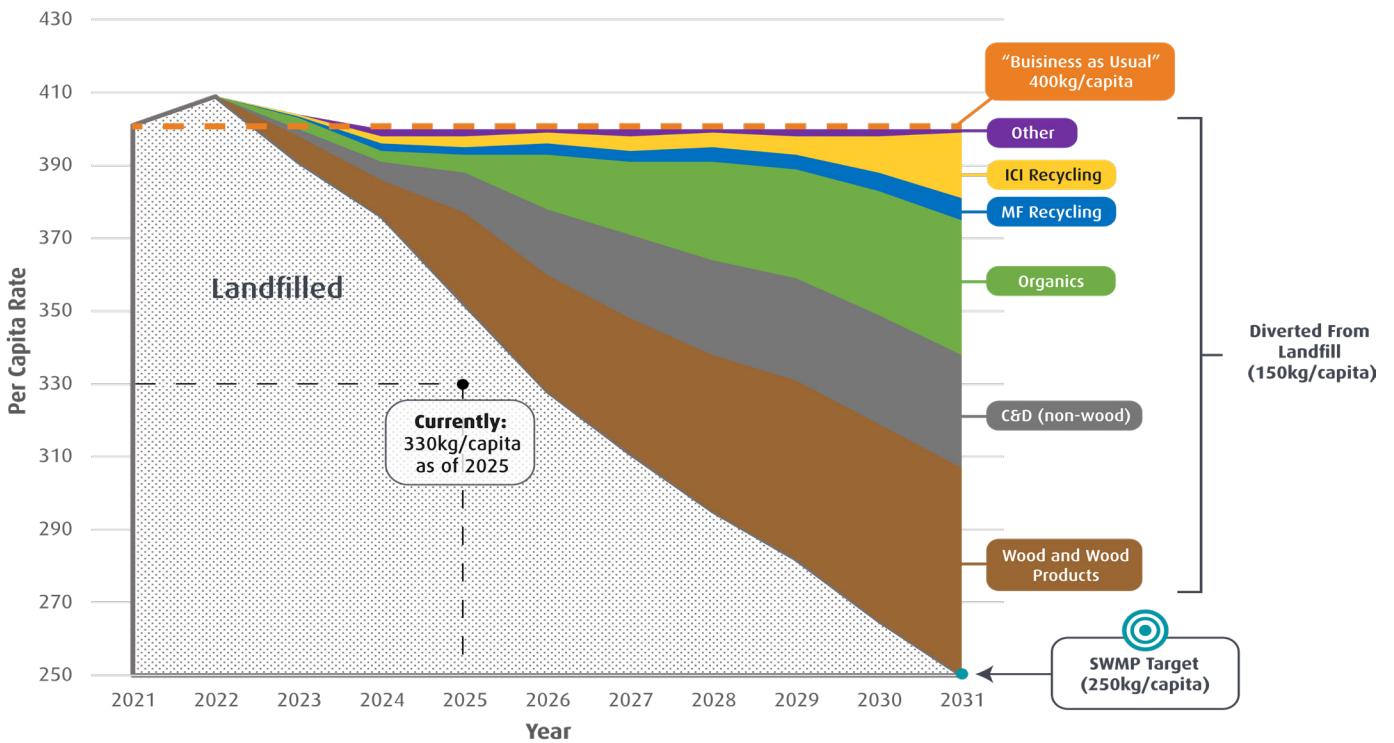
Rewood used funding from the Rethink Waste Community Grant to salvage wood and use it to construct accessible garden beds at Sandown Centre for Regenerative Agriculture.

## Targets and Tracking

The targets established for this plan are focused on reducing the amount of waste landfilled on a per capita basis. By the end of the tenth year of this plan, the capital region’s per capita disposal rate target is 250 kg or less, surpassing the Province’s long-term target of 350 kg per capita.

Below is a chart plotting one conceptual pathway to reducing the regional per capita disposal rate from 2021 levels to 250 kg per capita. The actual path taken to achieve waste reduction targets will depend on the actions the community takes to reduce waste, and the work the CRD does to support diversion activity and redirect waste material back into the economy. The chart represents an aggressive timeline to divert materials from the landfill, in accordance with the strategies and actions in Appendix A: SWMP Report Card.

**Conceptual Pathway of Regional Waste Disposal Rate from 400 kg/capita to 250 kg/capita**



The metrics used to track and monitor progress for SWMP targets in 2025 are the regional per capita disposal rates, operational metrics such as Airspace Utilization Factor and material tonnages processed at the Material Diversion Transfer Station. In 2026, a waste generator study and an updated waste composition study will provide additional data to track and monitor progress towards SWMP targets.

## Per Capita Disposal

In 2012, the Province of BC began using per capita disposal rates as the standard solid waste metric. Regional disposal rates reported to the ENV include general refuse from the residential sector and ICI sources, as well as waste from construction, demolition and renovation activities. Disposal rates do not include controlled waste like asbestos, biomedical, or agricultural waste, heavy industry or contaminated soil.

In the SWMP, the per capita waste disposal rate is used to help the CRD, and residents of the region understand progress towards reaching the plan’s waste reduction goals and targets. The per capita disposal rate reported in 2025 is 330 kg per capita. The reduction in per capita for 2025 can, in part, be attributed to increased participation in source separation requirements and diversion activities, especially with regards to the separation of clean and treated wood and asphalt shingles.

## General Refuse Disposal - Per Capita Disposal Rate for the Capital Region

Plan Year	Population <sup>2</sup>	Hartland Landfill <sup>1</sup>			Disposal Rate (kg/person)	Percentage Change from 2021
		Received	Beneficial Use <sup>3</sup>	Landfilled <sup>4</sup>		
2021	432,062	173,899	-1,013	172,886	400	N/A
2022	439,950	183,397	-5,107	178,290	405	+1.31%
2023	455,092	179,075	-5,100	173,975	382	-4.43%
2024	464,934	168,055	-10,866	157,189	338	-15.48%
2025	455,283	152,447	-2,006	150,441	330	-17.42%

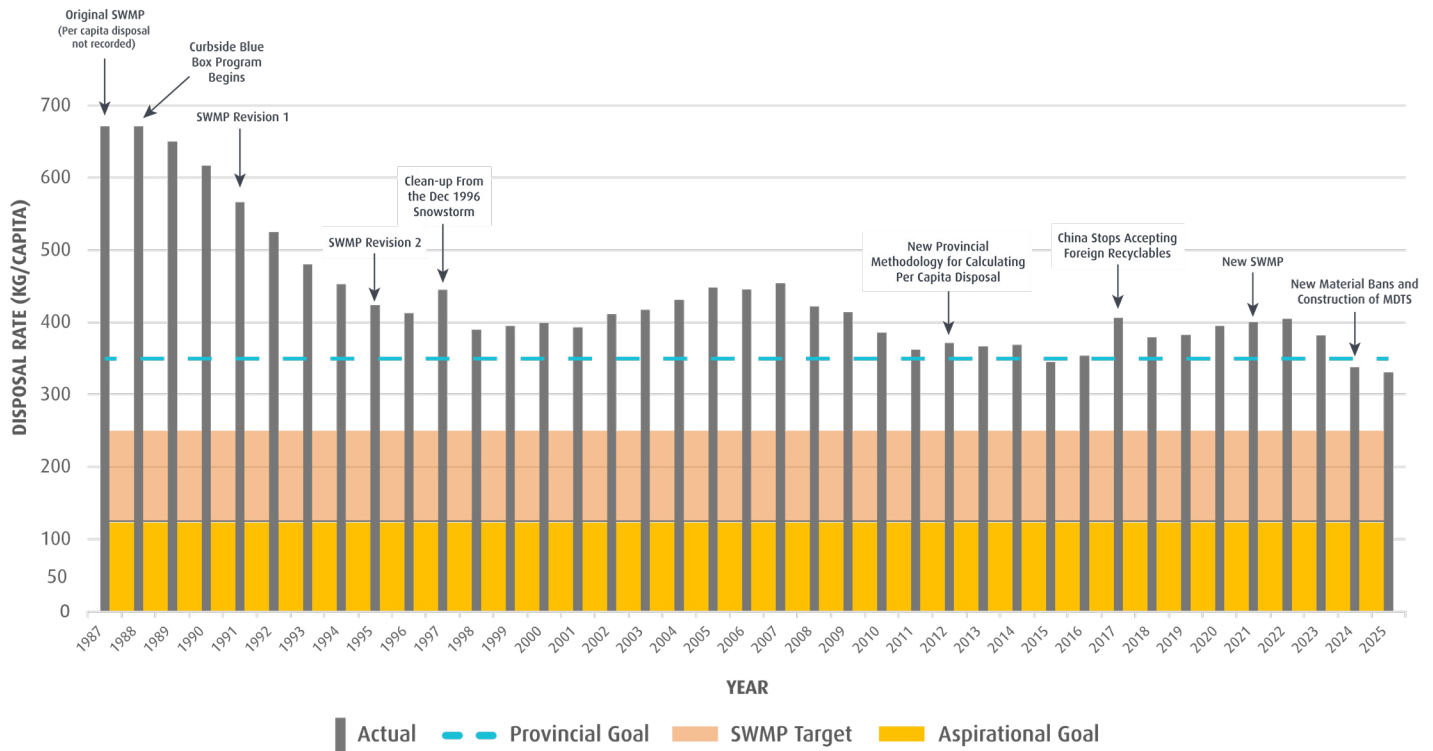
<sup>1</sup> Excludes blended biosolids; see pg.11 for more information.

<sup>2</sup> BC Stats Population Estimates & Projections

<sup>3</sup> Onsite beneficial use of material based on ENV guidelines

<sup>4</sup> The figure for 2021 includes 6,730 tonnes landfilled at Tervita Highwest Landfill

## CRD Historic Per Capita Disposal Rate



## Solid Waste Market Research and Engagement Study

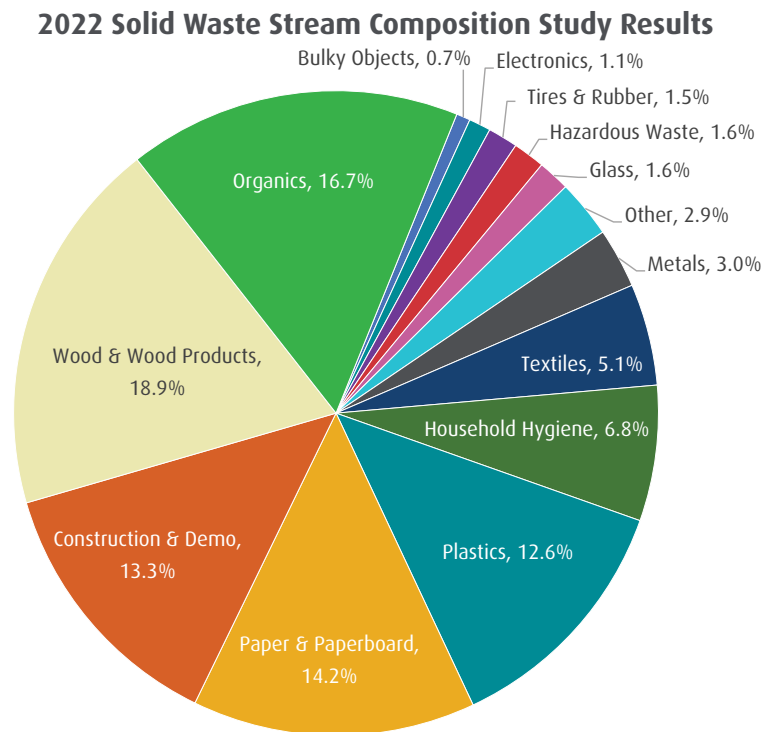
In 2024, the CRD initiated a study to assess behaviours, attitudes, programs, resources and communication strategies related to solid waste within the capital region and to identify areas for improvement. The Market Research and Engagement study is set to be repeated every three years, with the next study scheduled for 2027.

The first study was conducted in 2024 using three surveys targeting residents, Hartland Public Drop-off Depot users and businesses. Results from the study found that 74% of residents reported positive attitudes across five waste management behaviours: reducing waste, supporting circular economy, composting, having confidence in their waste disposal knowledge and supporting community initiatives.

## Solid Waste Stream Composition Study

Solid waste stream composition studies provide valuable benchmark data and analysis for evaluating the success of existing solid waste programs and SWMP initiatives.

Since 1990, the CRD has commissioned seven studies to assess the composition of waste being landfilled at Hartland. The most recent analysis took place in 2022 and the next study will take place in 2026.



## Waste Generator Study

The waste generator study will help the CRD gather data on where waste is generated, such as in households, businesses, industries or communities. Currently, the CRD's diversion data is limited to the recyclable and reusable items accepted at the Hartland Landfill and through administering packaging, and paper product (PPP) contracts on behalf of Recycle BC for the curbside blue box program and the Electoral Area depots. The waste generator study will provide insights into the patterns of waste generation, understand the composition of waste streams and identify opportunities for new waste diversion programs or policies. The study will provide valuable data and analysis for evaluating the success of existing solid waste management programs and for planning future initiatives.

The waste generator study will be the first of its kind for the CRD. The first study will take place in 2026, and results will be included in the 2026 SWMP Progress Report.

## What Goes Where

What Goes Where is a new online tool developed in response to key findings and recommendations from the 2024 Market Research and Engagement Study. The study revealed that many residents lacked clarity on where and how to properly dispose or recycle specific materials such as foam, soft plastics and electronics. To address this gap the CRD launched the new What Goes Where tool, which replaced myrecyclopedia.ca.

The new tool offers a more detailed breakdown of materials categories and allows users to search a broader database of items. The tool also offers options to more clearly distinguish between reuse, recycling and garbage disposal options, helping residents make informed decisions.

What Goes Where was promoted through a media campaign and event outreach booths. The tool recorded 27,486 active users and 61,009 sessions between March and December 2025.



### Diversion Programs Funded or Administered by the CRD

CRD Program Diversion (tonnes)	2021	2022	2023	2024	2025
Hartland Diversion	17,525	16,642	18,924	31,135	50,374
Curbside Blue Box	18,613	17,293	17,438	16,716	16,637
Electoral Area Depots	915	929	907	978	992
Total tonnes diverted	37,053	34,864	37,269	48,829	68,003

# Challenges and Opportunities

As the management of unwanted materials is a shared responsibility, successful implementation of the SWMP will require involvement from the entire community, including residents, businesses, institutions, First Nations, municipalities and non-profit associations, as well as the local waste management industry. Each of the stakeholders involved in solid waste management has a unique role to play, but there are many competing priorities.

## Solid Waste Roles and Responsibilities



The main policy levers the CRD has control of are limited to what is accepted at Hartland Landfill. In early 2024, after consultation with stakeholders, new material bans and tipping fee changes were implemented. Throughout 2024, clean wood, treated wood and asphalt shingles were banned from the general refuse stream, increased fine rates for non-compliance were established and the construction of the Material Diversion Transfer Station (MDTS) was completed.

Along with policy changes, the CRD has introduced the Waste Stream Collector Incentive Program to promote multi-stream waste collection (i.e., source separated organics, recyclables and general refuse) and incentivize voluntary self-reported collection data sharing. In 2025, 19 Hartland commercial customers, representing approximately 80% of Hartland’s total general refuse tonnages participated.

## Zero-Waste Event Grant

The Rethink Waste Grant was established to support waste reduction activities in the region. The Rethink Waste Community Grant has been active since 2022 and has supported local community projects which reduce waste and increase awareness across a variety of waste reduction topics.

Through engagement with past and prospective grant recipients and municipal partners, staff identified an opportunity to add to existing momentum in the community surrounding reducing waste generated at public events.

In May 2025, the Zero-Waste Event Grant was launched offering up to \$10,000 for event organizers to implement waste reduction strategies at their events. Funds could be used for activities such as collecting new waste streams, introducing reusable food ware, hiring an event waste manager or working with vendors to minimize waste generation at the event. Grant recipients were asked to submit a final report and provide data on waste stream types, volumes and diversion rate for each event.

In 2025, 15 event applications were approved and 12 completed their events and submitted final reports. Across the 12 completed events, organizers reported 6,013 kg of waste generated, with grant funds used to support the diversion of 89% (5,362 kg) of waste. In the end only 651kg of material was sent to the landfill across all 12 events. Additionally, the Zero-Waste Event Grant helped raise awareness and inform attendees about the importance of waste diversion. Across the 12 completed events, an estimated 77,400 attendees were reached through this initiative.

The Zero-Waste Event Grant has provided valuable insight on types and volumes of waste generated through public events as well as highlighted areas where further diversion could be possible. As the grant continues, organizers will be encouraged to introduce reusable food ware to further reduce the volume of materials generated, to increase education and awareness among event attendees to minimize contamination and to work with vendors to limit the types of materials brought into events to those that can be more responsibly managed.



User friendly waste sorting stations purchased with the Zero Waste Event Grant at last year's ArtistREE event to help divert recyclable materials from the landfill.

## Material Diversion Transfer Station

In 2025, the MDTS completed its first full year of operations with all source separation requirements in place. Source separated loads of clean wood, treated wood and asphalt shingles are brought to the MDTS for consolidation and processing before being sent to end markets for recycling or energy recovery. Throughout the year the MDTS processed over 27,300 tonnes of wood and asphalt shingles.

The MDTS has created opportunities beyond managing wood and asphalt shingles. In 2025, the processing of mattresses and yard and garden material were moved from off-site locations to the MDTS, reducing transportation costs and corresponding GHG emissions, and increasing operational efficiency. In May 2025, rigid plastics were collected at the public drop-off area for subsequent grinding at the MDTS for beneficial use on site. In 2026, the CRD will explore opportunities for additional materials to be diverted from the general refuse stream and processed through the MDTS.

## Blended Biosolids Disposal at Hartland Landfill

In 2025, the CRD did not landfill any Class A biosolids as general refuse at Hartland Landfill. In March 2025, ENV approved the CRD's Long-Term Biosolids Management Strategy which outlined the beneficial uses for Class A Biosolids. Under this strategy, options will be utilized under a prioritization structure. Tier 1 of the strategy is the development of an advanced thermal demonstration plant, while Tier 2 is the development of additional combustion and non-agricultural, out-of-region, land application options.

## Landfill Gas Collection

In 2025, landfill gas collection efficiency was calculated at 57% using the ENV model and 67% using the UBCi model, an increase compared to 43% (ENV) and 50% (UBCi) reported in 2024. Collection efficiency improvements are reflective of the completion of new well connections and infrastructure in early 2025.

## Beneficial Use

Beneficial use is the reutilization of materials in landfill operations which would have otherwise been considered waste. Approximately 2,006 tonnes of material was beneficially used on-site in place of virgin materials, as per ENV guidelines. This year a rigid plastics collection pilot was established in the public drop-off area, diverting items such as totes, laundry baskets, and lawn furniture. These items were ground to reduce their size and used as daily cover.



The Material Diversion Transfer Station was constructed at Hartland Landfill in 2024 to pre-process wood (treated and clean) and asphalt shingles for recycling or energy recovery. In 2025, over 27,300 tonnes of clean and treated wood and asphalt shingles were diverted from the general refuse stream and processed at the MDTS.



## Progress Summary

The following sections are intended to provide a high-level, easy-to-understand overview of the CRD’s progress related to implementing the SWMP and to summarize progress made in 2025 as it relates to the plan’s goals and focus areas.

### Goals

The four goals of the SWMP may be achieved within the timeframe of this plan, but a goal may also be aspirational, something for the CRD to strive for beyond the timeframe of this plan. Measures of success and progress status definitions for the goals were developed with the SWAC in 2023.

### Focus Areas

The focus areas form the basis of service plans and work plans that are approved by the Board annually as part of the financial planning process. Collaboration with First Nations governments, municipalities, other solid waste services, CRD divisions and stakeholders will be integral to this process. The 15 strategies and 72 actions contained within the SWMP are divided into three focus areas:

- Reduce and Reuse
- Recycling
- Recovery and Residuals Management

For more details on the SWMP’s 15 strategies, consult *Appendix A: SWMP Report Card*.



# 2025 Overall SWMP Progress

On track

## Goal Areas



**Goal 1:** To surpass the provincial per capita waste disposal target (350kg/capita/year) and aspire to achieve a disposal rate of 125 kg/capita/year.



**Goal 3:** To have informed citizens that participate effectively in proper waste management practices.



**Goal 2:** To extend the life of Hartland Landfill to the year 2100 and beyond.



**Goal 4:** To ensure that the CRD's solid waste services are financially sustainable.

## Focus Areas



**Reduce and Reuse**



**Recovery and Residuals Management**



**Recycling**

### Focus Area Icon Legend



**On Track:** 75% or greater of yearly target progress



**Opportunity for Improvement:** 50%-75% of yearly target progress



**Attention Required:** less than 50% of yearly target progress



**Future Action**

### Goal Area Icon Legend



**On Track**



**Opportunity for Improvement**



**Attention Required**

Developed in collaboration with the SWAC, each goal has a unique definition for "On Track", "Opportunity for Improvement" and "Attention Required." Review the following section for definitions.

## Goal One:

To surpass the provincial per capita waste disposal target (350kg/capita/year) and aspire to achieve a disposal rate of 125 kg/capita/year.



On Track

### Indicators and Inputs Summary:

- Calculated a disposal rate of 330 kg/capita, a decrease of 17.42% or 70 kg/capita from when the plan began in 2021 and a decrease of 8 kg/capita or 2.26% compared to 2024.
- In 2025, the MDTS completed its first full year of operations with all source separation requirements in place. The MDTS diverted over 27,300 tonnes of wood and asphalt shingles from the general refuse stream.
- 2022 Solid Waste Stream Composition study indicated 47% of the garbage sent to Hartland Landfill could have been potentially diverted through reuse, recycling or energy recovery.
- In 2026, the CRD will complete waste generator and waste composition studies to further analyze where and how waste is generated at the source and what is being landfilled.

### Icon Definitions



Community is trending towards a per capita disposal rate to be **less than 350 kg/capita** over the life of the plan.



Community is trending towards a per capita disposal rate of **350 kg/capita** over the life of the plan.



Community is trending towards a per capita disposal rate **above 350 kg/capita** over the life of the plan.

## Goal Two:

To extend the life of Hartland Landfill to the year 2100 and beyond.



Opportunity for Improvement

### Indicators and Inputs Summary:

- Calculated a five-year average (2021-2025) Airspace Utilization Factor (AUF) of 0.67 tonnes of material per cubic meter of airspace, missing the target of 0.76 tonnes of material per cubic meter by 11.8%. AUF is the total volume of general refuse, controlled waste and cover material landfilled.
- Landfilled 150,441 tonnes of general refuse at Hartland Landfill, a decrease of 22,445 tonnes (13%) from when the plan began in 2021.

### Icon Definitions



Air space utilization is on track to extend the life of Hartland Landfill to the year **2100 and beyond**.



Air space utilization is only trending to extend the life of Hartland Landfill to the year **2100**.



Air space utilization will not extend the life of Hartland Landfill to the year **2100**.

### Goal Three:

To have informed citizens that participate effectively in proper waste management practices.



On Track

#### Indicators and Inputs Summary:

- Launched the new What Goes Where tool in March 2025. The new tool was accessed by 27,486 unique users and recorded 61,009 sessions.
- Provided \$457,963 in funding for non-profit waste reduction organizations, organics diversion education and the Rethink Waste Grant, a 126% increase from when the plan began in 2021.
- Delivered 301 waste reduction workshops and tours (landfill tours, 3Rs, composting) to 6,732 children and adults in the capital region, a 11.9% increase compared to 2024.
- Launched a new Zero-Waste Events Grant which supported 12 public events to divert approximately 89% of all waste generated at the events. The grant and implemented waste reduction activities promoted awareness of zero-waste practices to approximately 77,400 event attendees.
- Evaluated the expanded hours pilot at Hartland and made those hours permanent based on visitor feedback and usage. During the pilot, the total number of vehicles accessing the site increased, with 56% of the visits occurring during the pilot hours, on Saturdays between 2 pm and 5 pm.
- In the 2024 Solid Waste Market Research and Engagement Study, 74% of residents reported positive attitudes across five waste management behaviours, including reducing waste, supporting circular economy, composting, confidence in their waste disposal knowledge and supporting community initiatives.

#### Icon Definitions



Engagement and participation in proper waste management practices is **higher** than previous years.



Engagement and participation in proper waste management practices is **equivalent** to previous years.



Engagement and participation in proper waste management practices is **less** than previous years.

### Goal Four:

To ensure that the CRD's solid waste service are financially sustainable.



Opportunity for Improvement

#### Indicators and Inputs Summary:

- Solid waste service continues to be self-funded but is now showing a small deficit.
- In 2026, diversion programs and tipping fees will be reviewed and optimized to better ensure future financial sustainability.

#### Icon Definitions



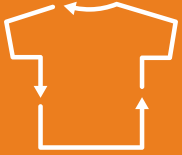
Solid waste service self-funding model is **financially sustainable** for the remainder of the plan.



Solid waste service self-funding model is **trending in the wrong direction**, adjustments may be necessary.



Solid waste service self-funding model is trending in the wrong direction and is currently **not sustainable** for the remainder of the plan.



## Reduce and Reuse

Governments, residents, non-profits and businesses all have an important role to play in reducing and diverting waste from the landfill. Reducing the amount of waste created, and finding ways to repurpose and reuse waste, eliminates the need to dispose of items later.



**Overall Status**  
**On Track**

### CRD Roles

- Municipal collaboration
- Provincial and Federal Government advocacy
- Funding and supporting non-profits
- Education and outreach

**This focus area includes**

# 6

**SWMP strategies**

### Progress Summary

- Launched the new What Goes Where tool to help residents search a database for disposal and recycling options, replacing myrecyclopedia.ca. The tool recorded 27,486 active users, 61,009 sessions from March to December.
- Between the Hartland Landfill Public Tours, Hartland Landfill Technical Tours, 3Rs K-12 program, and attending community events, the CRD connected with 4,935 residents.
- The CRD Rethink Waste Grant provided funding to 29 community-based and 12 zero-waste event projects totaling \$168,223.
- Continued to provide support (\$140,267) for 8 eight local non-profit reuse organizations to assist them in managing unusable donations and partnered with five non-profit reuse organizations for the redistribution of 37 tonnes of usable textiles and bicycles collected at the Hartland Depot.



Transition Salt Spring  
Clothing Swap

Return-It  
**EXPRESS** & GO



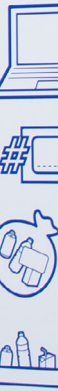
Return-It  
**EXPRESS** & GO



Return-It  
**EXPRESS** & GO

### Express System for Refundable Beverage Containers Only

- 1** To get started, sign up for your free account at [express.return-it.ca](http://express.return-it.ca)
- 2** At the label stand, log in and print your bag labels. Each bag needs a label and you can print extra labels for future drop offs.
- 3** Tag each bag, bring them to the Return-It Express & GO station, use your pin code to open the bag drop door and drop your bags in.
- 4** We'll sort and count your containers and refund the deposit to your online account.



### Accepted Refundable Beverage Containers



Return-It Express & Go station at Hartland Depot.



## Recycling

By participating in recycling programs, residents and businesses take responsibility for the products they've purchased, and support a system where these materials can be used repeatedly.



**Overall Status**  
**On Track**

### CRD Roles

Hartland Depot

Landfill bans

Provincial and Federal  
Government advocacy

Curbside recycling contract

Recycling in Electoral Areas

Education and outreach

**This focus  
area includes**

# 7

**SWMP strategies**

### Progress Summary

- Refined operation of Material Diversion Transfer Station (MDTS) and implementation of source separation requirements for clean and treated wood and asphalt shingles. The MDTS diverted over 27,300 tonnes from the general refuse stream.
- Provided funding to the City of Victoria to trial different depot collection methods for non-curbside recyclables. The Beyond the Curb program operated from May – December and collected 380 supersacks or 10.8 tonnes of materials from 5,000 users.
- Continued the MFD Sign Project by hiring two outreach assistants to conduct site visits and offer advice, signage and resources on best practices and setup for the waste collection area. In the end, 48 buildings totaling 2,797 units across seven municipalities participated and the project will continue in 2026.
- Registered 19 Hartland commercial customers, hauling approximately 80% of Hartland's total general refuse tonnages, for participation in the WSCI program which offers a \$15/tonne rebate on general refuse for commercial customers who provide multi-stream collection services and submit waste collection data.
- Continued renewal and delivery of Port Renfrew's local solid waste depot, including several site upgrades and a focus on improving operational efficiency.
- New contractor began service for the hauling and processing of kitchen scraps.



Wood recycling at  
Hartland Depot

Linde  
Making our world  
more productive



Waga Energy Biogas facility opening day at Hartland Landfill. The facility turns landfill biogas into Renewable Natural Gas (RNG).



## Recovery and Residuals Management

Once material has been reduced and technology has been applied to recover as much energy as possible, residuals management provides a safe and effective way to manage materials that don't have a next and best use.



**Overall Status**  
Opportunity for Improvement

### CRD Roles

Landfill bans and enforcement

Hartland Landfill

Technology research

Landfill Gas Management

This focus area includes

# 2

SWMP strategies

### Progress Summary

- Calculated a disposal rate of 330 kg/capita, a decrease of 2.26% or 8 kg/capita from 2024.
- On January 1, 2025 Hartland Landfill's general refuse tipping fee increased from \$150 to \$155/tonne.
- Completed a full year of operations of the Material Diversion Transfer Station (MDTS) at Hartland Landfill. The MDTS processes wood (clean and treated) and asphalt shingles for reuse, recycling or energy recovery.
- Moved commercial traffic site access to the new north entrance and scales.
- Began collecting source separated rigid plastics for processing at the MDTS and beneficial use on site.
- Continued with on site beneficial use opportunities with 2,006 tonnes of select waste material streams processed and utilized onsite in place of virgin material, as per the ENV guidelines.
- Issued 576 tickets and 22 warnings primarily related to banned materials in general refuse.
- Began filling of Cell 4, completed construction of Cell 5a and began planning for future landfilling area (Cell 5b), which will secure approximately 25 more years of landfill space.
- Achieved a gas collection efficiency of 57% based on the ENV model, and a 67% gas collection efficiency based on the UBCi model in 2025.



## Looking Ahead - 2026

The CRD will continue to demonstrate its leadership by supporting local, municipal, and federal waste diversion efforts, and continue to move waste up the 5R Pollution Prevention Hierarchy to its next and best use.

Some activities planned for 2026 include:

**Hartland Landfill 2050+:** An options analysis of potential future waste disposal options will be completed in preparation of the development and consultation surrounding CRD next Solid Waste Management Plan.

**Waste Generator Study:** This study will gain insight into the patterns of waste generation at the source; provide a deeper understanding of the waste stream composition; and identify opportunities for waste reduction, recycling and/or proper disposal across the capital region.

**Waste Stream Composition Study:** A study will be completed in 2026 to assess the composition of waste being landfilled at Hartland. Results will be compared to the 2022 study and used to assess effectiveness of policies and programs introduced after the last study.

**Depot Strategy:** The CRD will regionalize/scale up the Beyond the Curb depot program that was piloted in the City of Victoria in 2025. The program will offer free recycling drop-off at community markets and hub spaces throughout the region for non-curb-side materials, including flexible plastic and foam packaging.

**Waste Flow Management Investigation:** A full-time staff member was hired to explore how the CRD can feasibly implement waste flow management and develop policy to promote source separation and increase the diversion of recyclable materials, as well as prevent disposal of out-of-region MSW at Hartland Landfill.

**Disaster Debris Management Planning:** The CRD will develop a Regional Disaster Debris Framework outlining strategies and procedures for managing debris after a disaster, as well as a Common-use Disaster Debris Management Plan to be made available to other local governments for adoption.

**Monitor New Policies to Divert Waste from Hartland Landfill:** Changes to the Hartland Landfill Tipping Fee and Regulation Bylaw No. 3881 and Ticket Information Authorization Bylaw No. 1857 came into effect in two phases in 2024. Staff will monitor the impact of changes and investigate additional policies to promote continued diversion.



Battery recycling at the Hartland Public Drop off Depot.

## Appendix A: Solid Waste Management Plan Report Card

The SWMP Report Card is intended to provide a high-level, easy-to-understand overview of the CRD's progress related to implementing the SWMP and to summarize progress made in 2025.

### Methodology

The SWMP identifies specific strategies and actions to guide the CRD's efforts over the lifespan of the Plan. Over the lifetime of the SWMP, the strategies and actions contained within will form the basis of service plans and work plans that are approved by the Board annually as part of the financial planning process. Collaboration with First Nations governments, municipalities, other solid waste services, CRD divisions and stakeholders will be integral to this process.

These include 15 strategies with 72 actions and associated timelines divided into the following three focus areas:

- Reduce and Reuse
- Recycling
- Recovery and Residuals Management



## 2025 Overall SWMP Progress

On track

The 15 strategies with 72 actions contained within the SWMP are divided into three focus areas. Scores are based on the current status of each strategy with their focus area.

### Focus Areas



Reduce and Reuse



Recycling



Recovery and Residuals Management

### Focus Area Icon Legend



**On Track:** 75% or greater of yearly target progress



**Opportunity for Improvement:** 50%-75% of yearly target progress



**Attention Required:** less than 50% of yearly target progress



**Future Action**

Status Strategy Update

#### Progress on Strategies



1 **Continue and enhance education programs**

- Launched the new What Goes Where tool to help residents search for diversion and disposal options, replacing myrecyclopedia.ca. The tool recorded 27,486 active users, 61,009 sessions and an engagement rate of 65.72%
- Developed and circulated 5 issues of the CRD Rethink Waste Newsletters to 673 subscribers
- Responded to 20,972 Infoline inquiries via phone and email
- Delivered 109 3R programs to 2,300 students, and 2 Earth Day 3R programs to 630 participants
- Sent 3 CRD Educators Newsletters to 917 subscribers
- Delivered a teacher professional development workshop for 16 teachers who will continue education with their 320 students
- Launched The Loop Lab, a new circular economy workshop for grade 9-12 students
- Delivered 9 public landfill tours to 226 participants; 20 community group tours and workshops to 434 residents and 10 technical landfill tours to 200 industry partners
- The CEC delivered 62 composting and waste reduction-related workshops to 1,052 adults and 194 composting and waste reduction-related workshops to 3,652 children and youth.
- The CEC also delivered four business workshops to 23 adult participants.
- Conducted 4 solid waste public education campaigns, including advertorials, YouTube pre-roll, social media campaigns, digital advertising, print advertising and bus advertising
- Employed targeted social media campaigns to promote solid waste programs and initiatives, reaching 594,265 people across CRD platforms and generating 843,647 content views
- Increased social media outputs from 70 in 2024 to 127 in 2025 fostering regular and consistent engagement
- Created a new Hartland Landfill educational tour video for classes that are not able to visit the site
- Offered new educational resources for schools including, a how to do a classroom waste audit and multiple tools to support teachers, families and administrative staff implement zero waste lunch programs
- CRD staff participated in 18 outreach booths with solid waste messaging including Love Food Hate Waste, household hazardous waste and What Goes Where. Staff engaged with 1,689 visitors at the booths
- CEC staff attended 44 community events on behalf of the CRD to promote at home composting and organics diversion
- Debuted a new engagement tool, What Goes Where bean bag toss, at community events booths to increase engagement and promote the new What Goes Where tool
- Received 4,510 new RecycleCRD app installs and recorded 6,888 Ready, Set, Sort! game plays by residents
- Added 15,580 residents to receive reminders and alerts via RecycleCRD app, email, voicemail and mobile calendar for the Curbside Recycling Program
- Continued participation in Coast Waste Management Association communications/educators working group
- Continued sponsorship of Ecostar awards
- The City of Victoria implemented their Reuseable Cup campaign for a second year in October 2025 which prevented 1,027 single-use cups from being used
- The City of Victoria launched a reusable cup and container pilot at Save-On-Foods Memorial Centre, reducing the number of single-use items used on-site
- The District of Saanich shared waste-related information during their in-person Climate Plan Update engagement sessions.
- The Saanich Sustainability division hosted educational booths at public events throughout the year, promoting waste reduction, reuse, and proper sorting.
- The District of Saanich ran social media campaigns emphasizing waste reduction and reuse, including seasonal tips.



### Reduce and Reuse

Reducing the amount of waste created and finding ways to repurpose and reuse waste, eliminates the need to dispose of items later.



### Overall Focus Area Status

On track



## Reduce and Reuse

Reducing the amount of waste created and finding ways to repurpose and reuse waste, eliminates the need to dispose of items later.



**Overall Focus Area Status**  
On track

Status	Strategy	Update
<b>Progress on Strategies</b>		
	<b>2 Encourage waste prevention</b>	<ul style="list-style-type: none"> <li>Continued to provide funding under the Rethink Waste Community Grant (RWCG) and supported 29 projects (\$96,172)</li> <li>Increased funding available for RWCG projects from \$3,000 to \$5,000 per project to ensure organizations have sufficient funding supports to complete waste reduction initiatives and to incent new projects that may have been limited by the funding amounts available.</li> <li>Introduced the Zero-Waste Event Grant which supported 12 events and resulted in 5,362kg waste diverted from the general refuse (\$72,051)</li> </ul>
	<b>3 Support reduction of avoidable food waste</b>	<ul style="list-style-type: none"> <li>Conducted a fall Love Food Hate Waste education campaign, which featured social media collaborations with local Food Security Distribution Centre, local print and digital media ads</li> <li>Continued partnership investment (\$22,000) with the national Love Food Hate Waste campaign for access to national resources and educational materials</li> <li>Provided \$98,083 in funding to the CEC to deliver waste diversion and composting programs to adults and children in the region.</li> <li>The City of Victoria hosted a Circular Economy Speaker Series Food Waste Event which moved 400 lbs of food up the pollution prevention hierarchy</li> </ul>
	<b>4 Support reuse activities in the region</b>	<ul style="list-style-type: none"> <li>Continued to provide support (\$140,267) for 8 local non-profit reuse organizations to assist them in managing unusable donations</li> <li>Collected 37 tonnes of reusable goods at Hartland Depot for redistribution by local non-profit reuse organizations</li> <li>Provided Light House with \$25,530 in funding to support their building material exchange program which connects construction and manufacturing businesses with surplus materials and materials for reuse</li> </ul>
	<b>5 Support local governments in working towards zero waste and a circular economy</b>	<ul style="list-style-type: none"> <li>Continued leading the Local Government Waste Reduction Working Group, 12 municipalities participated, 8 meetings held in 2025</li> <li>Continued work with WSÁNEĆ Leadership Council/ CRD Solid Waste Working Group</li> <li>Continued discussions with Pacheedaht First Nation on future, mutually beneficial long-term waste management for the broader Port Renfrew community</li> <li>CRD's elected representative participated in the Vancouver Island and Coastal Communities Committee's meetings.</li> <li>Developed a Model Demolition Waste and Deconstruction Bylaw to be made available to local governments</li> <li>The District of Saanich worked with The Diverters to operate waste-sorting booths at public events and festivals, improving material diversion and public education</li> <li>The District of Saanich piloted reusable food service ware at three public events, including using 5,000 stainless steel bowls for Strawberry Festival, preventing the use of approximately 4,000 single-use containers</li> <li>The District of Saanich sponsored 14 businesses to participate in the Synergy Circular Economy Accelerator Program</li> </ul>
	<b>6 Continue and enhance policy development</b>	<ul style="list-style-type: none"> <li>Amended Hartland Landfill Tipping Fee and Regulation Bylaw No. 3881 and Ticket Information Authorization Bylaw No. 1857 to make adjustments to the tipping fee structure and increased bylaw fines</li> <li>Registered 19 Hartland commercial customers, representing approximately 80% of Hartland's total general refuse tonnages, for the WSCI program which offers a \$15/tonne rebate on general refuse for commercial customers who provide multi-stream collection services and voluntary report waste collection data</li> <li>Continued renewal and delivery of Port Renfrew's local solid waste depot, including several site upgrades and a focus on improving operational efficiency.</li> <li>Secured a contractor and began Disaster Debris Management Planning in collaboration with the City of Victoria</li> <li>City of Victoria staff continue to attend Canadian Collaboration for Sustainable Procurement event and learning opportunities to improve understanding of sustainable procurement as it relates to waste reduction and climate action</li> <li>Hired a Solid Waste Analyst to begin work on investigating regulatory mechanisms to manage MSW in the region.</li> <li>Initiated and hosted Wildlife Attractant Working Group meetings to share options for local bylaws to address limiting bear attractants. Meetings were attended by representatives from 8 municipalities and 1 electoral area.</li> <li>The District of Saanich drafted and piloted a Sustainable Procurement Policy, including staff guidelines and a purchasing checklist.</li> </ul>



## Recycling

Reducing the amount of waste created and finding ways to repurpose and reuse waste, eliminates the need to dispose of items later.



### Overall Focus Area Status

On track

Status	Strategy	Update
<b>Progress on Strategies</b>		
	<b>7 Increase residential diversion</b>	<ul style="list-style-type: none"> <li>Partnered with Recycle BC for local collection of 18,428 tonnes of residential PPP through the Hartland Depot, the curbside single-family home recycling program and depot services for rural/island residents</li> <li>Completed the pilot of expanded Saturday hours at Hartland Landfill to increase accessibility and made expanded hours permanent</li> <li>Received 4,579 tonnes of recyclable material and 68 tonnes of orphan household hazardous waste at the Hartland Depot</li> <li>Continued to support the Southern Gulf Islands Recycling Coalition as they deliver waste reduction and diversion services for their communities</li> <li>Provided funding to the City of Victoria for the Beyond the Curb pilot program trialing new depot collection methods for non-curbside recyclables. The resulting Hub and Community Market depots had about 5,000 users and diverted over 10 tonnes of materials</li> <li>Investigated flexible plastics curbside collection options for single family homes</li> <li>Participated in monthly meetings with the South Island Sustainable Events Collective, a collective of private businesses/community members and local government aimed at coordinating event waste reduction efforts</li> <li>Staff began working with Pacheedaht First Nation to investigate the possibility of extending curbside recycling collection to the community under the next curbside collection contract</li> </ul>
	<b>8 Increase multi-family diversion</b>	<ul style="list-style-type: none"> <li>Implemented the MFD Sign Project, by hiring 2 outreach assistants to conduct site visits, offer advice, signage and resources on best practices and setup for the waste collection area; 48 buildings totalling 2,797 units across 7 municipalities participated</li> <li>Installed 570 signs in MFDs and provided over 2,797 education materials for residents living in MFDs, including sorting guides, move-in and move-out guides, Hartland Depot sorting guide, and the kitchen scraps guide to promote proper waste disposal</li> <li>Developed tools and guidelines for property managers outlining best practices for managing waste sorting areas and tips to increase diversion</li> <li>Funded the City of Victoria's Beyond the Curb non-curbside depot recycling program designed to increase access to recycling depots in high density residential locations</li> </ul>
	<b>9 Increase diversion from industrial, commercial and institutional facilities</b>	<ul style="list-style-type: none"> <li>Developed tools and guidelines for food and beverage businesses and developers outlining best practices for source separation and space and access for waste sorting areas</li> <li>Met with representatives from School Districts 61, 63 and 64 to discuss barriers, challenges and opportunities to increase waste diversion in schools</li> <li>Introduced a Zero-Waste Event Grant to support event organizers to implement waste reduction strategies at public events</li> <li>Developed a resource for local governments outlining several approaches to implement source separation and space and access requirements</li> </ul>
	<b>10 Support existing and new extended producer responsibility (EPR) programs</b>	<ul style="list-style-type: none"> <li>Continued to partner with 12 EPR stewards for local collection of 20,077 tonnes of provincially-regulated recyclables through the Hartland Depot, Gulf Islands and Port Renfrew Depot and the Curbside Blue Box Program</li> <li>Participated in the Major Appliance Recycling Roundtable's Local Government Advisory Committee</li> <li>Continued to engage in opportunities to refine the EPR system in BC by participating on the BC Product Stewardship Council and working with program stewards to support and enhance their services offered in the capital region</li> <li>Sent an advocacy letter to the Ministry of Environment &amp; Parks expressing objections to the decision to exclude mattresses from the forthcoming update to the Province's Recycling Regulation</li> </ul>
	<b>11 Increase organics diversion and processing capacity</b>	<ul style="list-style-type: none"> <li>Provided consolidation, transfer and processing services for 16,578 tonnes of kitchen scraps collected by municipalities and private service providers at Hartland Landfill</li> <li>Began working with a new contractor for hauling and processing of kitchen scraps from Hartland Landfill</li> <li>Opened a new Kitchen Scraps Transfer Station</li> <li>Provided transfer and processing services for 2,541 of yard and garden material received at Hartland Landfill</li> <li>Continued to support restoration activities by offering reduced tipping fees for safe disposal of source separated invasive species</li> <li>Staff participated in Environment and Climate Change Canada consultation on Source Separated Organics Variability Roundtable</li> <li>The District of Saanich managed 10,400 tonnes of organic material through their curbside organics program, 7,000 tonnes of yard and garden materials at the municipal yard, and approximately 300 truck loads of leaf material was turned into compost and mulch for reuse</li> <li>The District of Saanich waived cart exchange fees for residents for 12 months as a financial incentive to upsize their Organics carts at no charge</li> <li>The District of Saanich implemented a utilities fee structure that directs operating cost increases to garbage cart fees until organics cart fees reach 50% of garbage fees, incentivizing organics diversion from landfill.</li> </ul>



## Recycling

Reducing the amount of waste created and finding ways to repurpose and reuse waste, eliminates the need to dispose of items later.



### Overall Focus Area Status

On track

Status	Strategy	Update
<b>Progress on Strategies</b>		
	<b>12 Increase construction, renovation and demolition (CR&amp;D) material diversion</b>	<ul style="list-style-type: none"> <li>• Diverted about 789 tonnes of clean wood, 19,204 tonnes treated wood and 6,527 tonnes asphalt shingles for recycling and energy recovery</li> <li>• City of Victoria had 11 permits falling under the Demolition Waste and Deconstruction Bylaw, all were successful and salvaged over 72 tonnes of wood for reuse.</li> <li>• A CRD Model Demolition Bylaw was drafted and will be shared with municipalities to be adopted if they elect to do so</li> <li>• Introduced a \$1,000 fine for the improper disposal of asbestos and for bringing loads of materials in walking floor trailers that have not been properly source separated</li> <li>• Worked with CRD bylaw to refine acceptance/contamination limits for C&amp;D materials requiring source separation</li> <li>• Supported (through RWCG) Synergy Foundation to create and promote Green Trades Certification</li> </ul>
	<b>13 Encourage proper public space waste management activities</b>	<ul style="list-style-type: none"> <li>• Conducted an education campaign on abandoned waste, highlighting how residents and college students can dispose of unwanted items according to the 5R Pollution Prevention Hierarchy</li> <li>• Provided \$3,859.82 in funding to six projects through the Community Clean-up Program.</li> <li>• Staff provided the Pacheedaht First Nation with educational resources and suggestions on supports to help reduce bear-human interactions in their community due to the presence of attractants</li> <li>• Responded to 8 inquiries regarding illegal dumping activity in Electoral Areas</li> <li>• The City of Victoria launched a new Streetscape Recycling Program with Recycle BC in December 2025</li> <li>• The Township of Esquimalt launched a pilot program that placed new, larger waste bins at 12 high-traffic bus stops to reduce illegal dumping</li> <li>• The District of Saanich installed 40 new litter bins with restricted openings and signage highlighting the applicable bylaw and fines for dumping of household waste</li> </ul>



## Recovery and Residuals Management

Once material has been reduced, and technology has been applied to recover as much energy as possible, residuals management provides safe and effective ways to manage materials that don't have a next and best use.



**Overall Action Status**  
Opportunity for Improvement

Status	Strategy	Update
<b>Progress on Actions</b>		
	<b>14 Optimize landfill gas management</b>	<ul style="list-style-type: none"> <li>Achieved a gas collection efficiency of 57% (ENV model) 67% (UBCi model) in 2024</li> <li>The new Biogas Upgrading Facility was completed and the generation of RNG for use in FortisBC gas systems began</li> <li>Continued to implement strategies to improve gas collection and mitigate fugitive emissions</li> <li>Continued annual installation of landfill gas collection infrastructure</li> </ul>
	<b>15 Enhance Hartland disposal capacity</b>	<ul style="list-style-type: none"> <li>Calculated a disposal rate of 330 kg/capita, a decrease of 2.26% or 8 kg/capita from 2024</li> <li>Increased Hartland Landfill's general refuse tipping fee from \$150 to \$155/tonne, beginning January 1, 2025</li> <li>Increased tipping fees for controlled waste and asbestos from \$157/tonne to \$214/tonne, beginning January 2025</li> <li>Operated the Material Diversion Transfer Station at Hartland Landfill effectively diverting of approximately 27,300 tonnes wood (clean and treated) and asphalt shingles</li> <li>Began deconstructing mattresses at the MDTs rather than off-site to decrease GHG generation and increase operational efficiency</li> <li>Began a pilot project for diverting rigid plastics for processing and beneficial use at Hartland</li> <li>Continued with onsite beneficial use opportunities with 2,006 tonnes of select waste material streams processed and utilized onsite in place of virgin material, as per the ENV guidelines</li> <li>Calculated a 5-year average AUF of 0.67 tonnes of material per m3 of airspace</li> <li>Newly constructed Cell 4 began receiving garbage in January 2025</li> <li>Cell 5a construction was complete and planning for construction of Cell 5b began</li> <li>The Long-Term Biosolids Management Strategy received endorsement from the Ministry of Environment and Parks in March 2025 and identifies priorities and actions including a demonstration plant, expanded combustion options, and non-agricultural, out-of-region land application</li> <li>Received 20,540 tonnes of controlled waste and 2,761 tonnes of asbestos containing material</li> <li>Issued 576 tickets and 22 warnings, related to several offences, including recyclable materials being found commingled in the garbage; failure to follow site Regulations, and deposition of hazardous materials etc.</li> </ul>



Capital Regional District

625 Fisgard Street  
Victoria, BC V8W 2S6  
250.360.3000

[www.crd.ca](http://www.crd.ca)  
Facebook: Capital Regional District  
Instagram: @crd\_bc