

## CAPITAL REGIONAL DISTRICT - INFRASTRUCTURE & WATER SERVICES

### Water Watch for April 26, 2026

#### Water Supply System Summary:

##### 1. Useable Volume in Storage:

Reservoir	April 30 5 Year Ave		April 30/25		April 26/26		% Existing Full Storage
	ML	MIG	ML	MIG	ML	MIG	
Sooke	91,843	20,206	91,279	20,081	91,646	20,162	98.8%
Goldstream	9,668	2,127	9,824	2,161	9,905	2,179	99.9%
Total	101,511	22,332	101,103	22,243	101,551	22,341	98.9%

##### 2. Average Daily Demand:

For the month of April	116.2 MLD	25.6 MIGD
For week ending April 26, 2026	127.3 MLD	28.0 MIGD
Max. day April 2026, to date:	139.9 MLD	30.8 MIGD

##### 3. Average 5 Year Daily Demand for April

Average (2021 - 2025)	116.9 MLD <sup>1</sup>	25.7 MIGD <sup>2</sup>
-----------------------	------------------------	------------------------

<sup>1</sup>MLD = Million Litres Per Day      <sup>2</sup>MIGD = Million Imperial Gallons Per Day

##### 4. Rainfall April:

Average (1914 - 2025):	89.1 mm
Actual Rainfall to Date	48.3 mm (54% of monthly average)

##### 5. Rainfall: Sep 1- Apr 26

Average (1914 - 2025):	1,488.3 mm
2025/2026	1,583.4 mm (106% of average)

##### 6. Water Conservation Required Action:

Spring is a great time to check for leaks in your home and yard.

A leaky toilet can waste 20 - 40 litres of water per hour.

Learn how to find and fix leaks on our website at:

<https://www.crd.ca/environment/water-conservation/conserving-water-home/fix-leak>

For general information regarding water conservation, visit the CRD webpage linked below:

CRD Water Conservation Homepage: <https://www.crd.ca/environment/water-conservation>

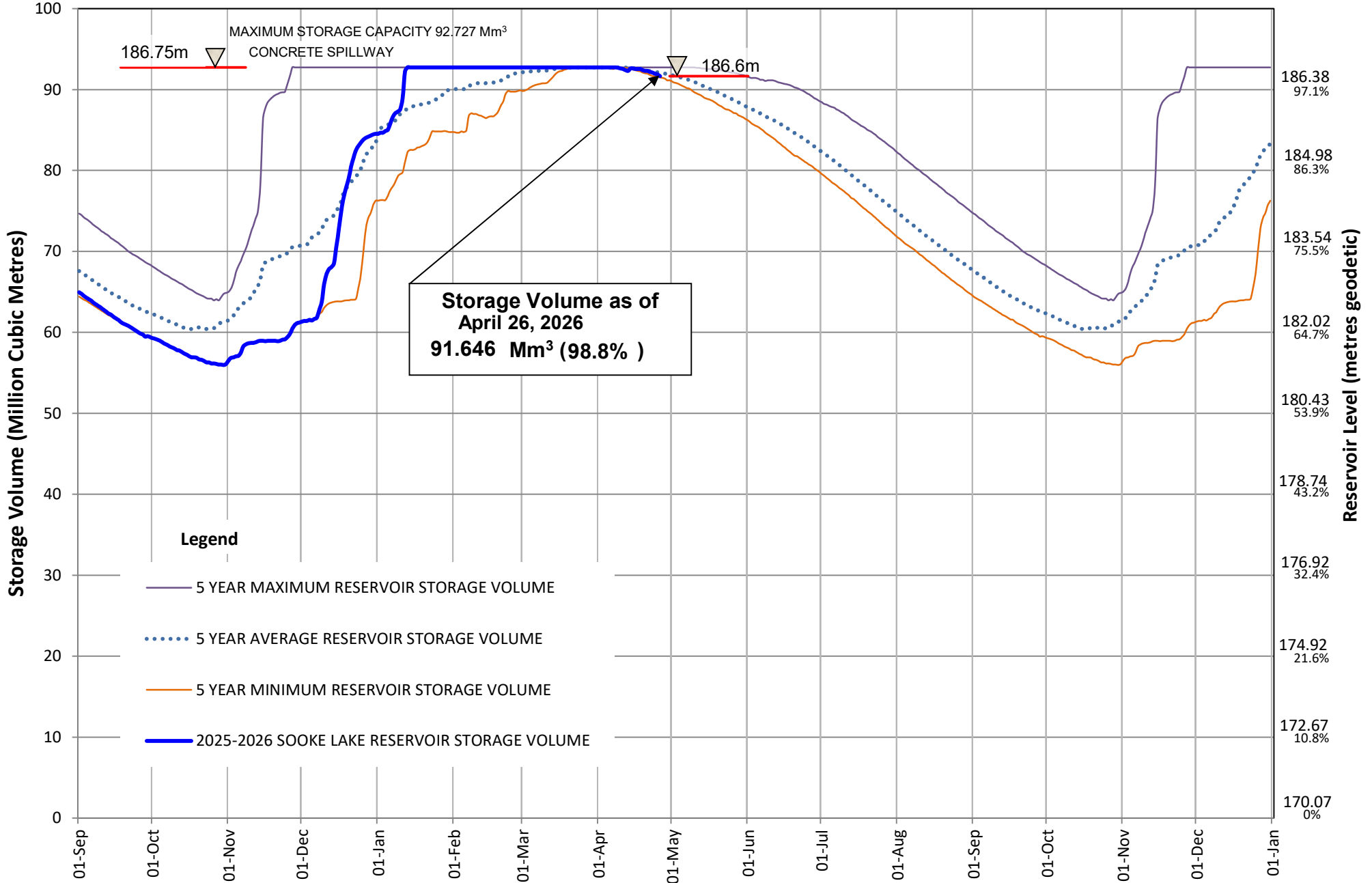
If you require further information, please contact:

Alicia Fraser, P. Eng.  
General Manager, CRD - Infrastructure and Water Services  
or  
Glenn Harris, Ph D., RPBio  
Senior Manager - Environmental Protection

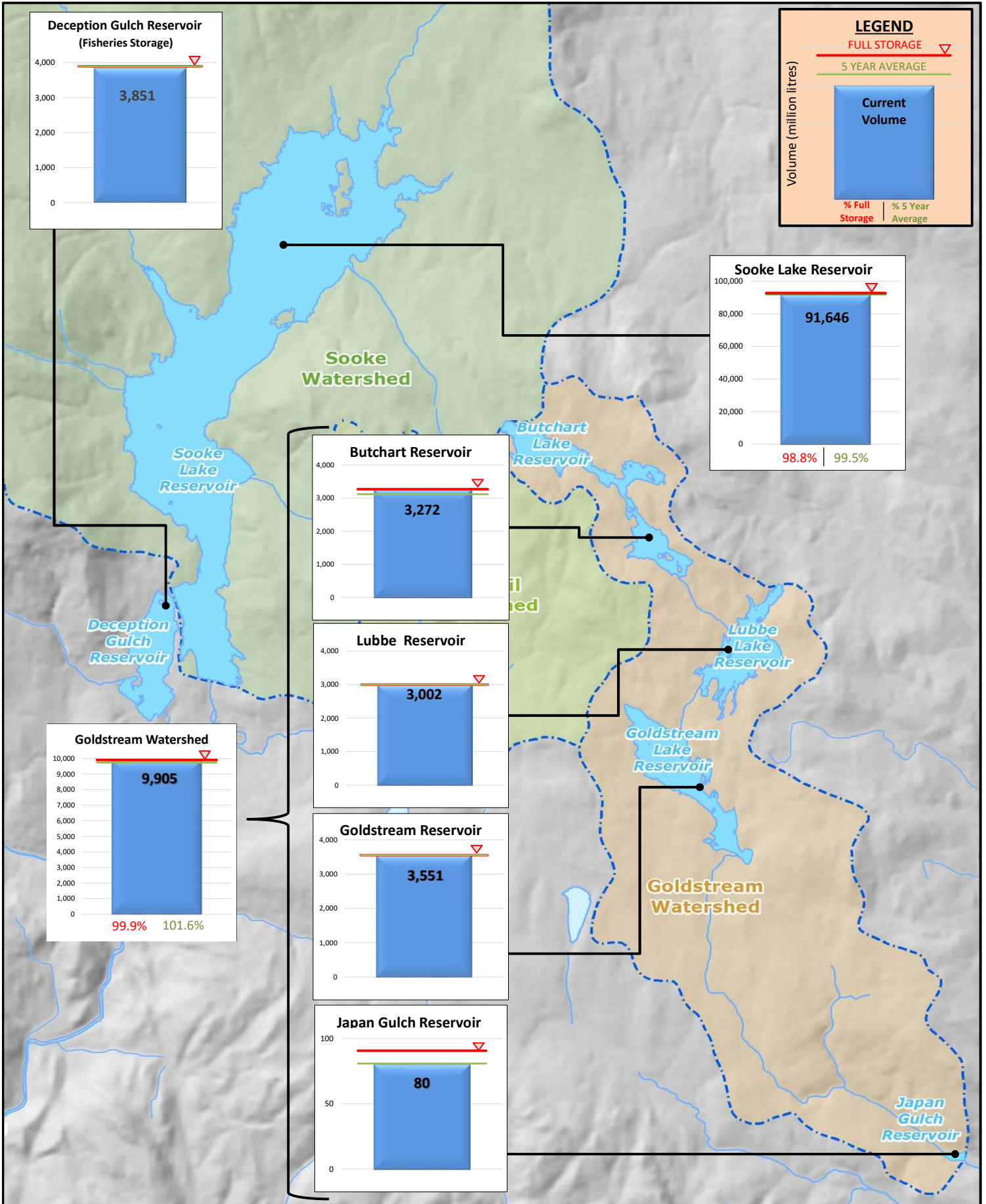
CRD Infrastructure & Water Services  
479 Island Highway  
Victoria, BC V9B 1H7  
(250) 474-9600

# SOOKE LAKE RESERVOIR STORAGE SUMMARY

## 2025 / 2026

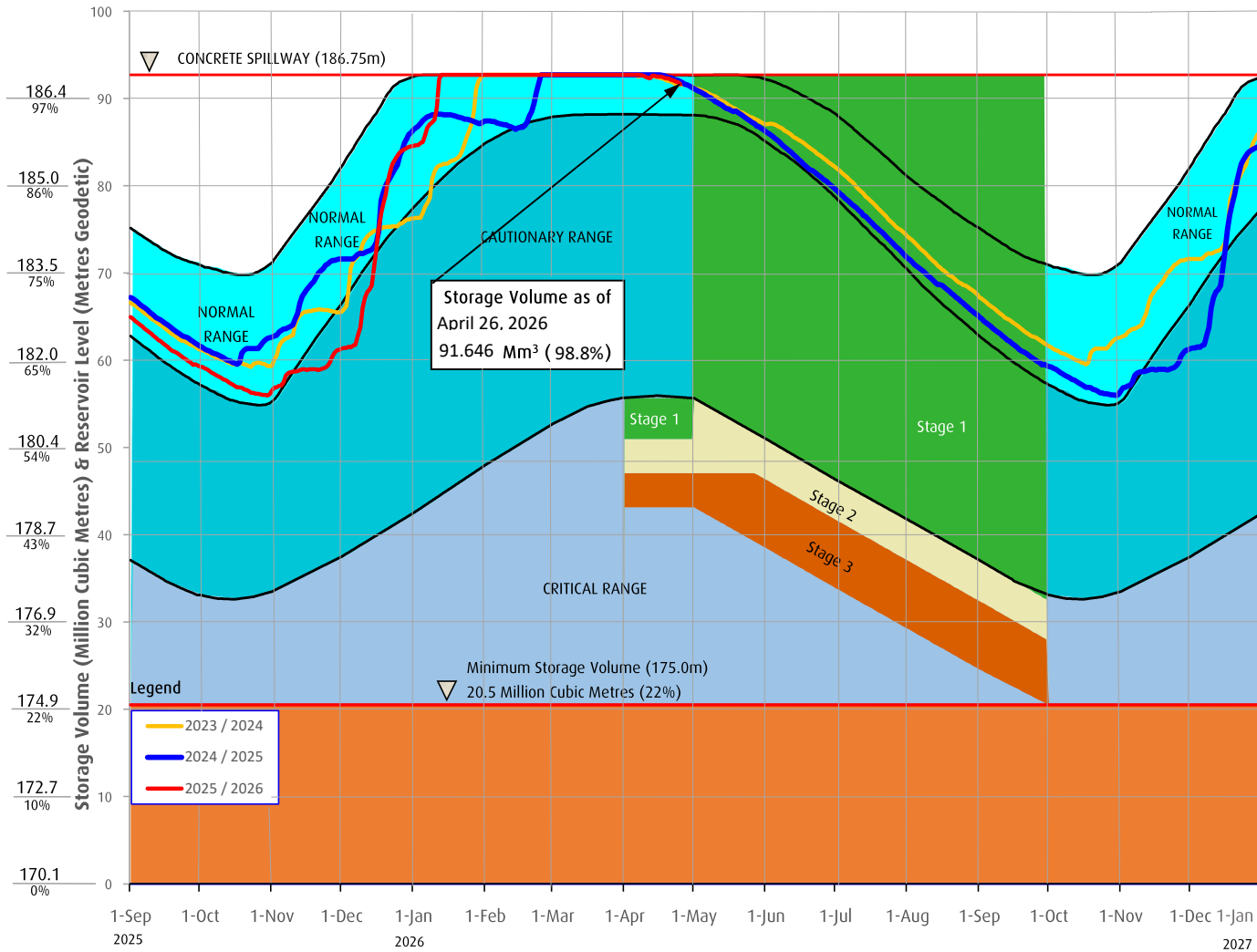


# Useable Reservoir Volumes in Storage for April 26, 2026



# Sooke Lake Reservoir Storage Level

## Water Supply Management Plan



## FAQs

How are water restriction stages determined?

Several factors are considered when determining water use restriction stages, including,

1. Time of year and typical seasonal water demand trends;
2. Precipitation and temperature conditions and forecasts;
3. Storage levels and storage volumes of water reservoirs (Sooke Lake Reservoir and the Goldstream Reservoirs) and draw down rates;
4. Stream flows and inflows into Sooke Lake Reservoir;
5. Water usage, recent consumption and trends; and customer compliance with restriction;
6. Water supply system performance.

The Regional Water Supply Commission will consider the above factors in making a determination to implement stage 2 or 3 restrictions, under the Water Conservation Bylaw.

At any time of the year and regardless of the water use restriction storage, customers are encouraged to limit discretionary water use in order to maximize the amount of water in the Regional Water Supply System Reservoirs available for nondiscretionary potable water use.

Stage 1 is normally initiated every year from May 1 to September 30 to manage outdoor use during the summer months. During this time, lawn watering is permitted twice a week at different times for even and odd numbered addresses.

Stage 2 is initiated when it is determined that there is an acute water supply shortage. During this time, lawn water is permitted once a week at different times for even and odd numbered addresses.

Stage 3 is initiated when it is determined that there is a severe water supply shortage. During this time, lawn watering is not permitted. Other outdoor water use activities are restricted as well.

For more information, visit [www.crd.bc.ca/drinkingwater](http://www.crd.bc.ca/drinkingwater)