

## Notice of Meeting and Meeting Agenda Environmental Services Committee

---

Wednesday, May 20, 2026

9:30 AM

6th Floor Boardroom  
625 Fisgard St.  
Victoria, BC V8W 1R7

---

B. Desjardins (Chair), S. Tobias (Vice Chair), J. Brownoff, J. Caradonna, G. Holman,  
D. Kobayashi, C. Plant, M. Tait, D. Thompson, A. Wickheim, C. McNeil-Smith (Board Chair, ex-officio)

The Capital Regional District strives to be a place where inclusion is paramount and all people are treated with dignity. We pledge to make our meetings a place where all feel welcome and respected.

### 1. Territorial Acknowledgement

### 2. Approval of Agenda

### 3. Adoption of Minutes

#### 3.1. [26-0508](#) Minutes of the Environmental Services Committee meeting of April 15, 2026

**Recommendation:** That the minutes of the Environmental Services Committee meeting of April 15, 2026 be adopted as circulated.

**Attachments:** [Minutes: April 15, 2026](#)

### 4. Chair's Remarks

### 5. Presentations/Delegations

*The public are welcome to attend CRD meetings in-person.*

*Delegations will have the option to participate electronically. Please complete the online application at [www.crd.ca/address](http://www.crd.ca/address) no later than 4:30 pm two days before the meeting and staff will respond with details.*

*Alternatively, you may email your comments on an agenda item to the CRD Board at [crdboard@crd.bc.ca](mailto:crdboard@crd.bc.ca).*

### 6. Committee Business

**6.1.      [26-0461](#)      Recycling in Schools - Opportunities for Diversion**

**Recommendation:** The Environmental Services Committee recommends to the Capital Regional District Board:  
That staff offer the recycling program supports outlined in Appendix B to all school districts operating in the capital region.

**Attachments:**      [Staff Report: Recycling in Schools – Opportunities for Diversion](#)  
                          [Appendix A: Letter to School Districts – September 2025](#)  
                          [Appendix B: SWMP – Proposed Actions to Support for School Districts](#)

**6.2.      [26-0462](#)      Beyond the Curb - Drop-off Recycling Program for Non-curbside Materials**

**Recommendation:** There is no recommendation. This report is for information only.

**Attachments:**      [Staff Report: Beyond the Curb-Drop-Off Recycling Pgm.](#)

**6.3.      [26-0464](#)      Previous Minutes of Other CRD Committees and Commissions for Information**

**Recommendation:** There is no recommendation. The following minutes are for information only.  
a) Solid Waste Advisory Committee - January 9, 2026

**Attachments:**      [Minutes: Solid Waste Advisory Committee \(January 9, 2026\)](#)

**7. Notice(s) of Motion****7.1.      [26-0579](#)      Motion with Notice: Community Energy Association Support (Director Thompson)**

**Recommendation:** [At the May 13, 2026 CRD Board meeting, the following Notice of Motion was read into the record by Director Thompson and referred by the CRD Chair to the next meeting of the Environmental Services Committee for discussion.]

The Environmental Services Committee recommends to the Capital Regional District Board:  
That the Capital Regional District provide \$15,750 to the Community Energy Association to act as a secretariat and support priority initiatives of the Vancouver Island and Coastal Communities Climate Leadership Steering Committee through 2026.

**8. New Business****9. Adjournment**

The next meeting is June 17.

## Meeting Minutes

### Environmental Services Committee

---

Wednesday, April 15, 2026

9:30 AM

6th Floor Boardroom  
625 Fisgard St.  
Victoria, BC V8W 1R7

---

#### PRESENT

Directors: B. Desjardins (Chair), S. Tobias (Vice Chair) (EP), J. Brownoff (EP), J. Caradonna, G. Holman (EP), D. Kobayashi (EP), C. Plant, D. Thompson, C. McNeil-Smith (Board Chair, ex-officio)

Staff: T. Robbins, Chief Administrative Officer; L. Jones, General Manager, Parks, Recreation and Environmental Services; K. Morley, Corporate Officer/General Manager, Corporate Services; G. Harris, Senior Manager, Environmental Protection; A. Orr, Senior Manager, Corporate Communications; R. Tooke, Senior Manager, Environmental Innovation; P. Enright, Manager, Climate Action, Environmental Innovation; M. Tromp Hoover, Manager, Environmental Resources Management Policy and Planning; M. Miklea, Deputy Corporate Officer/Manager, Legislative Services; J. Dorman, Committee Clerk (Recorder)

EP - Electronic Participation

Regrets: Director(s) M. Tait, A. Wickheim,

The meeting was called to order at 9:30 am.

#### 1. Territorial Acknowledgement

Chair Desjardins provided a Territorial Acknowledgement.

#### 2. Approval of Agenda

**MOVED** by Director Thompson, **SECONDED** by Director Plant,  
That the agenda for the Environmental Services Committee meeting of April 15,  
2026 be approved.  
**CARRIED**

#### 3. Adoption of Minutes

3.1. [26-0427](#) Minutes of the Environmental Services Committee meeting of February 18,  
2026

**MOVED** by Director Caradonna, **SECONDED** by Director Plant,  
That the minutes of the Environmental Services Committee meeting of February  
18, 2026 be adopted as circulated.  
**CARRIED**

#### 4. Chair's Remarks

Chair Desjardins recognized that it was the start of Earth Week and the theme for this year's Earth Day focuses on renewable energy, conscious consumption and the collective power of communities, families and individuals on creating environmental progress.

#### 5. Presentations/Delegations

##### 5.1. Presentations

There were no presentations.

##### 5.2. Delegations

**5.2.1. [26-0448](#)** Delegation - Jeff Miller; Resident of View Royal: Re: Agenda Item 6.1 Wrap-Up Activities of the Wildlife Attractants Working Group

J. Miller spoke to Item 6.1.

**5.2.2. [26-0453](#)** Delegation - Mollie Cameron; Representing Wild Wise Society: Re: Agenda Item 6.1. Wrap-Up Activities of the Wildlife Attractants Working Group

**MOVED by Director Plant, SECONDED by Director McNeil-Smith,  
That a late delegation, M. Cameron, Wild Wise Society, be permitted to speak on  
agenda Item 6.1.**

**CARRIED**

M. Cameron spoke to Item 6.1.

#### 6. Committee Business

**6.1. [26-0342](#)** Wrap-Up Activities of the Wildlife Attractants Working Group

L. Jones and M. Tromp-Hoover presented Item 6.1. for information.

Discussion ensued on the following:

- limited jurisdiction, governing and service authority bylaws
- provincial model bylaws and examples
- collection services in municipal versus electoral areas

**MOVED by Director Plant, SECONDED by Director Caradonna,  
That the agenda item be referred to the Electoral Areas Committee to provide  
their direction and comments.**

**CARRIED**

- 6.2. [26-0275](#) Bylaw No. 4765 - Exemption of Salt Spring Island Composting Facility from Bylaw No. 2736 - A Bylaw to Regulate the Operations of Composting Facilities in the Capital Regional District

M. Tromp Hoover spoke to Item 6.2.

**MOVED** by Director Holman, **SECONDED** by Director Caradonna,  
The Environmental Services Committee recommends to the Capital Regional District Board that:

1. That Bylaw No. 4765, "Capital Regional District Composting Facilities Regulation Bylaw No. 1, Amendment Bylaw No. 1, 2026", be read a first, second and third time;
  2. That staff conduct an online consultation on the exemption of the Salt Spring Island Composting Facility from the application of Bylaw No. 2736 for a minimum of one month;
  3. That, pending the outcome of this consultation process, staff refer Bylaw No. 4765 to the Minister of Environment and Parks for written approval; and
  4. That staff incorporate a repeal of Bylaw No. 2736 into the CRD's next Solid Waste Management Plan that is scheduled to be updated by 2030, including a public engagement process, and, subject to the completion of these tasks, prepare a bylaw for the CRD Board's approval to repeal Bylaw No. 2736.
- CARRIED**

- 6.3. [26-0372](#) Solid Waste Management Plan - 2025 Progress Report

L. Jones and M. Tromp Hoover presented Item 6.3. for information.

Discussion ensued on the following:

- composition study outlining construction, demolition and deconstruction waste
- per capita waste goals and achievements
- downturn in economic development and construction
- fee impediments, increases and illegal dumping
- thermal conversion plant, biosolids and biochar
- pink box trial program and progress update
- composition studies and associated costs
- multi-family, residential and commercial recycling programs

**6.4.**     [26-0373](#)     Climate Action Strategy - 2025 Progress Report

L. Jones and R. Tooke presented Item 6.4. for information.

Discussion ensued on the following:

- climate action GHG reductions versus climate adaptation
- carbon sequestration estimations, land conservation and natural assets
- inventory processes, territorial emissions and geographical boundaries
- future strategies, adaptation, and long term plans
- variability in global climate change and fluctuations
- EV chargers and user metrics
- BC Hydro calculations, changes and methodologies
- emissions intensity and differentiation of carbon neutrality

**MOVED by Director Plant, SECONDED by Director Caradonna,  
That Director McNeil-Smith (Board Chair, ex-officio) serve as Acting Chair in the  
absence of the Chair for the Environmental Services Committee meeting on April  
15, 2026.**

**CARRIED**

**Director Plant left the meeting at 11:17 am.**

**Chair Desjardins left the meeting at 11:23 am.**

**Director McNeil-Smith assumed the chair at 11:23 am.**

**Director Brownoff left the meeting at 11:29 am.**

**6.5.**     [26-0371](#)     Board Advocacy for a New Invasive Species Legislative Framework

L. Jones spoke to Item 6.5.

**MOVED by Director Caradonna, SECONDED by Director Tobias,  
The Environmental Services Committee recommends to the Capital Regional  
District Board:  
That the CRD Board Chair write a letter to the Province of BC (Ministry of Forests)  
requesting a review and update to the existing invasive species management  
regulatory framework in BC, including a ban on the sale, barter, gifting and  
transport of priority invasive species in British Columbia.**

**CARRIED**

**7. Notice(s) of Motion**

There were no notice(s) of motion.

**8. New Business**

There was no new business.

**9. Adjournment**

**MOVED** by Director Caradonna, **SECONDED** by Director Thompson,  
That the Environmental Services Committee meeting of April 15, 2026 be  
adjourned at 11:53 am.

**CARRIED**

---

CHAIR

---

RECORDER

**REPORT TO ENVIRONMENTAL SERVICES COMMITTEE  
MEETING OF WEDNESDAY, MAY 20, 2026**

---

**SUBJECT**     **Recycling in Schools – Opportunities for Diversion**

**ISSUE SUMMARY**

To report back on how the Capital Regional District's Solid Waste Management Plan can be leveraged to support school districts in implementing and maintaining effective recycling programs.

**BACKGROUND**

At its September 2025 meeting, the Capital Regional District (CRD) Board directed staff to report back on how the Solid Waste Management Plan (SWMP) could be leveraged to extend recycling programs to schools as well as other institutional customers. The Board also directed staff to write letters to all school districts in the region to inform them of their obligation to divert certain materials from landfill disposal to comply with existing municipal or regional bylaws (Appendix A).

**ANALYSIS**

*Provincial Regulations and Programs*

Through its Recycling Regulation, BC's *Environmental Management Act* requires producers of regulated products to create Extended Producer Responsibility (EPR) programs that collect, manage, and process a range of recyclable materials once they reach end-of-life. Recycle BC is the stewardship agency responsible for managing the residential packaging and paper products (PPP) included in BC's EPR program. The CRD is contracted by Recycle BC to collect PPP materials from single-family homes through its curbside blue box program.

While many packaging materials generated by schools are similar to those collected through the CRD's curbside program, these recyclables are commercial sector materials when disposed of through non-residential collection systems and consequently are not included in existing EPR programs. Schools fall within the industrial, commercial and institutional (ICI) sector and therefore cannot be included in the CRD's current statement of work with Recycle BC. Schools must contract waste management services from private service providers.

*Regional Authority and Bylaws*

The CRD does not currently have regulatory authority to mandate source separation for the ICI sector or direction to request this authority from the Province in the region's current SWMP. The CRD's primary solid waste regulatory authority under the Environmental Management Act is the banning of materials from disposal at Hartland Landfill and does not have the authority to mandate source separation of waste. In BC, it is municipalities that have source separation authority under the Local Government Act. Pursuing the regulatory authority to mandate source separation for all sectors could be included as a strategy option in the CRD's next draft SWMP for Board and public consideration.

The primary bylaw relevant to the ICI sector and, by extension, school districts operating in the region is the Hartland Landfill Tipping Fee and Regulation Bylaw No. 3881, which prohibits the disposal of certain materials like garbage. Prohibited materials, most likely to be generated in schools, include corrugated cardboard, mixed paper, beverage containers, electronics and electrical materials, and kitchen scraps. Enforcement of this bylaw is carried out through tickets and fines if loads brought to the landfill contain these banned materials.

### *Solid Waste Management Plan Direction*

The CRD's Solid Waste Management Plan includes several strategies and actions that can be leveraged to support recycling programs in schools. Appendix B outlines new initiatives that could be offered in connection to strategies 1C, 1D, 6D, 9A, 9B and 11A of the SWMP, with Strategy 9 specifically targeting increased ICI diversion (recycling).

### *Engagement with School Districts*

In response to Board direction, staff issued letters to the four school districts operating in the region (Appendix A) to remind schools of their role in diverting banned materials from Hartland Landfill. This letter also invited each school district to share information about their current waste management practices, diversion challenges and the opportunities they see for improvement. Three of these four invited school districts (75%) met with CRD staff to discuss their challenges in implementing effective recycling systems.

Several key barriers were identified in these conversations, including:

- the high cost of collection services and infrastructure
- competing operational priorities that limit available resources and staffing for program implementation
- managing contamination and pests
- accessing ICI recycling services, especially in remote areas like the Southern Gulf Islands

Through follow-up discussions with school district staff and a review of both current CRD activities and examples from other jurisdictions, staff identified several opportunities to support schools in their diversion efforts (Appendix B). These proposed activities include assisting elementary schools with pack-in/pack-out strategies which help route recyclable materials back to existing residential systems; funding waste audits to provide baseline data for designing effective strategies; and providing funding for adding new recycling streams, piloting initiatives, or improving sorting infrastructure such as waste sorting stations and signage.

Due to the range of campus models and the differing needs of student age groups, pack-in/pack-out supports would be provided for elementary schools, while waste audits and infrastructure funding would largely be directed towards middle and secondary schools. These proposed activities were presented to and validated by participating school districts in January 2026.

### **NEXT STEPS**

Pending Board direction, staff will work with school districts to implement new initiatives to support their diversion efforts in addition to the established educational programs that the CRD already maintains, including classroom outreach, landfill tours and workshops delivered by the Compost Education Centre. Grant funding is currently available for schools wishing to complete projects related to waste reduction.

In alignment with the SWMP, staff will continue to investigate options for the mandatory source separation of waste across sectors and advocate for the expansion of EPR programs to the ICI sector.

**ALTERNATIVES**

*Alternative 1*

The Environmental Services Committee recommends to the Capital Regional District Board: That staff offer the recycling program supports outlined in Appendix B to all school districts operating in the capital region.

*Alternative 2*

The Environmental Services Committee recommends to the Capital Regional District Board: That this report be referred back to staff for additional information.

**IMPLICATIONS**

*Alignment with Existing Plans & Strategies*

Collaborating with schools to increase waste diversion aligns with Strategies 1C, 1D, 6D, 9A, 9B and 11A in the CRD’s current Solid Waste Management Plan.

*Financial Implications*

The activities associated with these recommendations will be funded by Environmental Resource Management’s core operations budget (1.521) through an existing \$700,000 allocation for community support programs. As per the table below, for 2026, up to \$100,000 could be used to support these ICI activities while still leaving surplus funds for other ad hoc community support opportunities in 2026. 2026 committed funds primarily consist of Rethink Waste Grants and the new Beyond the Curb initiative. Based on anticipated participation and costs associated with the school district support work in 2026, a portion of the 2027 community support allocation could be used to continue supporting school diversion initiatives.

<b>Community Support Budget Allocation (2026)</b>	
<b>Total Budget</b>	<b>\$700,000</b>
<b>Committed to date</b>	\$546,000
<b>Uncommitted Funds</b>	\$154,000
<b>Available funds for supporting school districts</b>	\$100,000

As funding and staff resources allow, excess Community Support budget funds will be used for other ICI diversion initiatives highlighted in Strategy 9 of the CRD Solid Waste Management Plan.

*Service Delivery Implications*

There are no significant service delivery implications. The recommended approach can be funded and implemented within the existing ERM budget and human resources.

**CONCLUSION**

Staff were directed by the Board to report on how the Solid Waste Management Plan can be leveraged to support school recycling programs and to write a letter to school districts to outline the requirement to comply with existing landfill disposal bans. Staff reviewed current supports, engaged with school district staff to understand barriers and identified opportunities to enhance diversion through educational materials and funding. Staff will work with school districts to provide targeted support and ensure that the implementation of these new initiatives supports the goals and targets outlined in the Solid Waste Management Plan.

**RECOMMENDATION**

The Environmental Services Committee recommends to the Capital Regional District Board: That staff offer the recycling program supports outlined in Appendix B to all school districts operating in the capital region.

Submitted by:	Russ Smith, Senior Manager, Environmental Resource Management
Concurrence:	Luisa Jones, MBA, General Manager, Parks, Recreation & Environmental Services
Concurrence:	Ted Robbins, B. Sc., C. Tech., Chief Administrative Officer

**ATTACHMENTS**

- Appendix A: Letter to School Districts – September 2025
- Appendix B: Solid Waste Management Plan – Proposed Actions to Support for School Districts



Making a difference...together

Parks, Recreation & Environmental Services  
625 Fisgard Street, PO Box 1000  
Victoria, BC, Canada V8W 2S6

T: 250.360.3000  
www.crd.ca

September 24, 2025

File: 2320-20  
Correspondence

Deb Whitten  
Superintendent  
Greater Victoria School District No. 61  
556 Boleskine Road  
Victoria, BC V8Z 1E8  
Via email: [whitten@sd61.bc.ca](mailto:whitten@sd61.bc.ca)

**RE: INVITATION TO COLLABORATE ON WASTE DIVERSION AND REDUCTION INITIATIVES  
IN SCHOOLS**

Dear Deb Whitten:

I hope the new school year has started well in School District 61.

The Capital Regional District (CRD) Board, at its September 10, 2025 meeting, directed staff to connect with each school district in the region to exchange information, to better understand current waste practices and to discuss potential areas of collaboration that will improve waste diversion from schools.

With that in mind, I'm writing to invite School District 61 to meet with the CRD this fall so we can learn about your current programs and understand what role the CRD could have in helping school districts reinforce consistent waste diversion programs that align with the CRD's Solid Waste Management Plan (SWMP) and the operation of Hartland Landfill.

The CRD owns and operates Hartland Landfill, the region's only landfill. As required under provincial legislation, regional districts in BC must develop and implement SWMP's long-term strategies designed to reduce waste and manage materials according to the 5R Pollution Prevention Hierarchy (Reduce, Reuse, Recycle, Recovery and Residuals Management).

Our current SWMP aims to extend the life of Hartland Landfill beyond 2100 by minimizing the amount of waste that is deposited each year. Schools play a key role in this effort, both as generators of waste and as influential learning environments that can inspire lifelong sustainable habits across a broad community.

As institutions, schools are also expected to comply with the Hartland Landfill Tipping Fee and Regulation Bylaw No. 3881, which prohibits certain materials from being disposed of as garbage in the landfill, including:

- Kitchen scraps
- Corrugated cardboard and mixed paper
- Beverage containers
- Electronics and electrical materials

Ensuring that these recyclable materials are separated at the source for collection not only helps avoid potential fines but also demonstrates environmental leadership and sets a positive example for students, staff and families.



Making a difference...together

Parks, Recreation & Environmental Services  
625 Fisgard Street, PO Box 1000  
Victoria, BC, Canada V8W 2S6

T: 250.360.3000  
[www.crd.ca](http://www.crd.ca)

We recognize that many schools face unique challenges when it comes to implementing effective diversion programs. To that end, our team is committed to learning more from your staff and collaborating on practical solutions. We invite your school district to:

- Participate in a detailed discussion with CRD staff to exchange information, review current practices and identify opportunities for improvement.
- Provide feedback on a range of existing and potential tools, resources and programs that the CRD could develop to assist with implementing or enhancing waste diversion initiatives; and
- Share insights on the specific challenges schools are facing so we can tailor our support accordingly.

Thank you for your attention to this matter and for your ongoing leadership in shaping sustainable practices in our region. Please contact Melanie Tromp Hoover (Manager, Policy & Planning) at 250.360.3197 or [mtromphoover@crd.bc.ca](mailto:mtromphoover@crd.bc.ca) with any questions or to set up a meeting to discuss the above points in detail.

We look forward to collaborating with School District 61 on advancing waste diversion and helping create a model of environmental stewardship for our students and communities.

Best regards,

A handwritten signature in black ink, appearing to read 'R. Smith', written over a light blue horizontal line.

Russ Smith,  
Senior Manager, Environmental Resource Management

c.c.: Luisa Jones, General Manager, Parks, Recreation & Environmental Services, CRD  
Melanie Tromp Hoover, Manager, Policy & Planning, Environmental Resource Management, CRD





Making a difference...together

Parks, Recreation & Environmental Services  
625 Fisgard Street, PO Box 1000  
Victoria, BC, Canada V8W 2S6

T: 250.360.3000  
www.crd.ca

September 24, 2025

File: 2320-20  
Correspondence

Paul Block  
Superintendent  
Sooke School District No. 62  
3143 Jacklin Road  
Langford, BC V9B 5R1  
Via email: [pblock@sd62.bc.ca](mailto:pblock@sd62.bc.ca)

**RE: INVITATION TO COLLABORATE ON WASTE DIVERSION AND REDUCTION INITIATIVES  
IN SCHOOLS**

Dear Paul Block:

I hope the new school year has started well in School District 62.

The Capital Regional District (CRD) Board, at its September 10, 2025 meeting, directed staff to connect with each school district in the region to exchange information, to better understand current waste practices and to discuss potential areas of collaboration that will improve waste diversion from schools.

With that in mind, I'm writing to invite School District 62 to meet with the CRD this fall so we can learn about your current programs and understand what role the CRD could have in helping school districts reinforce consistent waste diversion programs that align with the CRD's Solid Waste Management Plan (SWMP) and the operation of Hartland Landfill.

The CRD owns and operates Hartland Landfill, the region's only landfill. As required under provincial legislation, regional districts in BC must develop and implement SWMP's long-term strategies designed to reduce waste and manage materials according to the 5R Pollution Prevention Hierarchy (Reduce, Reuse, Recycle, Recovery and Residuals Management).

Our current SWMP aims to extend the life of Hartland Landfill beyond 2100 by minimizing the amount of waste that is deposited each year. Schools play a key role in this effort, both as generators of waste and as influential learning environments that can inspire lifelong sustainable habits across a broad community.

As institutions, schools are also expected to comply with the Hartland Landfill Tipping Fee and Regulation Bylaw No. 3881, which prohibits certain materials from being disposed of as garbage in the landfill, including:

- Kitchen scraps
- Corrugated cardboard and mixed paper
- Beverage containers
- Electronics and electrical materials

Ensuring that these recyclable materials are separated at the source for collection not only helps avoid potential fines but also demonstrates environmental leadership and sets a positive example for students, staff and families.



Making a difference...together

Parks, Recreation & Environmental Services  
625 Fisgard Street, PO Box 1000  
Victoria, BC, Canada V8W 2S6

T: 250.360.3000  
[www.crd.ca](http://www.crd.ca)

We recognize that many schools face unique challenges when it comes to implementing effective diversion programs. To that end, our team is committed to learning more from your staff and collaborating on practical solutions. We invite your school district to:

- Participate in a detailed discussion with CRD staff to exchange information, review current practices and identify opportunities for improvement.
- Provide feedback on a range of existing and potential tools, resources and programs that the CRD could develop to assist with implementing or enhancing waste diversion initiatives; and
- Share insights on the specific challenges schools are facing so we can tailor our support accordingly.

Thank you for your attention to this matter and for your ongoing leadership in shaping sustainable practices in our region. Please contact Melanie Tromp Hoover (Manager, Policy & Planning) at 250.360.3197 or [mtromphoover@crd.bc.ca](mailto:mtromphoover@crd.bc.ca) with any questions or to set up a meeting to discuss the above points in detail.

We look forward to collaborating with School District 62 on advancing waste diversion and helping create a model of environmental stewardship for our students and communities.

Best regards,

A handwritten signature in black ink, appearing to read 'R. Smith', written over a light blue horizontal line.

Russ Smith,  
Senior Manager, Environmental Resource Management

c.c.: Luisa Jones, General Manager, Parks, Recreation & Environmental Services, CRD  
Melanie Tromp Hoover, Manager, Policy & Planning, Environmental Resource Management, CRD





Making a difference...together

Parks, Recreation & Environmental Services  
625 Fisgard Street, PO Box 1000  
Victoria, BC, Canada V8W 2S6

T: 250.360.3000  
www.crd.ca

September 24, 2025

File: 2320-20  
Correspondence

Dave Eberwein  
Superintendent  
Saanich School District No. 63  
2125 Keating Cross Road  
Saanichton, BC V8M 2A5  
Via email: [deberwein@saanichschools.ca](mailto:deberwein@saanichschools.ca)

**RE: INVITATION TO COLLABORATE ON WASTE DIVERSION AND REDUCTION INITIATIVES  
IN SCHOOLS**

Dear Dave Eberwein:

I hope the new school year has started well in School District 63.

The Capital Regional District (CRD) Board, at its September 10, 2025 meeting, directed staff to connect with each school district in the region to exchange information, to better understand current waste practices and to discuss potential areas of collaboration that will improve waste diversion from schools.

With that in mind, I'm writing to invite School District 63 to meet with the CRD this fall so we can learn about your current programs and understand what role the CRD could have in helping school districts reinforce consistent waste diversion programs that align with the CRD's Solid Waste Management Plan (SWMP) and the operation of Hartland Landfill.

The CRD owns and operates Hartland Landfill, the region's only landfill. As required under provincial legislation, regional districts in BC must develop and implement SWMP's long-term strategies designed to reduce waste and manage materials according to the 5R Pollution Prevention Hierarchy (Reduce, Reuse, Recycle, Recovery and Residuals Management).

Our current SWMP aims to extend the life of Hartland Landfill beyond 2100 by minimizing the amount of waste that is deposited each year. Schools play a key role in this effort, both as generators of waste and as influential learning environments that can inspire lifelong sustainable habits across a broad community.

As institutions, schools are also expected to comply with the Hartland Landfill Tipping Fee and Regulation Bylaw No. 3881, which prohibits certain materials from being disposed of as garbage in the landfill, including:

- Kitchen scraps
- Corrugated cardboard and mixed paper
- Beverage containers
- Electronics and electrical materials

Ensuring that these recyclable materials are separated at the source for collection not only helps avoid potential fines but also demonstrates environmental leadership and sets a positive example for students, staff and families.



Making a difference...together

Parks, Recreation & Environmental Services  
625 Fisgard Street, PO Box 1000  
Victoria, BC, Canada V8W 2S6

T: 250.360.3000  
[www.crd.ca](http://www.crd.ca)

We recognize that many schools face unique challenges when it comes to implementing effective diversion programs. To that end, our team is committed to learning more from your staff and collaborating on practical solutions. We invite your school district to:

- Participate in a detailed discussion with CRD staff to exchange information, review current practices and identify opportunities for improvement.
- Provide feedback on a range of existing and potential tools, resources and programs that the CRD could develop to assist with implementing or enhancing waste diversion initiatives; and
- Share insights on the specific challenges schools are facing so we can tailor our support accordingly.

Thank you for your attention to this matter and for your ongoing leadership in shaping sustainable practices in our region. Please contact Melanie Tromp Hoover (Manager, Policy & Planning) at 250.360.3197 or [mtromphoover@crd.bc.ca](mailto:mtromphoover@crd.bc.ca) with any questions or to set up a meeting to discuss the above points in detail.

We look forward to collaborating with School District 63 on advancing waste diversion and helping create a model of environmental stewardship for our students and communities.

Best regards,

A handwritten signature in black ink, appearing to read 'R. Smith', with a long horizontal flourish extending to the right.

Russ Smith,  
Senior Manager, Environmental Resource Management

c.c.: Luisa Jones, General Manager, Parks, Recreation & Environmental Services, CRD  
Melanie Tromp Hoover, Manager, Policy & Planning, Environmental Resource Management, CRD





Making a difference...together

Parks, Recreation & Environmental Services  
645 Fisgard Street, PO Box 1000  
Victoria, BC, Canada V8W 2S6

T: 250.360.3000  
www.crd.ca

September 26, 2025

File: 2320-20  
Correspondence

Dr. Jill Jensen  
Superintendent  
School District No. 64 (Gulf Islands)  
112 Rainbow Road  
Salt Spring Island, BC V8K2K3  
Via email: [jjensen@sd64.org](mailto:jjensen@sd64.org)

**RE: INVITATION TO COLLABORATE ON WASTE DIVERSION AND REDUCTION INITIATIVES  
IN SCHOOLS**

Dear Dr. Jensen:

I hope the new school year has started well in School District 64.

The Capital Regional District (CRD) Board, at its September 10, 2025 meeting, directed staff to connect with each school district in the region to exchange information, to better understand current waste practices and to discuss potential areas of collaboration that will improve waste diversion from schools.

With that in mind, I'm writing to invite School District 64 to meet with the CRD this fall so we can learn about your current programs and understand what role the CRD could have in helping school districts reinforce consistent waste diversion programs that align with the CRD's Solid Waste Management Plan (SWMP) and the operation of Hartland Landfill.

The CRD owns and operates Hartland Landfill, the region's only landfill. As required under provincial legislation, regional districts in BC must develop and implement SWMP's long-term strategies designed to reduce waste and manage materials according to the 5R Pollution Prevention Hierarchy (Reduce, Reuse, Recycle, Recovery and Residuals Management).

Our current SWMP aims to extend the life of Hartland Landfill beyond 2100 by minimizing the amount of waste that is deposited each year. Schools play a key role in this effort, both as generators of waste and as influential learning environments that can inspire lifelong sustainable habits across a broad community.

As institutions, schools are also expected to comply with the Hartland Landfill Tipping Fee and Regulation Bylaw No. 3881, which prohibits certain materials from being disposed of as garbage in the landfill, including:

- Kitchen scraps
- Corrugated cardboard and mixed paper
- Beverage containers
- Electronics and electrical materials

Ensuring that these recyclable materials are separated at the source for collection not only helps avoid potential fines but also demonstrates environmental leadership and sets a positive example for students, staff and families.



Making a difference...together

Parks, Recreation & Environmental Services

645 Fisgard Street, PO Box 1000

Victoria, BC, Canada V8W 2S6

T: 250.360.3000

[www.crd.ca](http://www.crd.ca)

We recognize that many schools face unique challenges when it comes to implementing effective diversion programs. To that end, our team is committed to learning more from your staff and collaborating on practical solutions. We invite your school district to:

- Participate in a detailed discussion with CRD staff to exchange information, review current practices and identify opportunities for improvement.
- Provide feedback on a range of existing and potential tools, resources and programs that the CRD could develop to assist with implementing or enhancing waste diversion initiatives; and
- Share insights on the specific challenges schools are facing so we can tailor our support accordingly.

Thank you for your attention to this matter and for your ongoing leadership in shaping sustainable practices in our region. Please contact Melanie Tromp Hoover (Manager, Policy & Planning) at 250.360.3197 or [mtromphoover@crd.bc.ca](mailto:mtromphoover@crd.bc.ca) with any questions or to set up a meeting to discuss the above points in detail.

We look forward to collaborating with School District 64 on advancing waste diversion and helping create a model of environmental stewardship for our students and communities.

Best regards,

A handwritten signature in black ink, appearing to read 'R. Smith', written over a light blue horizontal line.

Russ Smith,  
Senior Manager, Environmental Resource Management

c.c.: Luisa Jones, General Manager, Parks, Recreation & Environmental Services, CRD  
Melanie Tromp Hoover, Manager, Policy & Planning, Environmental Resource Management, CRD



**Solid Waste Management Plan – Proposed Actions to Support School Districts**

<u>SWMP Strategy*</u>	<u>SWMP Actions</u>	<u>Proposed New School Initiatives (black)</u> <u>Enhance Existing School Initiatives (grey)</u>
<b>Strategy 1</b> Continue and Enhance Education Programs	1C. Expand education programs to multi-family and ICI sectors.	<ul style="list-style-type: none"> <li>Assist schools in implementing or refreshing pack-in / pack-out policies.</li> </ul>
	1D. Enhance K-12 school program to include concepts of zero waste and circular economy.	<ul style="list-style-type: none"> <li>Continue to provide teaching resources for waste reduction.</li> </ul>
<b>Strategy 2</b> Encourage Waste Prevention	2B. Establish a community-based waste reduction grant program.	<ul style="list-style-type: none"> <li>Continue to promote the CRD’s ReThink Waste grant program to school districts and committees.</li> <li>Continue to share successful school-based projects and ideas with education sector stakeholders.</li> </ul>
	2D. Promote sustainable and/or packaging-free purchasing options.	<ul style="list-style-type: none"> <li>Pack-in/pack-out strategies encourage more sustainable and packaging free options so that families will have less to manage and students will have less to “pack-out”.</li> </ul>
<b>Strategy 3</b> Support Reduction of Avoidable Food Waste	3A. Continue to support residential food waste reduction through education campaign and composting promotion.	<ul style="list-style-type: none"> <li>Continue to partner with <i>Love Food Hate Waste (LFHW) Canada</i>, which seeks to reduce avoidable food waste. LFHW will be releasing new resources to guide families on reducing avoidable food waste from packing lunches.</li> </ul>
<b>Strategy 6</b> Continue and Enhance Policy Development	6D. Investigate regulatory mechanisms to manage MSW and recyclable materials in the region.	<ul style="list-style-type: none"> <li>Continue to investigate mandatory source separation and supporting regulations for ICI sector.</li> </ul>
<b>Strategy 7</b> Increase Residential Diversion	7A. Continue to promote residential diversion of recyclable materials (including organics), ensuring that education campaigns strive to minimize contamination in these streams.	<ul style="list-style-type: none"> <li>Pack-in/pack-out programs encourage families to use residential recycling systems available for their materials. Packaging from lunches can be incorporated into available residential recycling programs when at the household level.</li> </ul>

<u>SWMP Strategy*</u>	<u>SWMP Actions</u>	<u>Proposed New School Initiatives (black)</u> <u>Enhance Existing School Initiatives (grey)</u>
	7B. Collaborate with municipal and private sector service providers to support depot diversion efforts in the region for non-curbside materials.	<ul style="list-style-type: none"> <li>• Investigate options for including flexible plastics in the CRD’s residential curbside program for single-family homes.</li> <li>• Partner with municipalities and private sector service providers to expand drop-off options for recyclable materials that are not included in the curbside program.</li> </ul>
<b>Strategy 9</b> Increase ICI Diversion	9A. Allocate resources to increase ICI diversion, for example, a business waste reduction liaison.	<ul style="list-style-type: none"> <li>• Fund waste audits for schools.</li> <li>• Designate funding for implementing new recycling streams, piloting new diversion initiatives, or improving sorting infrastructure.</li> <li>• Focus staff resources for ICI waste reduction towards schools.</li> </ul>
	9B. Advocate to expand the PPP EPR to the ICI sector.	<ul style="list-style-type: none"> <li>• Advocate to the Ministry of Environment and Parks to consider including schools in EPR programs.</li> </ul>
<b>Strategy 11</b> Increase Organics Diversion and Processing Capacity	11A. Continue to promote organics waste diversion.	<ul style="list-style-type: none"> <li>• Continue to provide educational resources funding through Compost Education Centre.</li> <li>• Continue to make grant funding available for school composting projects.</li> </ul>

*\*While schools are considered part of the industrial, commercial and institutional (ICI) sector, actions relating to enhancing residential programs have been included in this list because successful pack-in/pack-out strategies rely heavily on residential recycling systems.*

**REPORT TO ENVIRONMENTAL SERVICES COMMITTEE  
MEETING OF WEDNESDAY, MAY 20, 2026**

---

**SUBJECT**     **Beyond the Curb – Drop-Off Recycling Program for Non-Curbside Materials**

**ISSUE SUMMARY**

To provide information on the Capital Regional District's new Beyond the Curb residential recycling collection program.

**BACKGROUND**

The Capital Regional District's (CRD) curbside recycling program and Hartland Public Drop-off Depot offer effective collection options for specific materials; however, there is an immediate need for more accessible drop-off options for recyclable materials that are not currently collected directly from homes (e.g., flexible plastic and foam packaging) that will serve residents living in all housing types.

While staff continue to investigate options for the curbside collection of flexible plastic packaging, the Beyond the Curb program will begin to address these needs in alignment with Strategies 7, 8 and 10 in the CRD's Solid Waste Management Plan (SWMP) that focus on increasing diversion from residential sources and supporting BC's Extended Producer Responsibility (EPR) programs.

Program design for this regional initiative was based on insights provided from the City of Victoria's Beyond the Curb pilot in 2025, which the CRD supported with funding. The City's program trialed the collection of non-curbside recyclables at community markets, pop-ups and a hub location for Victoria residents from May to December 2025. As part of the CRD's funding agreement, the City provided a final report with pilot results, findings and recommendations. The City subsequently notified CRD staff that they would not be continuing the program in 2026.

Based on the success of the City of Victoria's experimental program, CRD staff have procured a contractor to coordinate, manage and operate a region-wide drop-off program for recyclable materials that are not collected at the curb.

**NEXT STEPS**

The CRD will be working with Adanac Recovery Ltd. (operating as The Bottle Depot) for the next two years to deliver a regional Beyond the Curb program, offering drop-off services for non-curbside recyclables at community markets across the region. At a minimum, this program will operate throughout the market season, which is typically May to October each year. Staff will also seek opportunities for semi-permanent hub collection points that can be offered year-round.

Proposed community markets to host Beyond the Curb were identified based on housing density, gaps in existing services and accessibility to residents. Markets in Victoria, Saanich, Central Saanich and Langford have been identified as ideal locations to address the needs of residents in both single-family and multi-family homes. Suitable locations for hub spaces include recreation centers, schools and other commercial facilities in dense residential areas as these sites are already visited regularly by residents. CRD staff and the contractor will work with municipal partners and other interested parties to source ideal locations for these hub spaces.

By providing multiple free drop-off locations for recyclable materials that can't be collected directly from homes, Beyond the Curb will:

- decrease the amount of recyclable materials that end up in Hartland Landfill.
- reduce contamination in the CRD’s curbside blue box recycling program.
- support municipalities in meeting their waste reduction goals.
- gather data and insights to inform recommendations for regional recycling facility needs.

**IMPLICATIONS**

*Environmental Implications*

Beyond the Curb will provide regular and consistent drop-off options for non-curbside recyclable materials that residents can rely on and build habits around. Program participation will increase diversion from all residential sources, support existing EPR programs and extend the life of Hartland Landfill.

*Financial Implications*

The activities associated with these recommendations will be funded by Environmental Resource Management’s core operations budget (1.521) through an existing \$700,000 allocation for community support programs. This 2-year project is funded through Environmental Resource Management’s 2026 and 2027 core operating budget, with funding specifically allocated for Community Support programs. In the table below, funding for this program is included in the “Committed to date” figures.

	<b>Community Support Budget Allocation</b>	
	<b>2026</b>	<b>2027</b>
<b>Total</b>	<b>\$700,000</b>	<b>1,500,000</b>
<b>Committed to date</b>	\$546,000	1,200,000
<b>Uncommitted Funds</b>	\$154,000	300,000

**CONCLUSION**

The Capital Regional District’s curbside recycling program and Hartland Public Drop-off Depot offer effective collection options for specific materials; however, there is a need for more accessible drop-off options—especially for flexible plastic and foam packaging. The Capital Regional District will be launching a region wide Beyond the Curb program to address this gap, providing drop-off points for these materials at community markets in high density locations. Staff will also explore options to extend this program to semi-permanent hub locations so that residents from all housing types can access this program year-round. By providing consistent drop-off opportunities for depot-only recyclables closer to home, Beyond the Curb will increase waste diversion and extend the life of Hartland Landfill.

**RECOMMENDATION**

There is no recommendation. This report is for information only.

Submitted by:	Russ Smith, Senior Manager, Environmental Resource Management
Concurrence:	Luisa Jones, MBA, General Manager, Parks, Recreation & Environmental Services
Concurrence:	Ted Robbins, B. Sc., C. Tech., Chief Administrative Officer

# Capital Regional District

## Meeting Minutes

### Solid Waste Advisory Committee

---

Friday, January 9, 2026

CRD Boardroom  
625 Fisgard Street  
Victoria, BC V8W 2S6

PRESENT: B. Desjardins (Chair), M. Hauzer, M. Kurschner (EP), E. Latta (EP), T. Love, M. McCullough (EP), D. Monsour, J. Oakley (EP), R. Pirie, C. Remington, J. Shaw, A. Sibley (EP), P. Singh, J. Smith (EP), M. Smith, J. Stitt, D. Thran, H. Unger

STAFF: V. Landa (Recorder), R. Smith, A. Chambers, A. Gilmour Ford, D. Moghaddam, N. Roberts, N. Salter, M. Tromp Hoover

REGRETS: F. Baker, M. Coburn, S. Young Jr.

EP - Electronic Participation

The meeting was called to order at 12:30 pm.

#### 1. Territorial Acknowledgement

#### 2. Approval of Agenda

Agenda for the January 9, 2026 Solid Waste Advisory Committee meeting.

**MOVED by D. Monsour, SECONDED by D. Thran**

That the agenda be approved as circulated.

**CARRIED**

#### 3. Adoption of Minutes

Minutes from the June 6, 2025, Solid Waste Advisory Committee meeting.

Minutes from the October 10, 2025, Solid Waste Advisory Committee meeting.

**MOVED by M. Hauzer, SECONDED by C. Remington**

That the meeting minutes be approved as circulated.

**CARRIED**

#### 4. Chair's Remarks

- The Chair noted that 2026 is the final year of her CRD Board term with elections occurring this year.
- The Chair welcomed new members: T. Love, Owner/Operator of Private Waste Management Facility; P. Singh, Public representatives, at large; H. Unger, Public representatives, at large; J. Stitt, Willis Point representative; and M. Smith, Municipal Engineering Staff, City of Victoria.

## 5. Presentations/Delegations

There were none.

## 6. Committee Business

- a. Staff Reports (for information)

[Mattress Recycling – Provincial Policy Update](#) (November 12, 2025, CRD Board). M. Tromp Hoover provided a verbal update on the Mattress Recycling – Provincial Policy Update staff report, and it is attached as Appendix A.

- b. Rethink Waste Grant – 2025 Results (Presentation)

D. Moghaddam and N. Salter provided an overview of the Rethink Waste Grant Program including the Community Grant with project examples and the Zero-Waste Event Grant results. The presentation is attached as Appendix B.

- c. Material Diversion Transfer Station – Progress Update (Presentation)

N. Roberts provided a progress update on the Solid Waste Management Plan Waste Composition Study including diversion strategies and results along with next steps. The presentation is attached as Appendix C.

- d. Actual and Projected Monthly Refuse Tonnages at Hartland Landfill (standing item)

The tonnage graphs are posted via this link: <https://www.crd.bc.ca/about/data/hartland-landfill-tonnage>.

## 7. New Business

There was no new business.

## 8. Next Meeting

The next Solid Waste Advisory Committee meeting will be March 6, 2026.

## 9. Closing Comments

There were no closing comments.

## 10. Adjournment

The meeting was adjourned at 14:07.

**MOVED by D. Monsour, SECONDED by M. Smith**  
That the Solid Waste Advisory Committee be adjourned.  
**CARRIED**

**REPORT TO ENVIRONMENTAL SERVICES COMMITTEE  
MEETING OF WEDNESDAY, OCTOBER 15, 2025**

---

**SUBJECT**     **Mattress Recycling – Provincial Policy Update**

**ISSUE SUMMARY**

To provide an update on the recent exclusion of mattresses from a forthcoming amendment to the *BC Recycling Regulation*, including impacts for the Capital Regional District's (CRD) solid waste service.

**BACKGROUND**

In BC, Extended Producer Responsibility (EPR) is an environmental policy that holds producers accountable for the full lifecycle of their products, including the costs and logistics for end-of-life collection and recycling. In 2021, the BC Ministry of Environment & Parks released an action paper titled "Advancing Recycling in BC: Extended Producer Responsibility Five-Year Action Plan". This report called for the launch of several new EPR programs, including one for mattresses and foundations that was set to launch in 2025.

Local and regional governments across BC have long advocated for and supported the Ministry's plan to implement EPR for mattresses, including resolutions from the Union of BC Municipalities in both 2014 and 2020 that called for the inclusion of mattresses in any future update to EPR programs. Despite significant support from these stakeholders, the Ministry recently reversed its position in July 2025, informing regional districts, through the BC Product Stewardship Council, that mattresses had been removed from a forthcoming update to the *BC Recycling Regulation*.

The rationale for this policy reversal is a concern that EPR fees would appear to increase costs for consumers during a period of inflationary pressure. The Province's economic analysis determined that, to reflect the true cost of end-of-life management for mattresses, potential EPR fees could be as high as \$40-45 per unit. These would be charged at the time of purchase rather than disposal as they are now, potentially appearing as a cost increase to consumers due to this shift in timing. However, the Province also acknowledged that local and regional governments are currently subsidizing the disposal costs for these products to avoid illegal dumping—recognizing that the actual cost of recycling is already being covered by local governments and as a result, taxpayers, instead of the producers and consumers of these products.

**DISCUSSION**

Hartland Landfill currently accepts mattresses and their foundations as general refuse, charging \$155/tonne in 2025 plus a \$10 bin fee. Hartland also offers a voluntary mattress recycling program as part of its public drop-off area for the same cost as disposal. Through this voluntary program, the CRD shipped 280 tonnes of mattresses with metal springs for local processing in 2024 at a net cost of approximately \$162,000. These figures do not include processing and landfilling costs for the high volume of mattresses and foundations accepted at Hartland Landfill that were not suitable for recycling.

Staff at several regional districts across BC are seeking direction from their Boards to send letters to the Minister of Environment & Parks to express their objections to the exclusion of mattresses from the Province's forthcoming EPR program expansion. This advocacy aligns with the CRD's Solid Waste Management Plan Strategy #10, Action A to "Advocate to the Province to expand EPR programs".

#### Current Challenges in Mattress Disposal and Recycling

- Mattresses and their foundations are very expensive and difficult to landfill as they do not easily compress or compact, so they take up significant airspace.
- If not dismantled and shredded, the metal springs and wires in mattresses can cause significant damage to the wheels and tracks of heavy equipment, which in turn increases maintenance costs and decreases operational capacity due to machinery downtimes.
- Coordinating recycling options for mattresses and foundations is also challenging for individual landfills as they are bulky, heavy and difficult to store and transport.
- The recycling value of mattress components (e.g., metal, felt, foam, wood) is determined by the quality of the units, yet keeping these materials dry and clean to preserve their value requires significant covered storage that is cost prohibitive to maintain.
- Mattresses and their foundations can also be contaminated with biohazards, posing a risk for staff who are moving these materials on site.
- While some local deconstruction is possible for certain types of mattresses, foam mattresses have become a larger share of this product category and do not contain high-value materials, nor can they be deconstructed effectively.

Mattresses are frequently dumped illegally in public spaces, with clean-up and enforcement costs covered primarily by municipalities. Although the CRD has local mattress hauling and processing contracts in place, most mattresses brought to Hartland Landfill are currently processed for recycling or shredded on site to reduce costs, airspace consumption and the risk of equipment damage.

#### Benefits of an EPR Program for Mattresses

- An EPR program for mattresses will transfer the financial and logistical burdens of end-of-life collection and management from local and regional governments to the producers and consumers of these products through a user-pay model charged at the time the mattress is purchased.
- The economies of scale and logistics coordination benefits of a province-wide EPR program will reduce market vulnerability for mattress recycling businesses.
- Mattresses and their foundations could be disposed of for free at Hartland Landfill and other recycling depots, reducing the incentive for illegal dumping throughout the region.

If an EPR program for mattresses is implemented by the Province, the CRD would expect to receive a fee for collecting, storing and handling these materials from a stewardship organization much like other EPR programs in BC. Only mattresses deemed unsuitable for recycling would be shredded and landfilled, saving significant airspace and therefore extending the lifespan of Hartland Landfill.

## **ALTERNATIVES**

### *Alternative 1*

The Environmental Services Committee recommends to the Capital Regional District Board: That the Board Chair is authorized to send an advocacy letter to the Ministry of Environment & Parks expressing the Capital Regional District's objection to the recent exclusion of mattresses from its forthcoming update to the Province's *Recycling Regulation*.

### *Alternative 2*

The Environmental Services Committee recommends to the Capital Regional District Board: That this report be referred back to staff for additional information.

## **IMPLICATIONS**

### *Alignment with Existing Plans & Strategies*

Advocating for the inclusion of mattresses in a future update to the Province's *Recycling Regulation* aligns with Strategy #10 in the CRD's Solid Waste Management Plan to "Support Existing and New Extended Producer Responsibility Programs".

### *Environmental Implications*

Hartland Landfill currently receives a significant volume of mattresses and their foundations for disposal each year, both directly from residents and from municipalities that are retrieving illegally dumped materials. Although these products are currently being processed for recycling or shredded on site, continued disposal of these materials reduces the lifespan of Hartland Landfill.

### *Financial Implications*

The CRD is currently subsidizing the cost of recycling for mattresses by approximately \$162,000 annually. This figure does not include processing and landfilling costs for the high volume of mattresses that are not suitable for recycling. A province-wide EPR program will remove this cost from Environmental Resource Management's operational budget and allow for the development of the local mattress recycling industry with no budget impact. Free disposal of mattresses and their foundations at Hartland Landfill under an EPR program would also reduce the incentive to dump these products illegally across the region, reducing cleanup and enforcement costs currently covered by municipalities.

## **CONCLUSION**

The Capital Regional District (CRD) is currently subsidizing the cost of end-of-life collection, management and recycling for mattresses. An Extended Producer Responsibility (EPR) program for these products, as previously endorsed by the Province, will shift the financial and logistical burden of mattress disposal from the CRD to producers much like dozens of other products already under EPR stewardship. A new EPR program will also reduce illegal dumping, extend the life of Hartland Landfill and support the development of a circular economy by leveraging the economies of scale for mattress recycling. Staff recommend that the CRD Board respond to the Province's recent policy decision with an advocacy letter that reinforces CRD support for an EPR program that will reflect the true cost of managing mattresses.

**RECOMMENDATION**

The Environmental Services Committee recommends to the Capital Regional District Board:  
That the Board Chair is authorized to send an advocacy letter to the Ministry of Environment & Parks expressing the Capital Regional District's objection to the recent exclusion of mattresses from its forthcoming update to the Province's *Recycling Regulation*.

Submitted by:	Melanie Tromp Hoover, BA, Acting Senior Manager, Environmental Resource Management
Concurrence:	Luisa Jones, MBA, General Manager, Parks, Recreation & Environmental Services
Concurrence:	Ted Robbins, B. Sc., C. Tech., Chief Administrative Officer

# Rethink Waste Grant 2025 Overview

## Environmental Resource Management

Solid Waste Advisory Committee  
January 09, 2026

# Agenda

- Overview of Rethink Waste Grant Program
- Community Grant & Project Examples
- Zero-Waste Event Grant & Event Examples



# Overview - Rethink Waste Grant Program



## SWMP Goals:

**Goal #3: To have informed citizens that participate effectively in proper waste management practices**

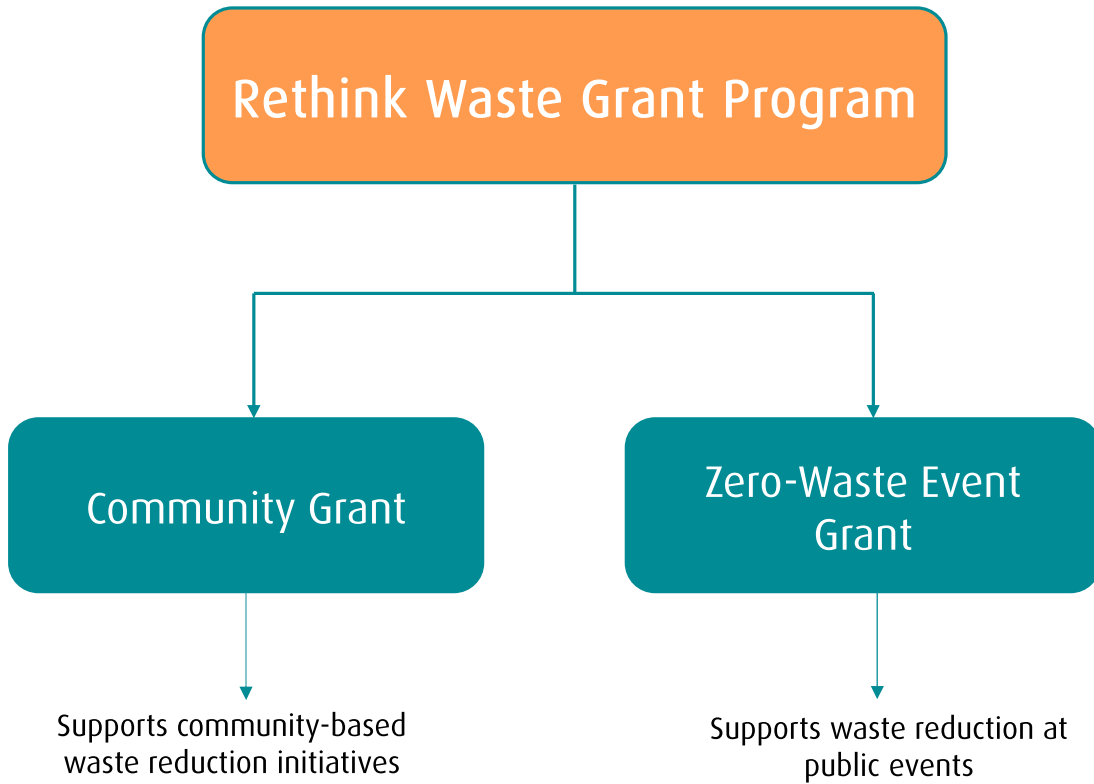
## SWMP Strategy#2B:

- Establish a Community-based waste reduction grant program

## Objective:

- To fund community projects that advance the 5R-Pollution Prevention hierarchy by diverting materials from landfill.

# Overview



# Community Grant (2022-2025)



Year	Number of Applications Received	Funding Approved
2022	19	\$48,137
2023	31	\$79,590
2024	31	\$66,973
2025	50	\$174,091



# Lifecycles Project Society

## Project: Full Circle Fruit Project

- Improving food security in Greater Victoria for 30 years
- Converts B-Grade fruit into juices, jams and jellies

## Achievements:

- Diverted ~7200 lbs of B-Grade fruit from the landfill
- Conducted 3 workshops comprising 44 participants
- Sold 70 jars of jam in 2025

Grant Funds: \$3,166



# District of Saanich

## Project: Reusable Bowls for the Saanich Strawberry Festival

- To reduce the use of single-use paper or compostable bowls
- Provided reusable dishware for the Strawberry Festival

## Achievements:

- Achieved a 95% return rate: 3,528 bowls used; 3,360 bowls returned
- Prevented 3,528 single-use items from entering the landfill
- Promoted Community engagement
- Fostered Community partnerships

Grant Funds: \$5,000



# Transition Salt Spring Society

Projects: Community Clothing Swap & a Community Toy Swap

- To help normalize the reuse and redistribution of unwanted items as an alternative to landfill disposal.

Achievements:

Community Clothing Swap	Community Toy Swap
<ul style="list-style-type: none"><li>• 725 Shoppers</li><li>• 26 volunteers</li><li>• 2,400 lbs of clothing went to new homes</li></ul>	<ul style="list-style-type: none"><li>• 294 shoppers</li><li>• 29 Volunteers</li><li>• 1,215 lbs of toys went to new homes</li></ul>

Grant Funds: \$3,000



# View Royal Elementary School

## Project: Cardboard Creativity and Waste Reduction Toolbox

- Reduce waste by diverting clean cardboard from recycling and using it for multi-stage student projects
- Teach students about the waste hierarchy and principles of circular design using ADST concept.

## Achievements:

- Cardboard is now reused 2-4 times
- Measurable decrease in cardboard volume
- 275 Students participated
- Community engagement

Grant Funds: \$3,345

# Zero-Waste Event Grant

## Grant Overview

- \$10,000 for organizers of public events
- To reduce the amount of event waste going to landfill

## Grant Objectives:

- Increase waste diversion
- Gather data on waste streams and volumes
- Encourage reusable containers



# Zero-Waste Event Grant Results



15 successful grant applications



Total of \$72,051 granted



6013 kg of waste produced overall



89% waste diverted overall  
(i.e. 5362 kg)

# ArtisTree

## Event Info:

- Local art showcase, live music, food vendors at Government House
- ~20,000 attendees

## Achievements:

- Hired a waste manager and bought waste collection infrastructure
- 77% waste diverted from landfill
- Intention to incorporate reusables for 2026

Grant Funds: \$3,888



# Canadian Ultimate Championship – Grand Masters Series



## Event Info:

- National Ultimate Frisbee Tournament
- 4 locations: Topaz Park, Royal Athletic Park, Saint Michael's University, Central Park
- ~920 attendees

## Achievements:

- Hired waste manager to educate and sort
- 97% waste diverted from landfill
- Model shared with Ultimate Canada

Grant Funds: \$5,250

# Crabfest

## Event Info:

- Served +1600 crab boil buckets at Ships Point
- ~12,000 attendees

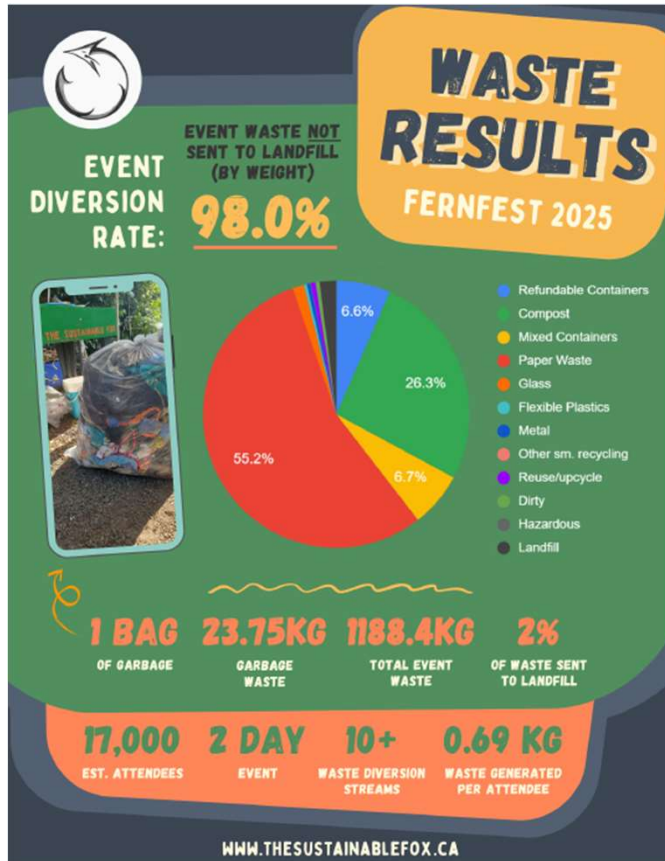
## Achievements:

- Hired a waste manager and purchased waste system infrastructure
- 68% waste diverted from landfill
- Planning to implement reusable containers for 2026

Grant Funds: \$8,737



# Reporting and Data Collection

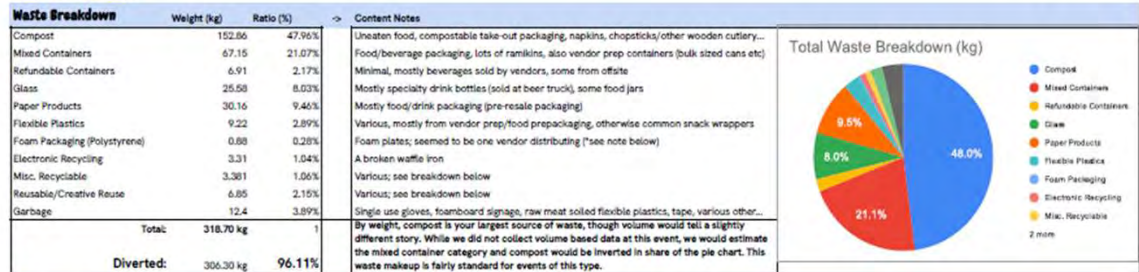


## Soul of Vietnam (2025)

Event date: September 20, 2025

Venue(s): Ship Point (Victoria Inner Harbour)

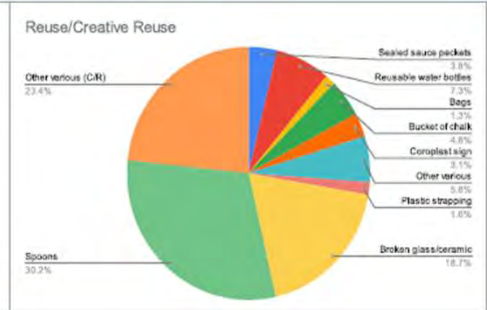
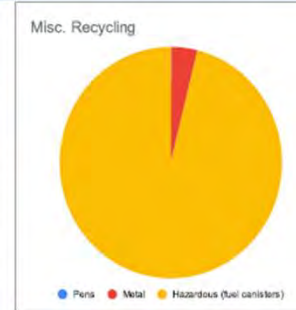
Scale: est. 4000-5000



Misc. Recycling	Weight (kgs)	Ratio (%)
Pens	0.001	0.03%
Metal	0.13	3.85%
Hazardous (fuel canisters)	3.25	96.13%
<b>Total:</b>	<b>3.381</b>	<b>(of 1.06%)</b>

Reuse/Creative Reuse	Weight (kgs)	Ratio (%)
<b>Reuse:</b>		
Sauce in clean, sealed packets	0.26	3.80%
Reusable water bottles	0.5	7.30%
Bags	0.09	1.31%
Bucket of chalk	0.33	4.82%
Coroplast sign	0.21	3.07%
Other various	0.4	5.84%
<b>Creative Reuse:</b>		
Plastic strapping	0.11	1.61%
Broken glass/ceramic	1.28	18.69%
Sturdy single-use spoons	2.07	30.22%
Other various	1.6	23.36%
<b>Total:</b>	<b>6.85</b>	<b>(of 2.15%)</b>



### Notes

General: General observations.

Huge congratulations to everyone involved in making this event happen! What an amazing turn out for an inaugural event, and you served entertainment and delish food all day long. Really well done coordinating all those logistics on a first go!

It was a legitimately really fun place to be all day -- our team worked hard and had a great time from start to end! We're proud to have contributed our piece to this event puzzle and we're so grateful to have been included. Thank you for planning your event with waste reduction in mind and we can't wait to see how we'll continue to improve at this together in years to come!

The Sustainable Fox learned a lot at this event which, when it's as fun as it was, we consider a huge privilege and a blessing. As a young business doing things in a completely different way from the norm, we're often We learned a lot tackling new challenges for the first time and we are so grateful for joyful collaborators.



# Thank you

rethinkwaste@crd.bc.ca



@crdvictoria



Capital Regional District



CRDVictoria



crd.bc.ca

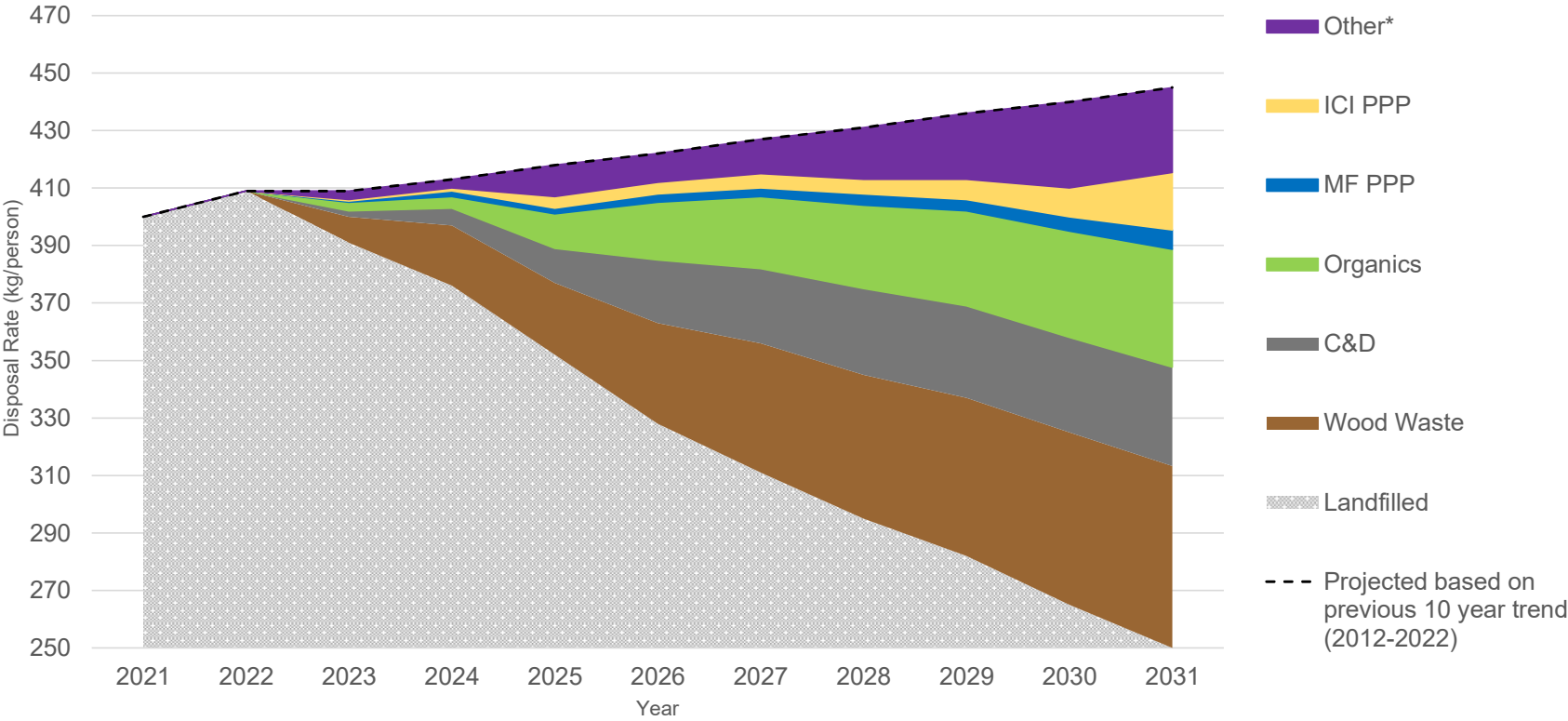
# Hartland Landfill Material Diversion Transfer Station



# Solid Waste Management Plan Waste Composition Study (2022)



# Solid Waste Management Plan Pathway to 250kg/person



# Diversion Strategies

## Tipping fees (2026)

	Tipping Fee (per tonne)
MANDATORY RECYCLABLES	
Clean Wood	\$80
Treated Wood	\$110
Asphalt Shingles	\$110
WASTE	
General refuse/Clean renovation and demolition waste	\$160

# Diversion Strategies

## Requirement to separate



Fines	
Fail to separate waste	\$500
Fail to separate waste (floor trailer)	\$1,000

# Diversion Strategies Transfer Station



## Accepted

- Asphalt shingles
- Wood
- Rigid plastics
- Mattresses
- Yard and garden waste
- Specific invasives

# Diversion Strategies Transfer Station



## Asphalt shingles

- Single/multiple layers
- Torch on roofing
- Roll on roofing

# Diversion Strategies Transfer Station



## Wood

### Clean wood

- Pallets
- Crating
- Off-cuts

### Treated wood

- Painted
- Stained

# Diversion Strategies Transfer Station



## Rigid plastic

- Various resins types are accepted
- No metal, chemicals, or residual fuel

# Diversion Strategies Transfer Station



## Mattresses

- Wood: ground and shipped to end users
- Metal springs: recycled
- Textiles: sent to the active face

# Diversion Strategies Transfer Station



## Yard/garden waste

- Ground and hauled to a local farm

# Diversion Strategies Transfer Station



## Invasives

- blackberry
- ivy
- Scotch broom

# Results Diversion

Material	Annual target (t)	Diversion in first year of operation
Asphalt shingles	9,000	7,600
Clean wood	5,500	1,700
Treated wood	22,000	17,000
Rigid plastics	3,000*	190**
Mattresses	280 (2024 tonnage)	280
Yard and garden waste	2,250 (2024 tonnage)	2,250
Invasives	N/A	84

\*Based on Solid Waste Composition Study

\*\*Forecast based on initial trial

# Next Steps

- Issue RFP for new operations contract
- Look for other diversion options  
e.g., carpet and underlay
- Move materials up the hierarchy  
e.g., salvageable lumber
- Reduce GHG emissions  
e.g., haul/process materials closer to MDTs



# Any questions?



Contact information:  
Niki Roberts  
E: [nroberts@crd.bc.ca](mailto:nroberts@crd.bc.ca)  
T: 250.360.3219