

# Nature Outings and Events

For Nature Lovers of All Ages

June, July & August 2026

## Summer 2026

Try to arrive 10 minutes beforehand. Outings that require registration or fees are noted in the listing. Age recommendations are based on park terrain and program content.

**Legend**  
**Drop-in Event** - Come by anytime between the hours that the event is offered.  
**Guided Walks** - Have a casual pace with interpretive stops.  
**Guided Hikes (Moderate)** - Have occasional interpretive stops. Trails may be uneven and slippery with steep sections. The pace of the hike is set according to the needs of the group.  
**Self-guided Walks** - Follow interpretive signs at your own pace.  
**User-friendly** - Events and outings on these trails are suitable for many abilities. Check descriptions for personal suitability.  
**Extreme Weather** - Programs run rain or shine. In the event of air quality or wind warning, a program may be cancelled. If you suspect a program may be cancelled, call 250.360.3656 to hear a recorded message confirming the cancellation.



Elk/Beaver Lake Regional Park

## CRD Regional Parks Nature Centres



There is a wonderful world of natural and cultural history to explore at our Nature Centres. CRD Regional Parks staff and volunteer naturalists can answer your questions and point you in the right direction on the trails.

**Beaver Lake Nature Centre** (Beaver Beach off Elk Lake Drive in Saanich)  
Open in summer - Fridays, Saturdays and Sundays, 1-4pm. The Nature Centre is wheelchair accessible.

**Francis/King Nature Centre** (Munn Road in Saanich)  
Open year-round - Saturdays, Sundays, holiday Mondays, 10am-4pm. The Nature Centre and the Elsie King Trail are wheelchair accessible.



Francis/King Regional Park

## What You Need to Know

### Legend

**Youth & Adults** **Adults only**

**Drop-in Event** - Come by anytime between the hours that the event is offered.  
**Guided Walks** - Have a casual pace with interpretive stops.  
**Guided Hikes (Moderate)** - Have occasional interpretive stops. Trails may be uneven and slippery with steep sections. The pace of the hike is set according to the needs of the group.  
**Self-guided Walks** - Follow interpretive signs at your own pace.  
**User-friendly** - Events and outings on these trails are suitable for many abilities. Check descriptions for personal suitability.  
**Extreme Weather** - Programs run rain or shine. In the event of air quality or wind warning, a program may be cancelled. If you suspect a program may be cancelled, call 250.360.3656 to hear a recorded message confirming the cancellation.

**Accessibility**  
We offer programs for a variety of ages and abilities. Brief trail descriptions can be found under each program in the brochure. For more detailed accessibility information, please visit each program's description on our website: [www.crd.ca/parks-events](http://www.crd.ca/parks-events)



Elk/Beaver Lake Regional Park

## What You Need to Know

### What to Bring & How to Dress

Carry a day pack with drinking water, a hat, extra clothes and a small snack (or lunch for longer outings). Please wear sturdy footwear and dress for the weather.

### Pets

Please leave your animal friends at home. We like pets too. However, their presence can be disruptive. Guide and service animals are, of course, welcome.

### Feedback

Tell us about your experience by taking the short online survey at [www.crd.ca/parks-events](http://www.crd.ca/parks-events). Your feedback is important to us to monitor and improve our programming.

### Register Online

Some programs may require pre-registration. The CRD's secure online registration site allows you to browse and pre-register immediately for a nature outing.

1. Browse nature outings
2. Select an outing
3. Create an account
4. Select a credit card payment option (for paid programs only - VISA or MasterCard)
5. Complete your registration

Once registration is complete, a receipt (if applicable) and confirmation will be emailed to you.

[www.crd.ca/parks-events](http://www.crd.ca/parks-events)



Island View Beach Regional Park

## Respectful Exploration in Regional Parks

Here's what you can do to keep our forests, beaches, and shorelines in regional parks strong and healthy!

- Stay on designated trails to protect plants and animals.
- Keep your dog under control, in sight and on a leash where required. Remember to pick up your dog's droppings and take them to the trash.
- Do not take anything from the park, including plants, animals and other natural materials. Plants and animals rely on these materials for food, shelter and habitat.
- Keep your parks clean. Help by picking up litter. Leave no trace and pack out your trash.
- Explore carefully along the beach. Watch your step and step only on bare rocks or sand.
- Use your shovels and buckets to make sandcastles, not to collect crabs and other creatures.
- Observe creatures behaving naturally under rocks on the beach by: Lifting, Looking and Lowering.
- Remember, dogs are not permitted to stay in beach and picnic areas between June 1 and September 15.

We can all be caretakers of the forests and beaches, as local First Nations have been for thousands of years. First Peoples believe that all living things should be respected, from insects to eagles, from bees to bears, and from cougars to crabs. As you explore, please travel lightly on these lands and be respectful of the cultures and ecosystems that depend on them.



Witty's Lagoon Regional Park

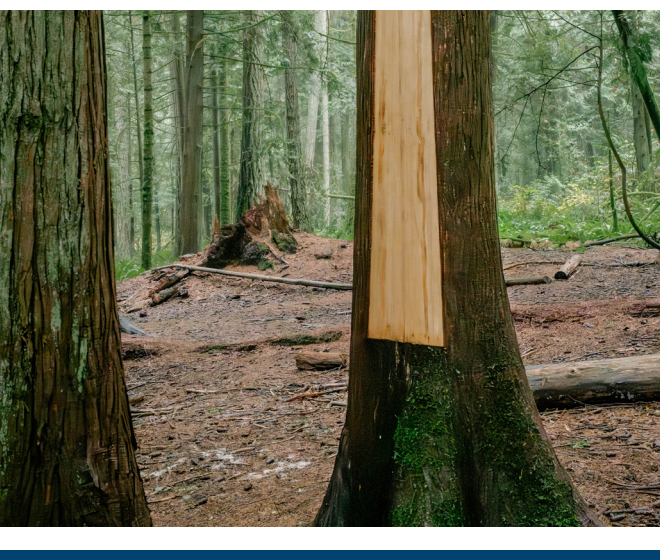
## Exploring Indigenous Perspectives



### Is your organization interested in a private 'Exploring Indigenous Perspectives' walk?

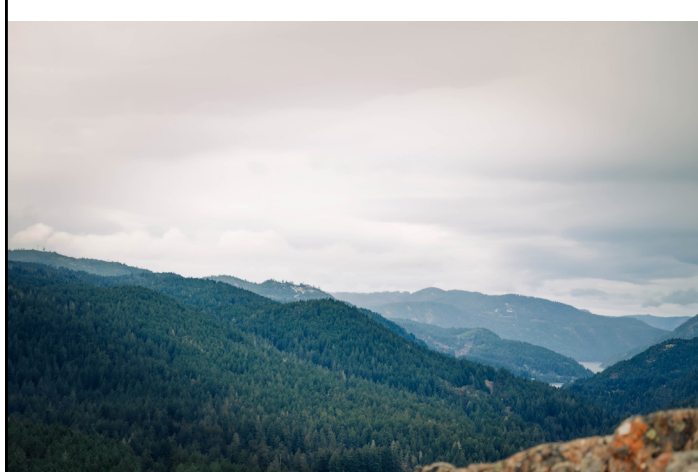
With CRD Regional Parks Indigenous cultural programmer, Leslie McGarry, your group will discover a human history spanning thousands of years. We invite you to learn how First Peoples respect, appreciate and celebrate the plants, animals and seasons. Contact us for more information and pricing:

Tel: 250.478.3344 | E: [crdparks@crd.bc.ca](mailto:crdparks@crd.bc.ca)



## About CRD Regional Parks

The Capital Regional District protects and manages more than 13,300 hectares of spectacular and accessible natural areas in 34 regional parks on southern Vancouver Island and the Gulf Islands. Regional parks protect and restore biodiversity, offer a range of compatible outdoor recreation and education opportunities, and provide accessible, joyful connections with the natural world.



The CRD boundaries span the territories of several First Nations, whose ancestors have been caretakers of the land since time immemorial. The CRD acknowledges the historic and ongoing cultural significance of these lands that provide important food, medicine and spiritual places for these nations. As you explore, please travel lightly on these lands and be respectful of the cultures and ecosystems that depend on them.

Please take one, share with a friend and recycle.

Download a PDF brochure at [www.crd.ca/parks-events](http://www.crd.ca/parks-events).

### Connect With Us

- Capital Regional District
- CRDWebsite
- @crd\_bc



## Summer at a Glance

### June 2026

DATE	EVENT & LOCATION	Icons
Sat 6	Marine Birds of Island View Beach (Guided Walk) Island View Beach	🦋 🦋
Fri 12	Winging it with Bats and HAT (Guided Walk) Elk/Beaver Lake	🦋 🦋
Sat 13	Wildly Diverse (Guided Walk) Elk/Beaver Lake	🦋 🦋
Sun 14	Road Trip to Crab-tastic! (Guided Walk) Island View Beach	🦋 🦋
Sat 20	Exploring Indigenous Perspectives (Guided Walk) East Sooke	🦋 🦋
Sat 27	Happy Herons (Guided Walk) Island View Beach	🦋 🦋
Sun 28	Beginner Birding Basics (Self-guided Walk) Island View Beach	🦋 🦋



Happy Herons

### July 2026

DATE	EVENT & LOCATION	Icons
Sat 4	The Secret Lives of Wolves (Guided Walk) Witty's Lagoon	🦋 🦋
Tues 7	What's the Deal with Seals? (Self-guided Walk) Witty's Lagoon	🦋 🦋
Sat 11	Hike the Coast! (Guided Adult Hike) East Sooke	🦋 🦋
Sun 12	Road Trip to Mystery Creature of the Bay (Guided Walk) Coles Bay	🦋 🦋
Wed 15	The Beach Rocks! (Guided Walk) Island View Beach	🦋 🦋
Wed 15	StoryWalk™ Wednesday (Self-guided Walk) Witty's Lagoon	🦋 🦋
Fri 17	Winging it with Bats and HAT (Guided Walk) Elk/Beaver Lake	🦋 🦋
Sat 18	Exploring Indigenous Perspectives at the Beach (Self-guided Walk) Witty's Lagoon	🦋 🦋
Sun 19	Tide Tickers (Guided Walk) Island View Beach	🦋 🦋
Thurs 23	Exploring Indigenous Perspectives (Guided Walk) Devonian	🦋 🦋
Sat 25	What's the Deal with Seals? (Self-guided Walk) Witty's Lagoon	🦋 🦋
Wed 29	Island View and You (Drop-in Event) Island View Beach	🦋 🦋

### Saturday, July 11 | 10am-1pm

**Hike the Coast! (Guided Adult Hike) - 18 years+ East Sooke Regional Park (East Sooke)**  
Join CRD Regional Parks naturalists to hike a small section of one of Canada's premier day hikes, East Sooke's Coast Trail. Enjoy ocean breezes, great views, and lush coastal forests on this moderately challenging hike.  
**There is no fee for this program but you must pre-register as space is limited. Visit [www.crd.ca/parks-events](http://www.crd.ca/parks-events).**  
Trail description: 4km; compact soil with roots and rocks; steep incline.

### Sunday, July 12 | 9:30am-1pm

**Road Trip to Mystery Creature of the Bay (Guided Walk) - All Ages Coles Bay Regional Park (North Saanich)**  
Catch a ride on the City of Victoria's Recreation bus and then join a CRD Regional Parks naturalist to solve the clues along the trail to discover who the mystery creature is. We'll learn fascinating facts and enjoy the beauty of Coles Bay along the way. The start and end time of this program includes time for transportation.  
**Be prepared to get your feet wet; bring sandals or beach shoes.**  
\$16/person program fee covers the cost of roundtrip transportation from Crystal Pool & Fitness Centre. You must pre-register as space is limited.  
Visit [www.victoria.ca/registration](http://www.victoria.ca/registration) or call 250-361-0732.  
Trail description: 300m; gravel surface and rocky beach; slight incline.

### Wednesday, July 15 | 10-11:30am

**The Beach Rocks! (Guided Walk) - All Ages Island View Beach Regional Park (Central Saanich)**  
The tide is out! Join a CRD Regional Parks naturalist and get a glimpse of the creatures that live beneath the rocks. We'll observe and explore their homes gently and respectfully, learning ways to be kind to the animals that call the beach home.  
**Be prepared to get your feet wet; bring sandals or beach shoes.**  
Meeting place: The picnic shelter off Homathko Drive.  
Trail description: 800m; driftwood and rocky beach with patches of sand; no incline.

### Thursday, August 13 | 10am-1pm

**Slimthy, Slimy, & Scaly (Drop-in Event) - All Ages Elk/Beaver Lake Regional Park (Saanich)**  
Snakes, reptiles, amphibians, oh my! Join CRD Regional Parks naturalists, Indigenous cultural programmer, and special guest organizations for exhibits, displays, and activities all about some of our sssslithy, sssslimy, and sssscally friends. No live creatures will be present except for what might be out and about in the park! Guided walks will be offered throughout the event and there will be something for everyone to enjoy.  
Meeting place: Drop by anytime between 10am and 1pm near the Beaver Lake Picnic Shelter at the Filter Beds parking lot.  
**BC Transit #70, #71, #72 or #75**  
Trail description: 100m; concrete path; slight incline; wheelchair accessible and stroller friendly.



### Slimthy, Slimy, & Scaly

Drop-in Event - All Ages

### August 2026

DATE	EVENT & LOCATION	Icons
Sat 1	Exploring Indigenous Perspectives through Storytelling (Guided Walk) Francis/King	🦋 🦋
Sun 2	Glory of the Understory (Self-guided Walk) Devonian	🦋 🦋
Thurs 6	What's the Deal with Seals? (Self-guided Walk) Island View Beach	🦋 🦋
Sat 8	Summer Birds of Witty's Lagoon (Guided Walk) Witty's Lagoon	🦋 🦋
Thurs 13	Slimthy, Slimy, & Scaly (Drop-in Event) Elk/Beaver Lake	🦋 🦋
Sat 15	Exploring Indigenous Perspectives at the Beach (Guided Walk) East Sooke	🦋 🦋
Sun 16	Brilliant Butterflies (Guided Walk) Elk/Beaver Lake	🦋 🦋
Wed 19	StoryWalk™ Wednesday (Self-guided Walk) Francis/King	🦋 🦋
Fri 21	Marvelous Matheson (Guided Adult Hike) Matheson Lake	🦋 🦋
Sat 22	Road Trip to Exploring Indigenous Perspectives (Guided Walk) Horth Hill	🦋 🦋
Tues 25	Turtle Tales with HAT (Guided Walk) Elk/Beaver Lake	🦋 🦋
Thurs 27	Crab-tastic! (Guided Walk) Island View Beach	🦋 🦋
Sun 30	A Bear's Perspective (Self-guided Walk) Horth Hill	🦋 🦋

### Wednesday, July 15 | 6-7:30pm

**StoryWalk™ Wednesday (Self-guided Walk) - All Ages Witty's Lagoon Regional Park (Metchosin)**  
Get outside and experience a nature walk while stopping to enjoy an illustrated children's book - *Be A Good Ancestor* by Leona Prince and Gabrielle Prince. The CRD Regional Parks Indigenous cultural programmer will be there to bring the story to life. StoryWalks™ are hosted by West Shore Parks & Recreation. Check [wspr.ca](http://wspr.ca) for more StoryWalk™ Wednesdays this summer.  
Meeting place: Drop by anytime between 6 and 7:30pm. The walk begins at the main parking lot off Metchosin Road.  
**BC Transit #54 or #55**  
Trail description: 800m one way; gravel and soil surface; steep incline.

### Friday, July 17 | 8-9:30pm

**Winging it with Bats and HAT (Guided Walk) - All Ages Elk/Beaver Lake Regional Park (Saanich)**  
Join a CRD Regional Parks naturalists and the Habitat Acquisition Trust on a walk to explore the wonderful world of bats. Where do bats live? What do they eat? Participate in activities designed to help you learn more about the world's only true flying mammals. Hopefully we will see bats in action as they emerge at dusk and swoop through the air feeding on flying insects.  
Meeting place: The Beaver Lake Picnic Shelter at the Filter Beds parking lot.  
**BC Transit #70, #71, #72 or #75**  
Trail description: 1km walk; variable trail surface; slight incline.

### Saturday, July 18 | 10-11:30am

**Exploring Indigenous Perspectives at the Beach (Guided Walk) - All Ages Witty's Lagoon Regional Park (Metchosin)**  
Join CRD Regional Parks Indigenous cultural programmer Leslie McGarry for a beach walk at Witty's Lagoon Regional Park and discover a human history spanning thousands of years. Learn about the cultural significance of plants, animals and the seasons and how First Peoples deeply respect, appreciate and celebrate gifts from forests, rivers, beaches and the sea.  
**Be prepared to get your feet wet; bring sandals or beach shoes.**  
Meeting place: Enter the park at the main entrance off Metchosin Road. Meet at the Witty's Beach kiosk at the end of the Beach Trail. Allow 20 minutes to walk from the parking lot to the beach kiosk.  
**BC Transit #54 or #55**  
Trail description: 500m guided walk; sandy beach; no incline.

### Saturday, August 15 | 10-11:30am

**Exploring Indigenous Perspectives at the Beach (Guided Walk) - All Ages East Sooke Regional Park (East Sooke)**  
Join CRD Regional Parks Indigenous cultural programmer Leslie McGarry for a beach walk at East Sooke Regional Park and discover a human history spanning thousands of years. Learn about the cultural significance of plants, animals and the seasons and how First Peoples deeply respect, appreciate and celebrate gifts from forests, rivers, beaches and the sea.  
**Be prepared to get your feet wet; bring sandals or beach shoes.**  
Meeting place: The information kiosk at the Aylard Farm parking lot off Becher Bay Road.  
Trail description: 1km walk; variable trail surface; slight incline; no wheelchair or stroller friendly.

### Sunday, August 16 | 10-11:30am

**Brilliant Butterflies (Guided Walk) - All Ages Elk/Beaver Lake Regional Park (Saanich)**  
Come laugh, learn and share your love for butterflies at this interactive nature program. Join a CRD Regional Parks naturalist to discover the surprising wonders of a butterfly's habitat, life cycle and daily activities.  
Meeting place: The nature centre at the Beaver Beach parking lot.  
**BC Transit #70, #71, #72 or #75**  
Trail description: 1km walk; variable trail surface; slight incline; no wheelchair or stroller friendly.

### Wednesday, August 19 | 6-7:30pm

**StoryWalk™ Wednesday (Self-guided Walk) - All Ages Francis/King Regional Park (Saanich)**  
Get outside and experience a nature walk along the accessible Elsie King Trail while stopping to enjoy an illustrated children's book - *Woodpecker Wham!* by April Pulley Sayre. A CRD Regional Parks naturalist will be there to bring the story to life. StoryWalks™ are hosted by West Shore Parks & Recreation. Check [wspr.ca](http://wspr.ca) for more StoryWalk™ Wednesdays this summer.  
Meeting place: The Francis/King Nature Centre off Munn Road.  
Trail description: 800m; boardwalk and compact surface; slight incline; wheelchair accessible and stroller friendly.

## June

### Saturday, June 6 | 10am-12pm

**Marine Birds of Island View Beach (Guided Walk) - 8 years+ Island View Beach Regional Park (Central Saanich)**  
Come out to celebrate Ocean Week and learn all about marine birds! Join expert birder Geoffrey Newell and a CRD Regional Parks naturalist on a guided walk along the beach trail to learn some basic identification, life history and fun facts about common birds that you might see on the water.  
Meeting place: The picnic shelter off Homathko Drive.  
Trail description: 800m; driftwood and rocky beach with patches of sand; no incline.

### Friday, June 12 | 8-9:30pm

**Winging it with Bats and HAT (Guided Walk) - All Ages Elk/Beaver Lake Regional Park (Saanich)**  
Join CRD Regional Parks naturalists and the Habitat Acquisition Trust on a walk to explore the wonderful world of bats. Where do bats live? What do they eat? Participate in activities designed to help you learn more about the world's only true flying mammals. Hopefully we will see bats in action as they emerge at dusk and swoop through the air feeding on flying insects.  
Meeting place: The Beaver Lake Picnic Shelter at the Filter Beds parking lot.  
**BC Transit #70, #71, #72 or #75**  
Trail description: 1km walk; variable trail surface; slight incline.



Marine Birds of Island View Beach

### Saturday, June 13 | 1:30-3pm

**Wildly Diverse (Guided Walk) - All Ages Elk/Beaver Lake Regional Park (Saanich)**  
Celebrate Pride with a CRD Regional Parks naturalist and Indigenous cultural programmer on a walk to explore diversity in nature alongside conservationist and wildlife filmmaker Connel Bradwell. From fungi, slugs, turtles, bats and many more, we'll discover how nature can help us question ideas of conformity. We'll explore both the natural history and Indigenous cultural history of walking in two worlds.  
Meeting place: The Beaver Lake Picnic Shelter at the Filter Beds parking lot.  
**BC Transit #70, #71, #72 or #75**  
Trail description: 800m; compact surface; slight incline; wheelchair accessible.

### Sunday, June 14 | 9:30am-1pm

**Road Trip to Crab-tastic! (Guided Walk) - All Ages Island View Beach Regional Park (Central Saanich)**  
Catch a ride on the City of Victoria's Recreation bus and then join a CRD Regional Parks naturalist for some intertidal observation. Red crabs, green crabs, purple crabs, hermit crabs - this beach has them all! Meet some of the crabs and their cousins that make Island View Beach their special home and how we'll explore with kindness. **Be prepared to get your feet wet. (Bring sandals or beach shoes.)**  
\$16/person program fee covers the cost of roundtrip transportation from Crystal Pool & Fitness Centre. You must pre-register as space is limited.  
Visit [www.victoria.ca/registration](http://www.victoria.ca/registration) or call 250-361-0732.  
Trail description: 800m; driftwood and rocky beach with patches of sand; no incline.

### Saturday, June 20 | 1:30-3:00pm

**Exploring Indigenous Perspectives (Guided Walk) - All Ages East Sooke Regional Park (East Sooke)**  
June is National Indigenous People's Month - celebrate with CRD Regional Parks Indigenous cultural programmer Leslie McGarry by joining a walk to discover a human history spanning thousands of years. Learn about the cultural significance of plants, animals and the seasons and how First Peoples deeply respect, appreciate and celebrate gifts from forests, rivers, lakes and the sea.  
Meeting place: The information kiosk at the Aylard Farm parking lot off Becher Bay Road.  
Trail description: 1km walk; variable trail surface; slight incline.



Beginner Birding Basics

### Saturday, June 27 | 11am-12pm

**Happy Herons (Guided Walk) - 5 years & under Island View Beach Regional Park (Central Saanich)**  
Scrrrrr! What was that? Join a CRD Regional Parks naturalist to discover what makes great blue herons happy! Enjoy activities, role-play and more to learn about these experts of the air and water. **Be prepared to get your feet wet; bring sandals or beach shoes.**  
Meeting place: The grassy area adjacent to the picnic shelter off Homathko Drive.  
Trail description: 800m; driftwood and rocky beach with patches of sand; no incline.

### Sunday, June 28 | 10am-1pm

**Beginner Birding Basics (Self-guided Walk) - All Ages Island View Beach Regional Park (Central Saanich)**  
Visit CRD Regional Parks naturalists for a self-guided walk all about birding. Follow the panels to learn about what to look and listen for when identifying the birds in the area.  
Meeting place: Drop by anytime between 10am and 1pm. This walk begins near the picnic shelter off Homathko Road.  
Trail description: 1km; compact gravel surface; no incline; wheelchair accessible.

## July

### Saturday, July 4 | 10-11:30am

**The Secret Lives of Wolves (Guided Walk) - All Ages Witty's Lagoon Regional Park (Metchosin)**  
Coastal wolves are elusive predators, playing an important role in the forest and ocean ecosystems of our region. Come join a CRD Regional Parks naturalist and Indigenous cultural programmer to learn more about the natural and cultural history of the coastal wolves of Vancouver Island. We'll explore the importance of wolves in First Nations culture and learn how sea wolves survive on the dynamic coastal landscape.  
Meeting place: Teaching Shelter, off the Lagoon Trail. Park at the main parking lot off Metchosin Road and proceed down the main trail, turning left onto the Lagoon trail. Allow approximately 10 minutes walking time from parking lot.  
**BC Transit #54 or #55**  
Trail description: 800m; gravel and soil surface; steep incline. Not stroller friendly.

### Tuesday, July 7 | 10am-1pm

**What's the Deal with Seals? (Self-guided Walk) - All Ages Witty's Lagoon Regional Park (Metchosin)**  
Have you ever wondered what's the deal with seals? Join a CRD Regional Parks naturalist and Indigenous cultural programmer for a self-guided walk to learn more about the natural and cultural history of seals. Discover the significance of seals in many coastal First Nations cultures and how we can respect these incredible mammals.  
Meeting place: Drop by anytime between 10am and 1pm. This walk begins near the information kiosk at the Tower Point parking lot off Olympic Drive.  
**BC Transit #54 or #55**  
Trail description: 500m; gravel and soil surface; some incline; not stroller or wheelchair friendly.



What's the Deal with Seals?

## August

### Saturday, August 1 | 10-11am

**Exploring Indigenous Perspectives through Storytelling (Guided Walk) - 5 years & under Francis/King Regional Park (Saanich)**  
On this interactive program, we invite participants to roll or stroll with CRD Regional Parks Indigenous cultural programmer Leslie McGarry to explore the cultural significance of birds and animals through a First Peoples lens. The cultural lessons and values shared through the time-honoured tradition of storytelling will amaze participants. We will discover how First Peoples passed down important teachings from their respective territories to upcoming generations.  
Meeting place: The Francis/King Nature Centre off Munn Road.  
Trail description: 800m; boardwalk and compact surface; slight incline; wheelchair accessible and stroller friendly.

### Sunday, August 2 | 10am-1pm

**Glory of the Understory (Self-guided Walk) - All Ages Devonian Regional Park (Metchosin)**  
From the top to the bottom, each layer of the forest offers food and shelter for a variety of wildlife. We invite you to visit a CRD Regional Parks naturalist to learn more about this unique ecosystem and follow along on this self-guided walk.  
Meeting place: The information kiosk at the parking lot off William Head Road.  
**BC Transit #54 or #55**  
Trail description: 1km; compact surface with roots; moderate incline.



Glory of the Understory

### Thursday, August 6 | 10am-1pm

**What's the Deal with Seals? (Self-guided Walk) - All Ages Island View Beach Regional Park (Central Saanich)**  
Have you ever wondered what's the deal with seals? Join a CRD Regional Parks naturalist and Indigenous cultural programmer for a self-guided accessible walk to learn more about the natural and cultural history of seals. Discover the significance of seals in many coastal First Nations cultures and how we can respect these incredible mammals.  
Meeting place: Drop by anytime between 10am and 1pm. This walk begins near the information kiosk at the Tower Point parking lot off Olympic Drive.  
**BC Transit #54 or #55**  
Trail description: 1km; compact gravel surface; no incline; wheelchair accessible and stroller friendly.

### Saturday, August 8 | 10