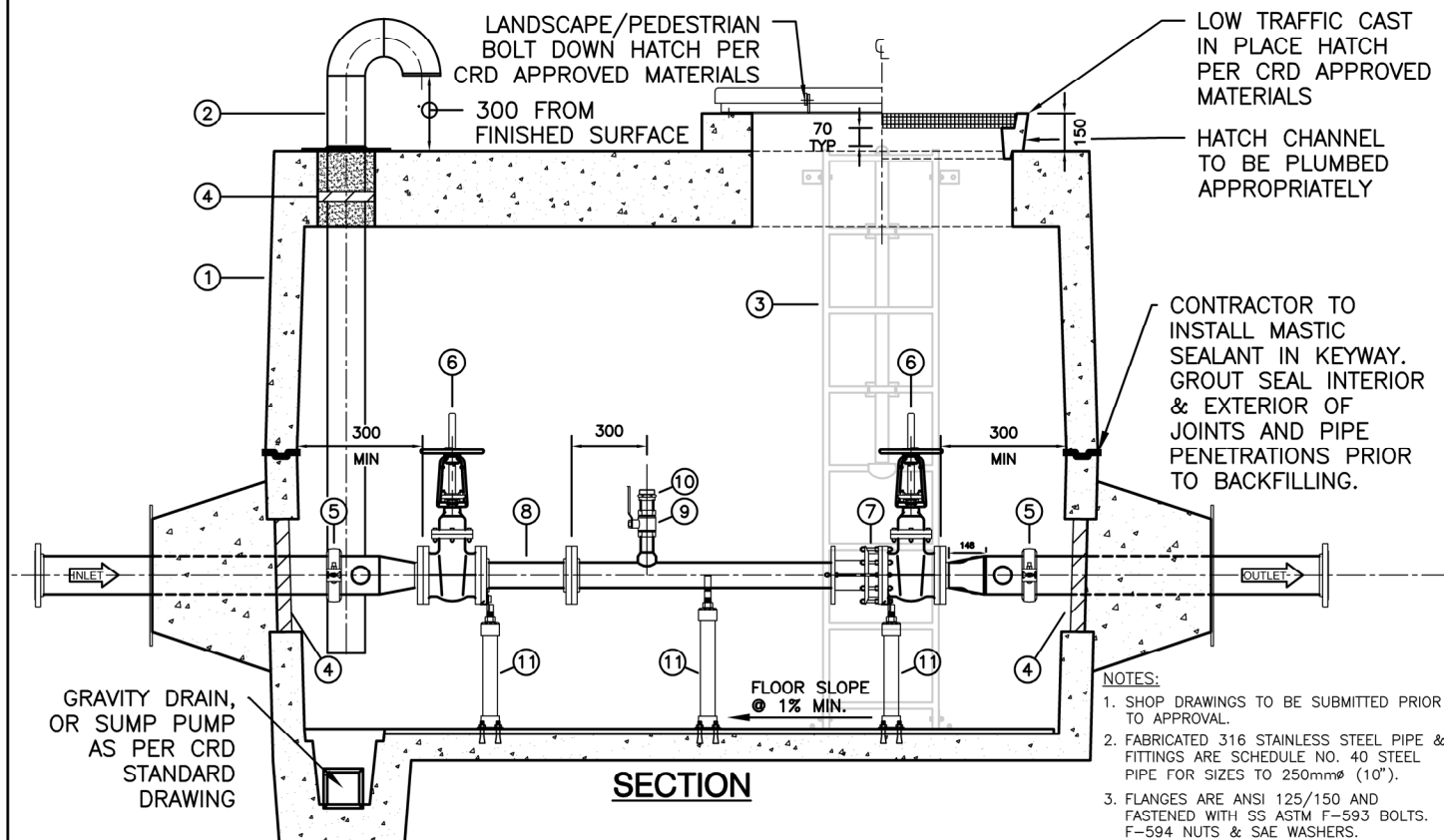


PLAN



SECTION

- NOTES:**
1. SHOP DRAWINGS TO BE SUBMITTED PRIOR TO APPROVAL.
 2. FABRICATED 316 STAINLESS STEEL PIPE & FITTINGS ARE SCHEDULE NO. 40 STEEL PIPE FOR SIZES TO 250mmØ (10").
 3. FLANGES ARE ANSI 125/150 AND FASTENED WITH SS ASTM F-593 BOLTS, F-594 NUTS & SAE WASHERS.
 4. ALL PIPE PICKLED TO ASTM A380.
 5. ALL MEASUREMENTS ARE IN MILLIMETRES UNLESS NOTED.

LIST OF MATERIALS

ITEM	DESCRIPTION	QUA.
①	PRECAST CONCRETE CHAMBER c/w BLACK EXTERIOR COATING TO BE APPROVED BY CRD	1
②	150mmØ (6") VENT PIPE c/w PUDDLE FLANGE, EPOXY GREY AND MESH SCREEN. VENT SUPPORT AS PER MANUFACTURERS RECOMMENDATIONS.	1
③	ALUMINUM LADDER c/w RETRACTABLE SAFETY POST PER CRD APPROVED MATERIALS LIST.	1
④	LINK SEAL ASSEMBLY FOR STEEL PIPE.	3
⑤	STAINLESS STEEL GROOVED PIPE COUPLING.	2
⑥	RHO OS&Y GATE VALVE.	2
⑦	FxF RESTRAINT DISMANTLING JOINT ROMAC DJ400 OR APPROVED EQUAL.	1

ITEM	DESCRIPTION	QUA.
⑧	TEMPORARY SPOOL FOR CRD SUPPLIED METER. SPOOL DIMENSIONS TO BE CONFIRMED.	2
⑨	50mmØ (2") STAINLESS STEEL BALL VALVE.	3
⑩	65mmØ (2.5") BRASS MALE FIRE HOSE ADAPTOR.	1
⑪	ADJUSTABLE GALVANIZED STEEL FLANGE SUPPORT OR APPROVED EQUIVALENT AND SECURED TO FLOOR WITH ANCHOR BOLTS.	2
⑫	BYPASS ASSEMBLY PIPE SUPPORT	2
⑬	19mmØ STAINLESS STEEL BALL VALVE c/w HOSE BIB.	1
⑭	50mmØ (2") STAINLESS STEEL GROOVED PIPE COUPLING.	2
⑮	25mmØ (1") CONNECTION FOR SUMP DRAIN ASSEMBLY c/w PLUG. NOT REQUIRED IF ELECTRIC PUMP INSTALLED	1



Making a difference...together

WATER SERVICE METER CHAMBER

revision date: NOV. 2024 scale: N.T.S.

standard drawing no.:

3.1