

Hartland Landfill Tour Worksheet



3R's (Reduce, Reuse, Recycle)

Answer the questions about Hartland Landfill below.

1. How many landfills are there in the Capital Regional District for municipal waste?

2. What is one difference between a "dump" and an engineered landfill, such as Hartland?

3. Name three items that you can donate or recycle at a drop-off depot:

4. Improper disposal of which common household item(s) can lead to fires at the landfill?

5. How much does the garbage compactor weigh?

6. What year is the currently prepared space expected to be full? Bonus question: How old will you be?

7. What is one thing we do at the active face to prevent birds from eating the garbage?

8. Which 4 material categories account for the largest percentages of waste in the landfill?

9. What is something you saw at the active face that could have been reduced, reused or recycled?

10. Which two by-products from landfilling are managed for environmental impacts?

11. What is another (unofficial) name for leachate?

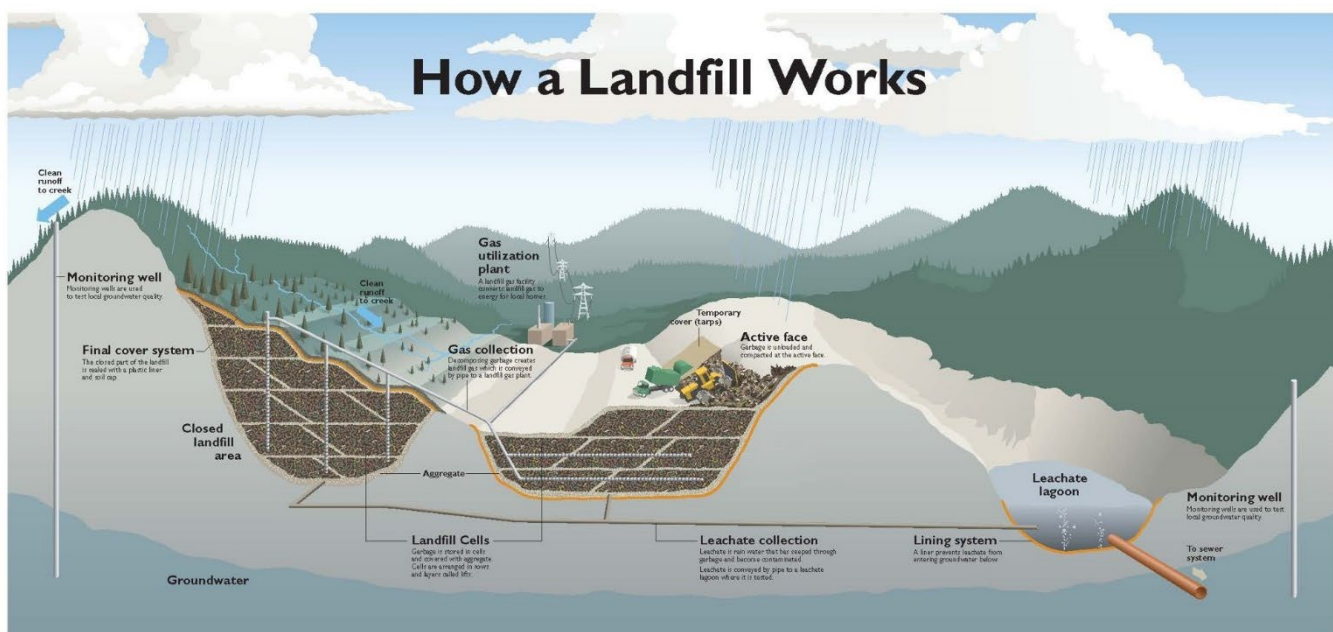
12. When garbage decomposes it produces landfill gas. At Hartland, this gas is captured and

converted into: _____

13. When an area of the landfill is full we close it. What have we done with the closed, Phase 1, area of the landfill? _____

14. What are 3 things you can do to reduce the amount of garbage you create and help Hartland Landfill last longer? _____

15. Are there any questions you had about waste, recycling or landfills that were not answered? _____



Hartland Landfill Tour Worksheet: Answer Key

1. How many landfills are there in the Capital Regional District for municipal waste?

One. Hartland landfill is the only solid waste disposal facility in the Capital Region.

2. What is one difference between a "dump" and an engineered landfill, such as Hartland?

In the simplest terms a dump is a hole in the ground that you put garbage in, no restrictions on what can be thrown away and no environmental monitoring in place. An engineered landfill is designed and managed to minimize environmental impacts (e.g. recycling and reusable items are diverted, household hazardous waste is collected for safe disposal, landfill gas and leachate are captured and monitored, surface water is diverted and tested, etc.).

3. Name three items that you can recycle at a drop-off depot such as the Hartland Public Drop-off Area:

Paint, motor oil, gasoline, batteries, electronics, appliances, light bulbs, paper, cardboard, Styrofoam, plastic bags, metal, glass jars, mixed containers, tires, clothing, bicycles, household hazardous waste, propane tanks etc.

4. Improper disposal of which common household item(s) can lead to fires at the landfill?

Batteries, pool and hot tub chemicals, electronics, household hazardous waste (e.g. gasoline and other flammable liquids), propane tanks etc.

5. How much does the garbage compactor weigh?

37 tonnes, or the equivalent of 37 cars.

6. What year is the currently prepared space expected to be full? Bonus question: How old will you be?

2045. Bonus: Answer = [(2045 - Current Year) + Your Age]

7. What is one thing we do at the active face to prevent birds from eating the garbage?

Fireworks, flares, recordings of predatory calls, and cover garbage with a tarp at the end of each night.

8. Which 4 material categories account for the largest percentages of waste in the landfill?

Wood and wood products (18.9%) • Organics/food scraps (16.7%) • Paper and paperboard (14.2%) • Construction & Demo (13.3%)

9. What is something you saw at the active face that could have been reduced, reused or recycled?

Plastic bag, Styrofoam, toys, desk, chair, electronics, cardboard box, scrap metal etc.

10. Which two by-products from landfilling are managed for environmental impacts?

Leachate and landfill gas (methane + carbon dioxide)

11. What is another (unofficial) name for leachate?

"Garbage tea"

12. When garbage decomposes it produces landfill gas. At Hartland, this gas is captured and converted into:

Renewable Natural Gas

13. When an area of the landfill is full, we close it. What have we done with the closed, Phase 1, area of the landfill?

Capped it with a thick plastic membrane, covered it with a layer of soil taken from on site and have planted over 20,000 native plants. The area now provides habitat to birds, insects, deer, and other wildlife. Landfill gas and leachate are still monitored and collected.

14. What are 3 things you can do to reduce the amount of garbage you create and help Hartland Landfill last longer?

Reduce, Reuse, Recycle: sell and buy used, borrow, donate, rent, buy products with less packaging, make memories and use less stuff, compost, etc.