

Reay Creek Watershed (2011)



RBC
Blue Water
Project™

0 200 400 Metres

Projection: UTM Zone 10 North, NAD 1983



DISCLAIMER

Important This map is for general information purposes only. The Capital Regional District (CRD) makes no representations or warranties regarding the accuracy or completeness of this map or the suitability of the map for any purpose. This map is not for navigation. The CRD will not be liable for any damage, loss or injury resulting from the use of the map or information on the map and the map may be changed by the CRD at any time.

M Municipal Hall

School

Seasonal Creek

Creek

Park

Watershed*

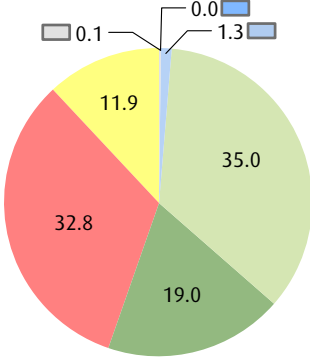
Total Watershed Area: 343.0 ha

* Boundaries are approximate and affected by stormdrain networks

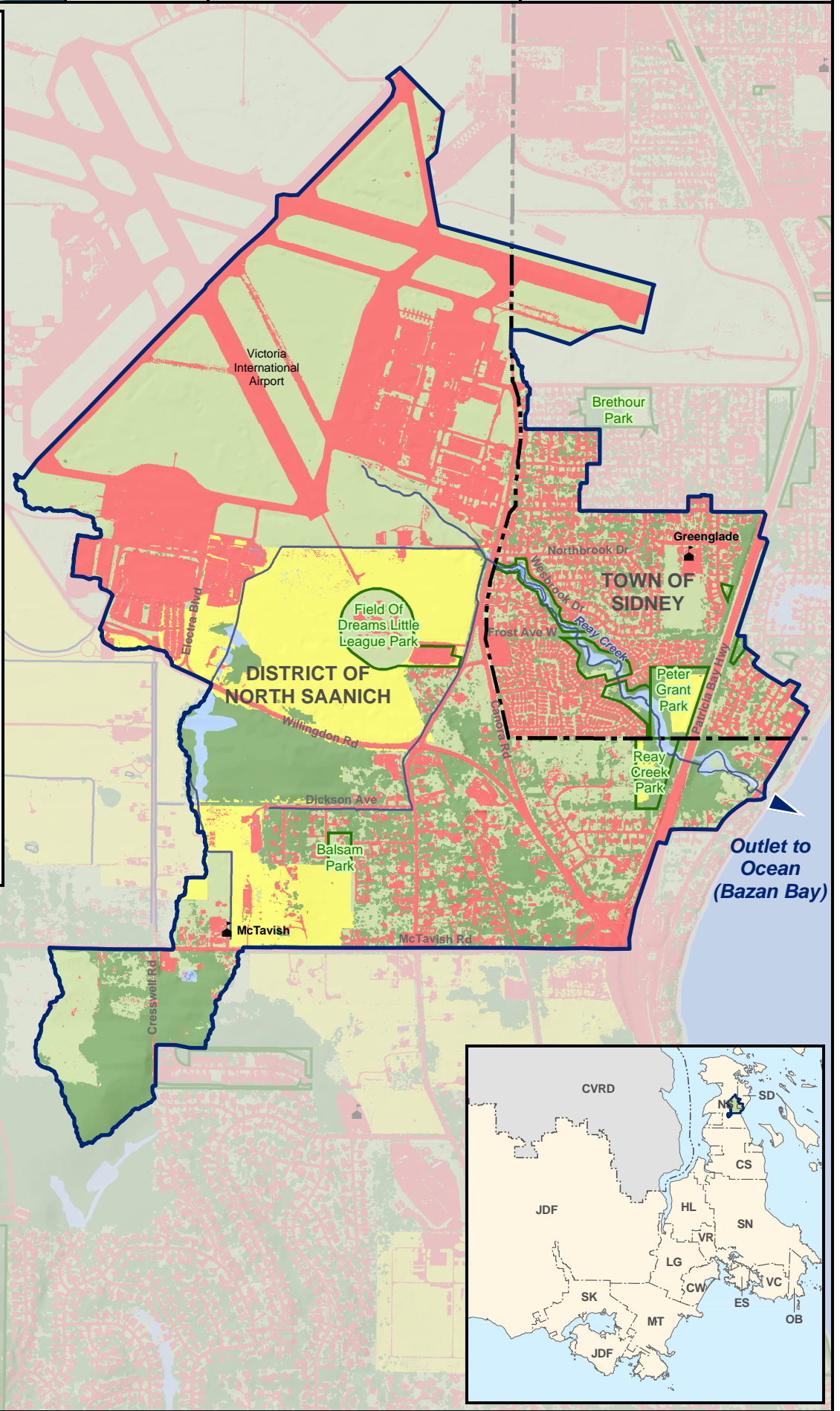
Land Cover (2011)

- Unclassified
- Lake, Pond
- Riparian Area, Seasonal Wetland
- Grass, Shrub, Bare Ground, Exposed Rock
- Tree Cover
- Building, Road, Parking Lot (Impervious Surface)
- Agricultural Field

Land Cover Distribution (%)



2011 Land Cover Mapping
The data set covers the CRD (excluding the Gulf Islands)
Data also available in cover densities
Data is available for 1986, 2005 and 2011
Percentages may not add up to 100 due to rounding



Outlet to Ocean
(Bazan Bay)