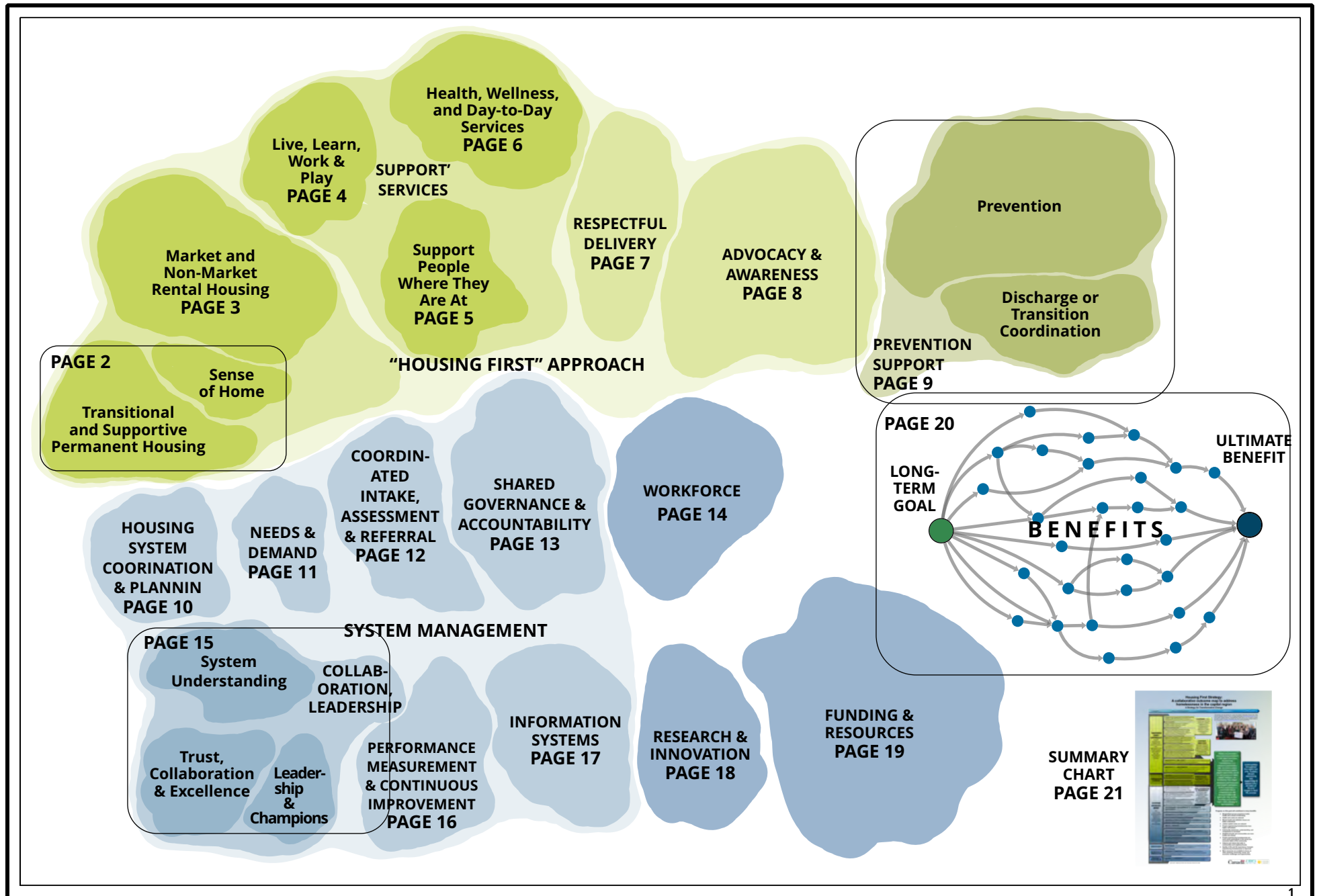


Regional Housing First Strategy

An collaborative outcome map to address homelessness in the capital region

COMPENDIUM OF CAPACITY AREAS

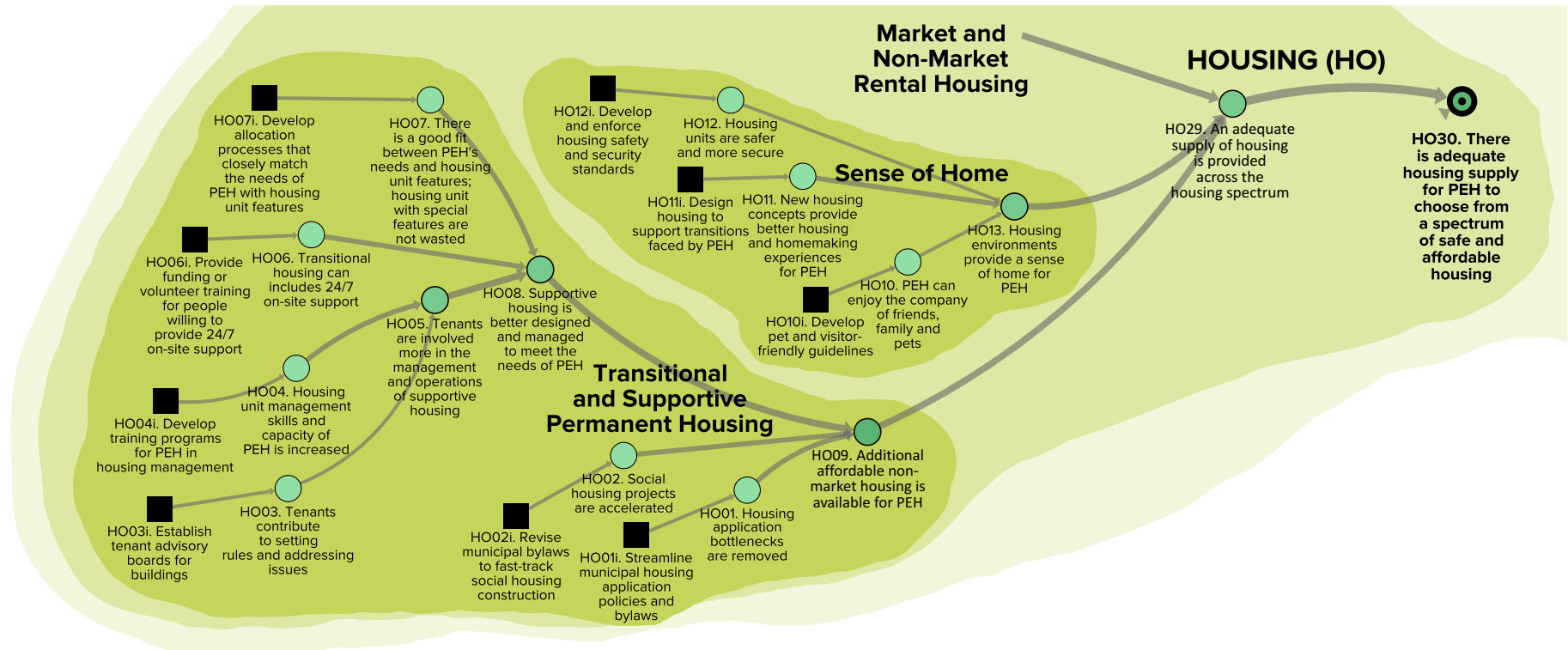


Regional Housing First Strategy
An collaborative outcome map to address homelessness in the capital region

40w x 31t
on wall

HOUSING: Transitional and Supportive Permanent Housing & Sense of Home

Additional affordable non-market housing is available for people experiencing homelessness (HO09) + Housing environments provide a sense of home for people experiencing homelessness (HO13)



Collaborative Outcome Map
developed using
Theory of Change
methodology

Center for Theory of Change
and Kumu online
system mapping
software

Collaborative Outcome Map
co-created by:
Regional Housing First Strategy
& Outcome Map Design Team
Facilitated by:
Yates, Thom & Associates
and R. Keith Jones & Associates
Victoria, BC, Canada
info@yatesandthom.com
keith@rkeithjones.com

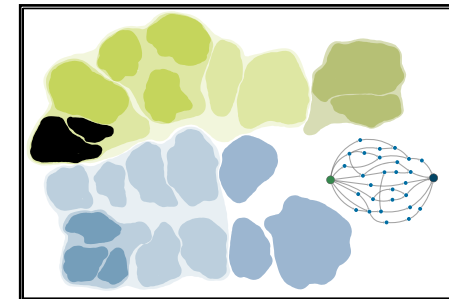
This map can also be made available
in print or digital format.

Legend

- Intervention
- 1st Outcome
- Intermediate outcome
- CAPACITY AREA OUTCOME
- Strategic outcome
- LONG-TERM GOAL
- Benefit (Impact)
- Ultimate Benefit (Impact)
- Causal connection
- Capacity area

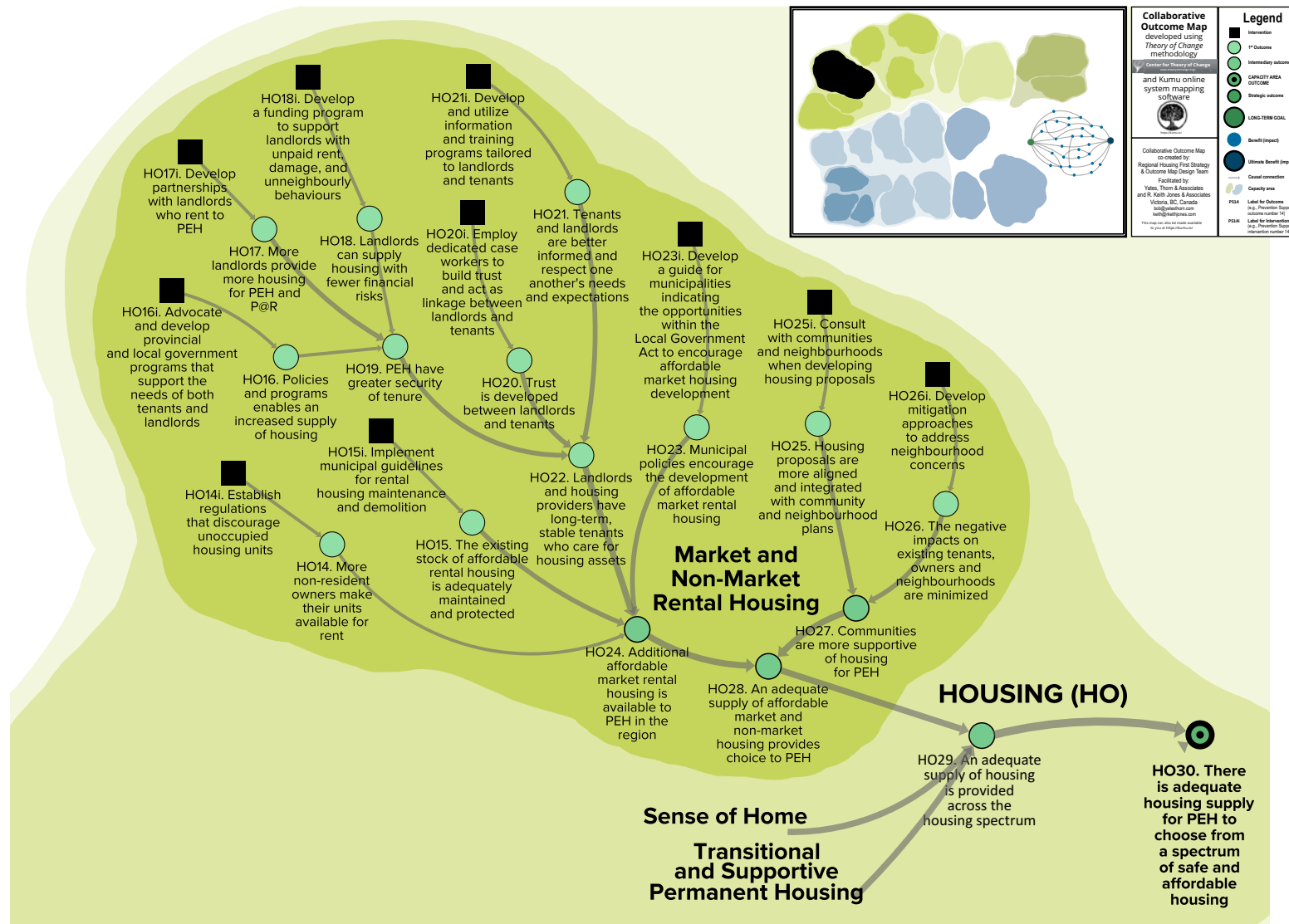
PS14 Label for Outcome
(e.g., Prevention Support
outcome number 14)

PS16 Label for Intervention
(e.g., Prevention Support
intervention number 16)



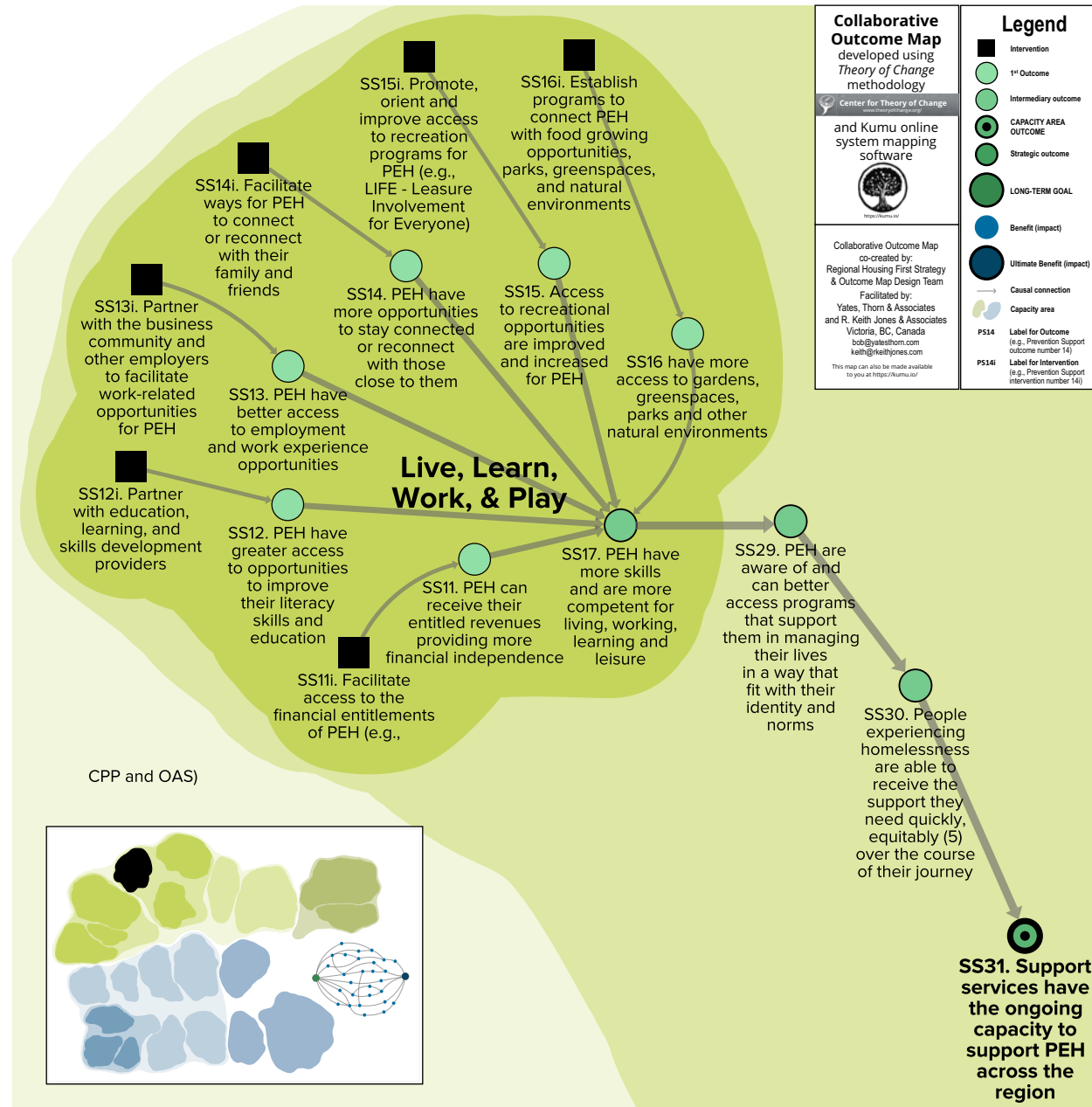
HOUSING: Market and Non-Market Rental Housing

An adequate supply of affordable market and non-market housing provides choice to people experiencing homelessness (HO28)



SUPPORT SERVICES: Live, Learn, Work & Play

People experiencing homelessness have the skills and are more competent for living, working, learning, and leisure (SS17)



SUPPORT SERVICES: Support People Where They Are At

People experiencing homelessness are supported over the course of their care pathway and journey toward realizing their potential (SS10)

Collaborative Outcome Map
developed using
Theory of Change
methodology

Center for Theory of Change

and Kumu online
system mapping
software

Collaborative Outcome Map
co-created by:
Regional Housing First Strategy
& Outcome Map Design Team

Facilitated by:
Yates, Thom & Associates
and R. Keith Jones & Associates
Victoria, BC, Canada
td@yatesthom.com
keith@rkeithjones.com

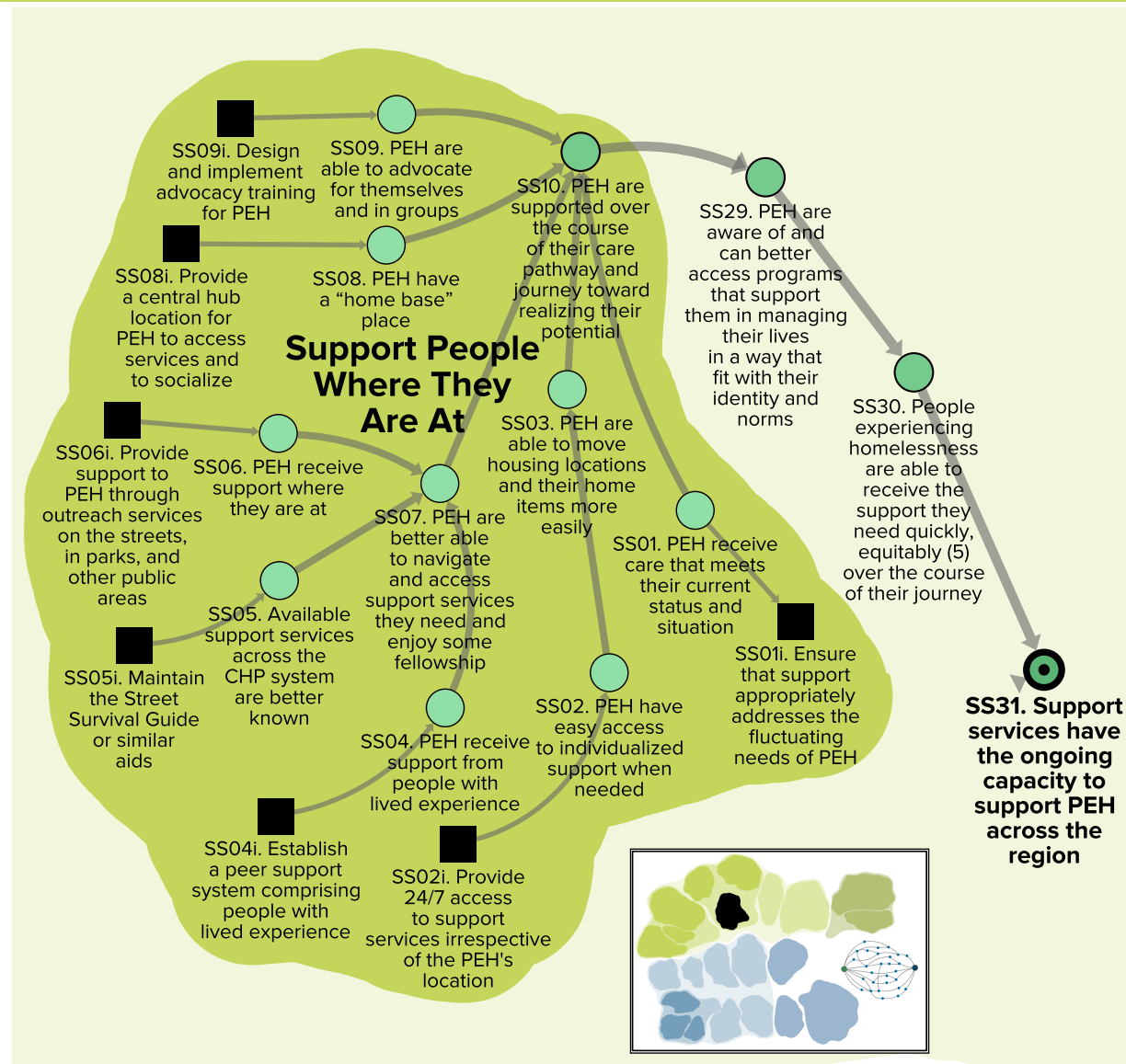
This map can also be made available
to you at <https://thoma.io/>

Legend

- Intervention
- 1st Outcome
- Intermediary outcome
- CAPACITY AREA OUTCOME
- Strategic outcome
- LONG-TERM GOAL
- Benefit (impact)
- Ultimate Benefit (impact)
- Causal connection
- Capacity area

P514 Label for Outcome
(e.g., Prevention Support
outcome number 14)

P514i Label for Intervention
(e.g., Prevention Support
intervention number 14i)



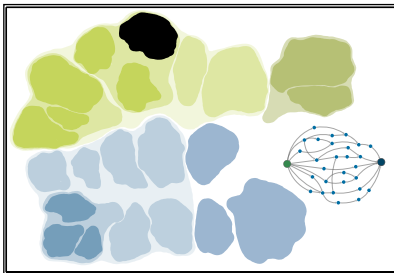
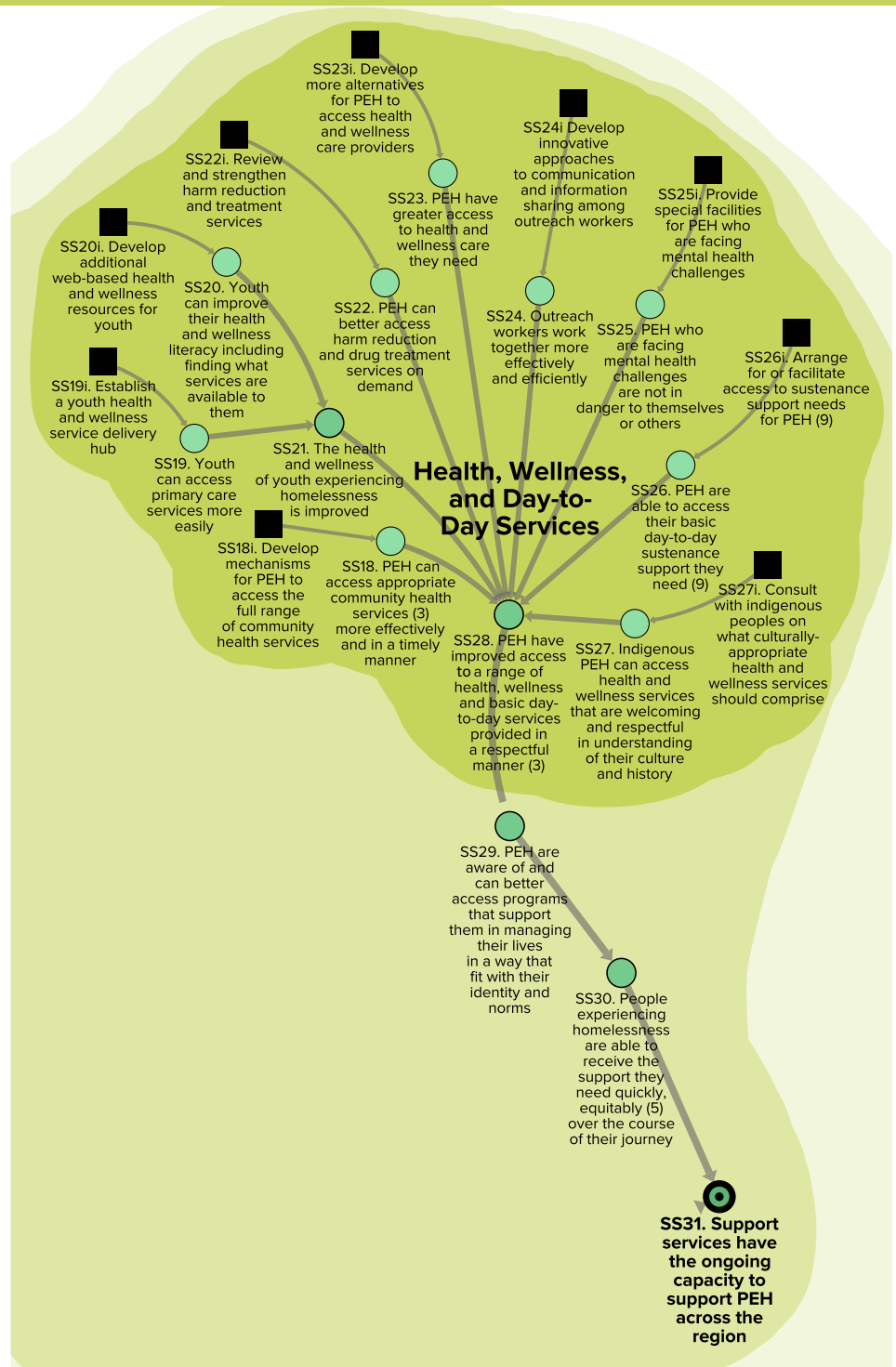
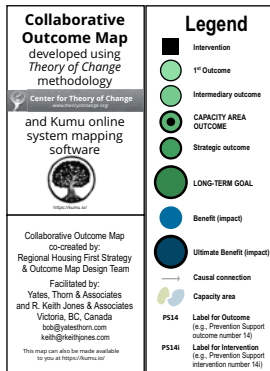
Regional Housing First Strategy

An collaborative outcome map to address homelessness in the capital region

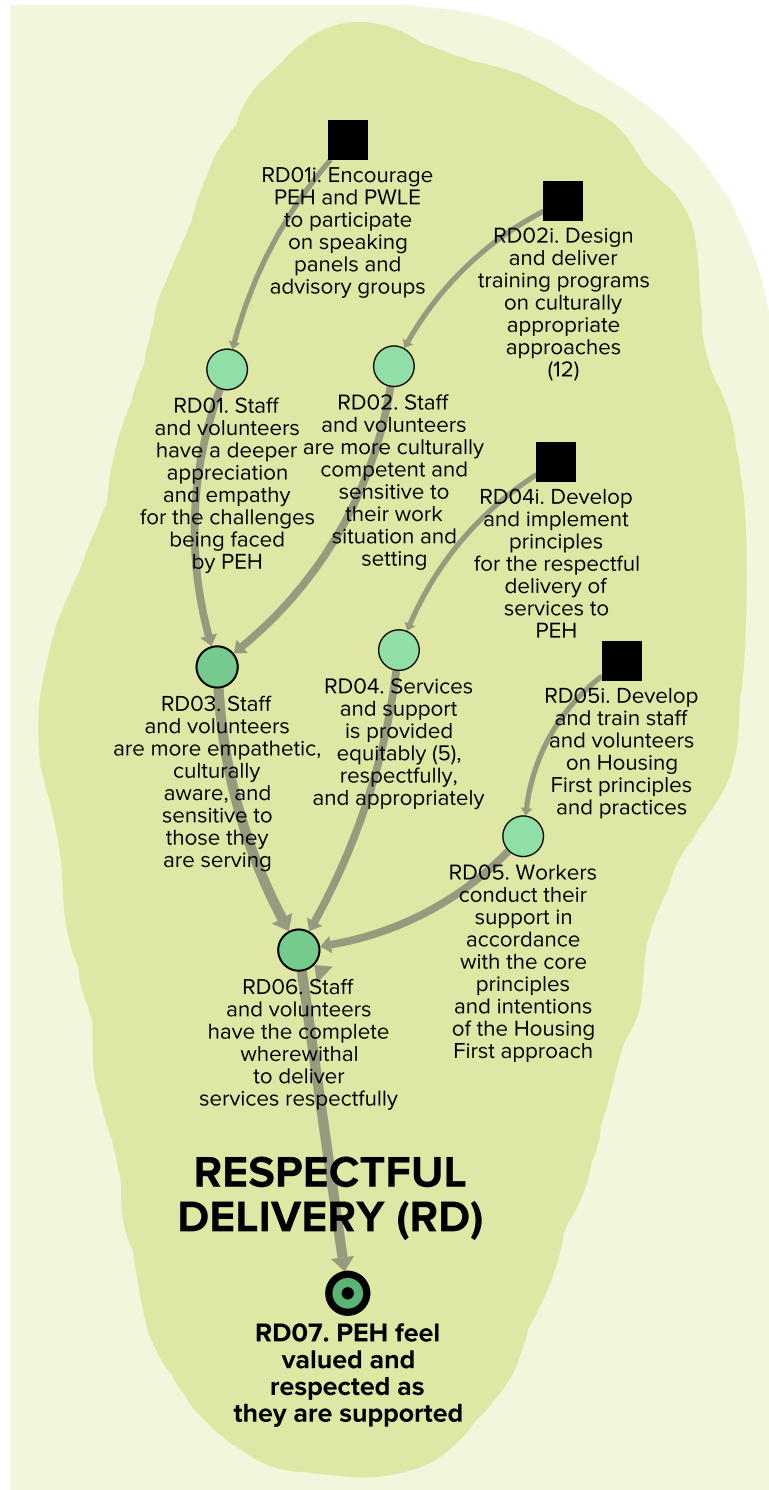
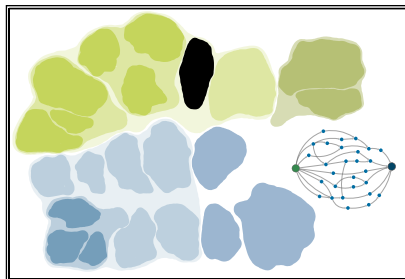
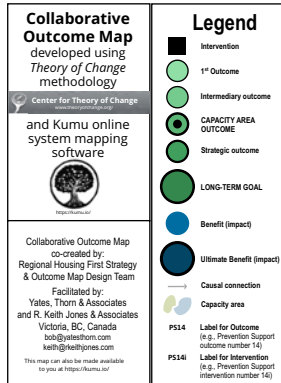
31w x 39t
on 40 x 32 board

SUPPORT SERVICES: Health, Wellness, and Day-to-Day Services

People experiencing homelessness have improved access to a range of health, wellness and basic day-to-day services provided in a respectful manner (SS28)



RESPECTFUL DELIVERY: *People experiencing homelessness feel valued and respected as they are supported*

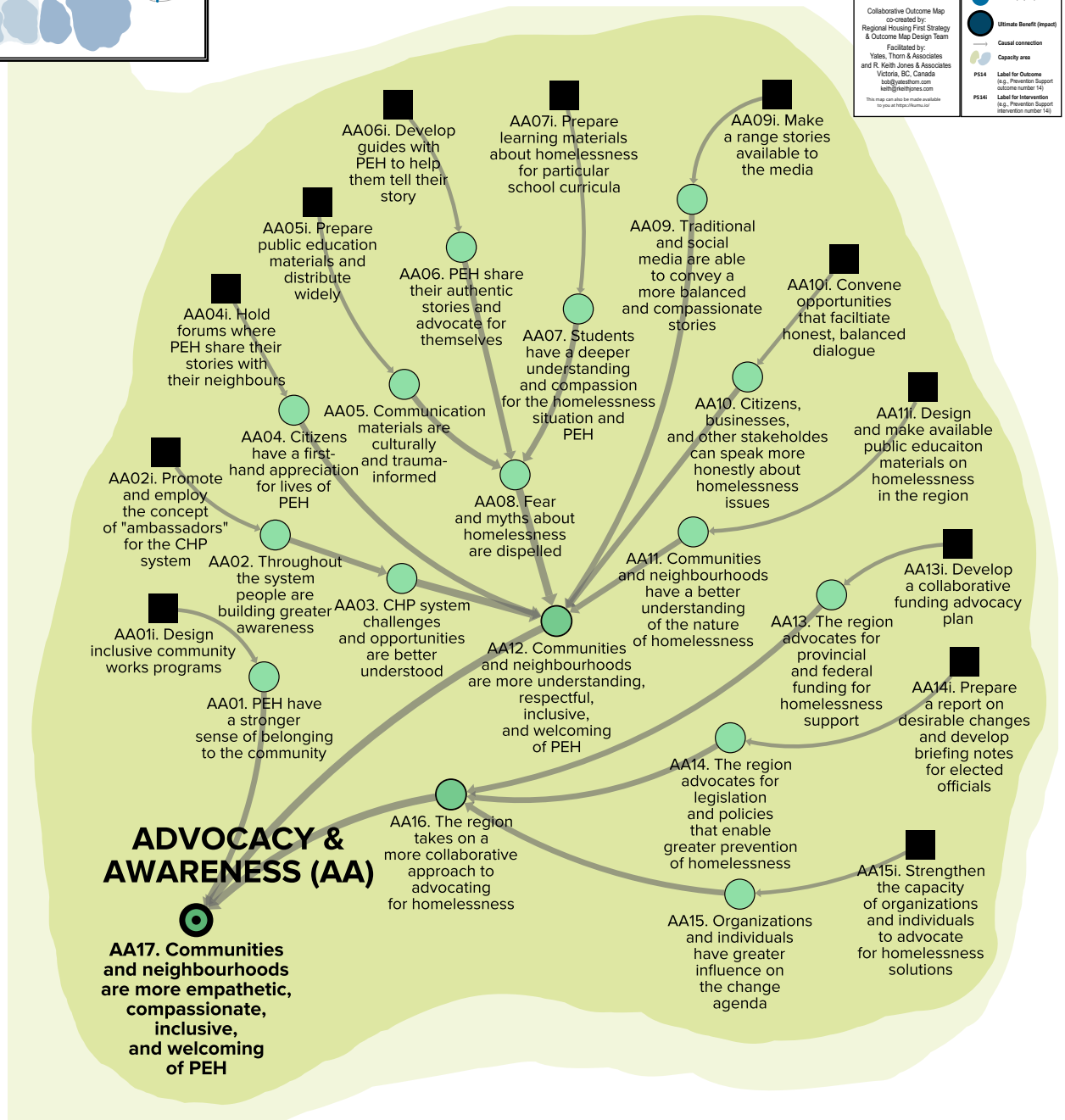
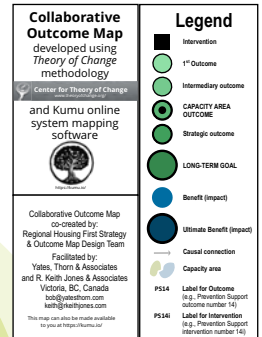
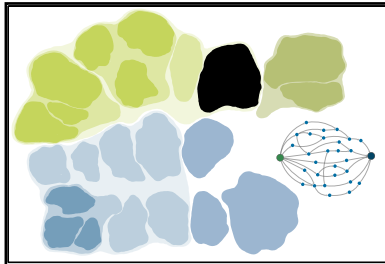


Regional Housing First Strategy

An collaborative outcome map to address homelessness in the capital region

31w x 39t
on wall

ADVOCACY & AWARENESS: *Communities and neighbourhoods are more empathetic, compassionate, inclusive, and welcoming of people experiencing homelessness*



Regional Housing First Strategy
An collaborative outcome map to address homelessness in the capital region


50w x 39t
on 60 x 40 board

PREVENTION SUPPORT: *People are prevented from becoming homeless*

Collaborative Outcome Map
developed using
Theory of Change
methodology

Center for Theory of Change

and Kumu online
system mapping
software



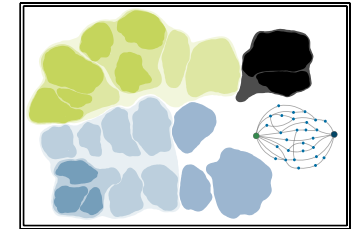
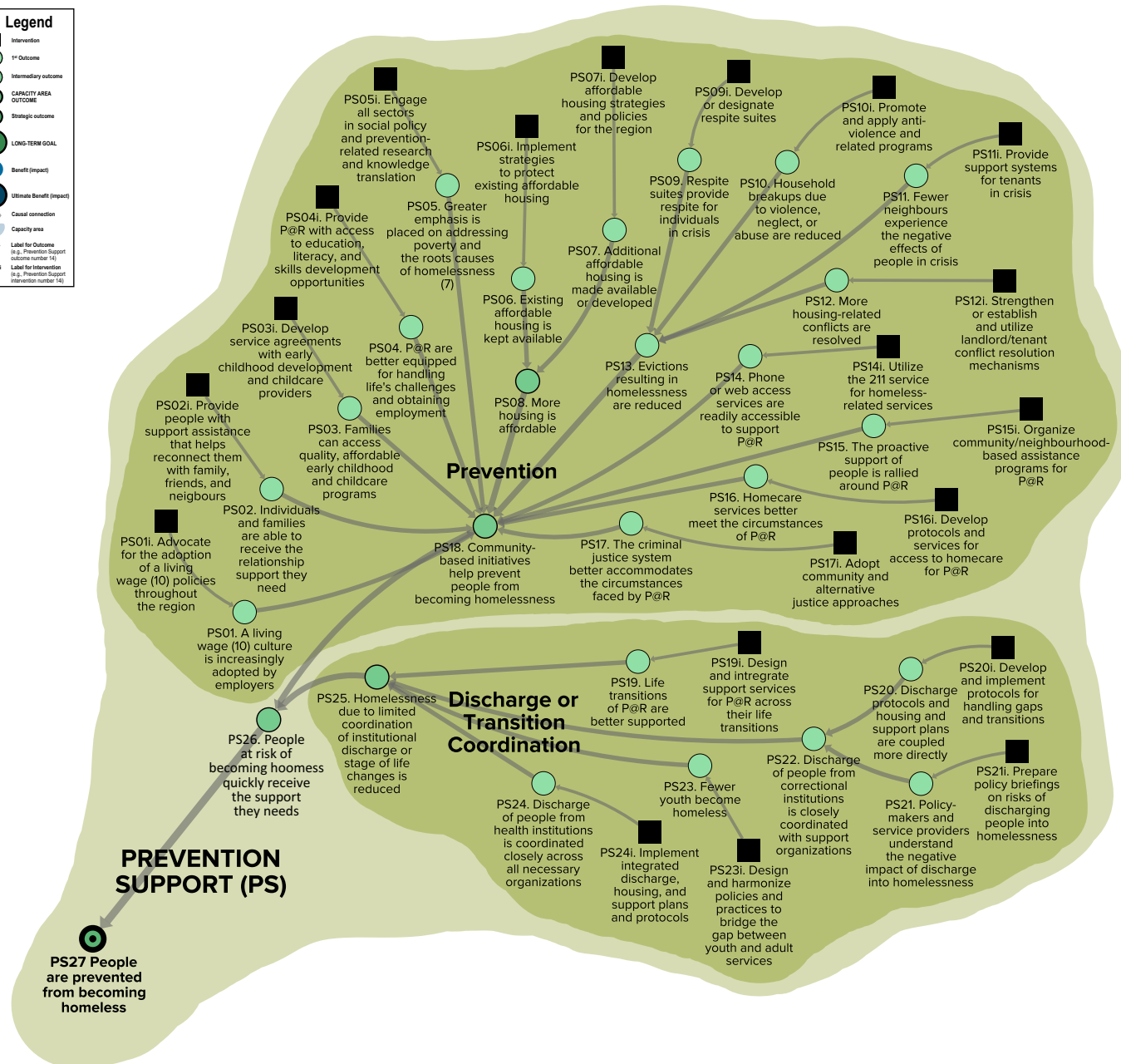
Collaborative Outcome Map
co-created by:
Regional Housing First Strategy
& Outcome Map Design Team
Facilitated by:
Yates, Thom & Associates
and R. Keith Jones & Associates
Victoria, BC, Canada
info@yates-thom.com
keith@rkeithjones.com
This map can also be made available
to you at <http://kumu.com/vc>

Legend

- Intervention
- 1st Outcome
- Intermediate outcome
- CAPACITY AREA OUTCOME
- Strategic outcome
- LONG-TERM GOAL
- Benefit (impact)
- Ultimate Benefit (impact)
- Causal connection
- Capacity area

PS14 Label for Outcome
(e.g. Prevention Support
outcome number 14)

PS16 Label for Intervention
(e.g. Prevention Support
intervention number 16)

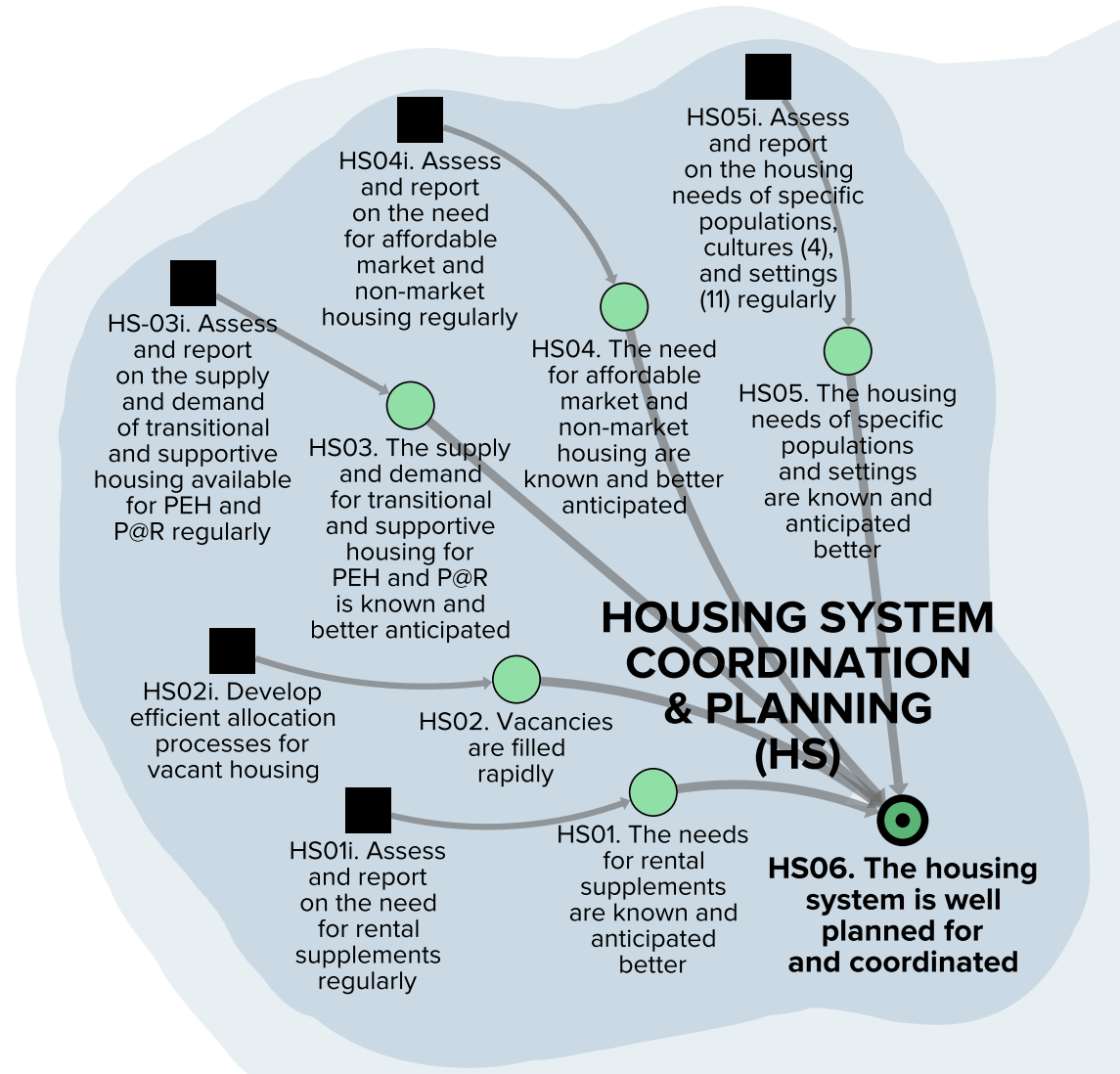
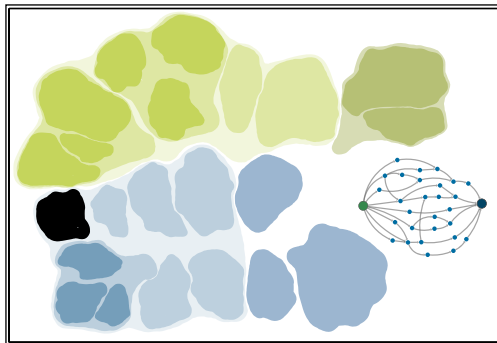
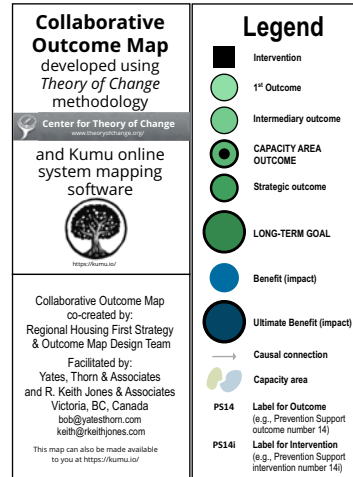


Regional Housing First Strategy

An collaborative outcome map to address homelessness in the capital region

30w x 33t
on wall

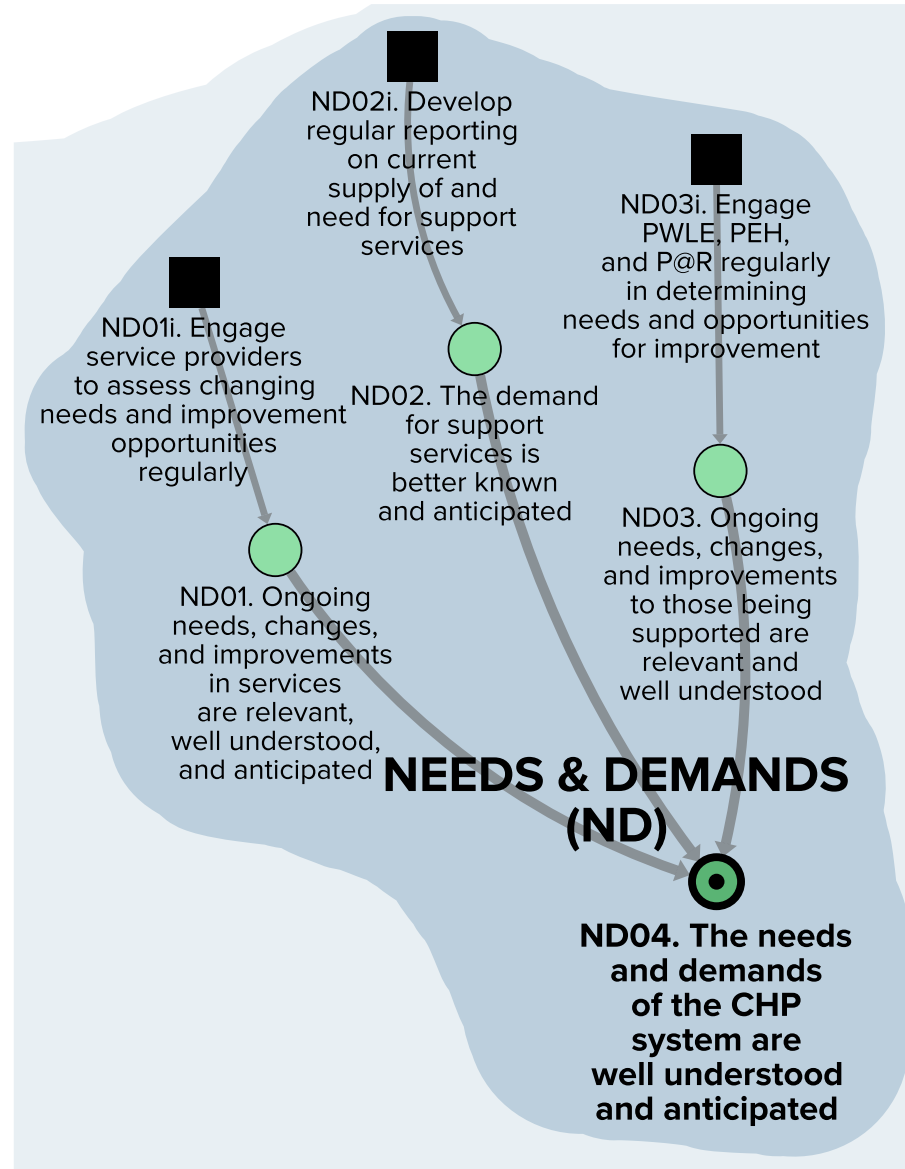
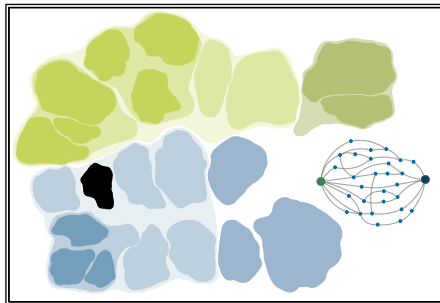
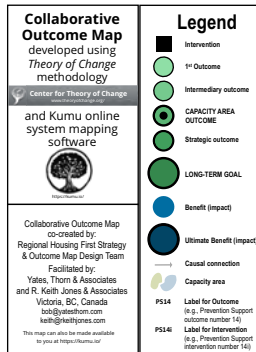
HOUSING SYSTEM COORDINATION & PLANNING: *The housing system is well planned and coordinated*



Regional Housing First Strategy
An collaborative outcome map to address homelessness in the capital region

28w x 33t
on wall

NEEDS & DEMANDS: *The needs and demands of the Community-Homelessness-Prevention System are well understood*




Regional Housing First Strategy
An collaborative outcome map to address homelessness in the capital region

34w x 36t
on wall

COORDINATED INTAKE, ASSESSMENT & REFERRAL: *People experiencing homelessness are provided housing and rehousing quickly without preconditions*

Collaborative Outcome Map
developed using
Theory of Change
methodology

Center for Theory of Change
and Kumu online
system mapping
software



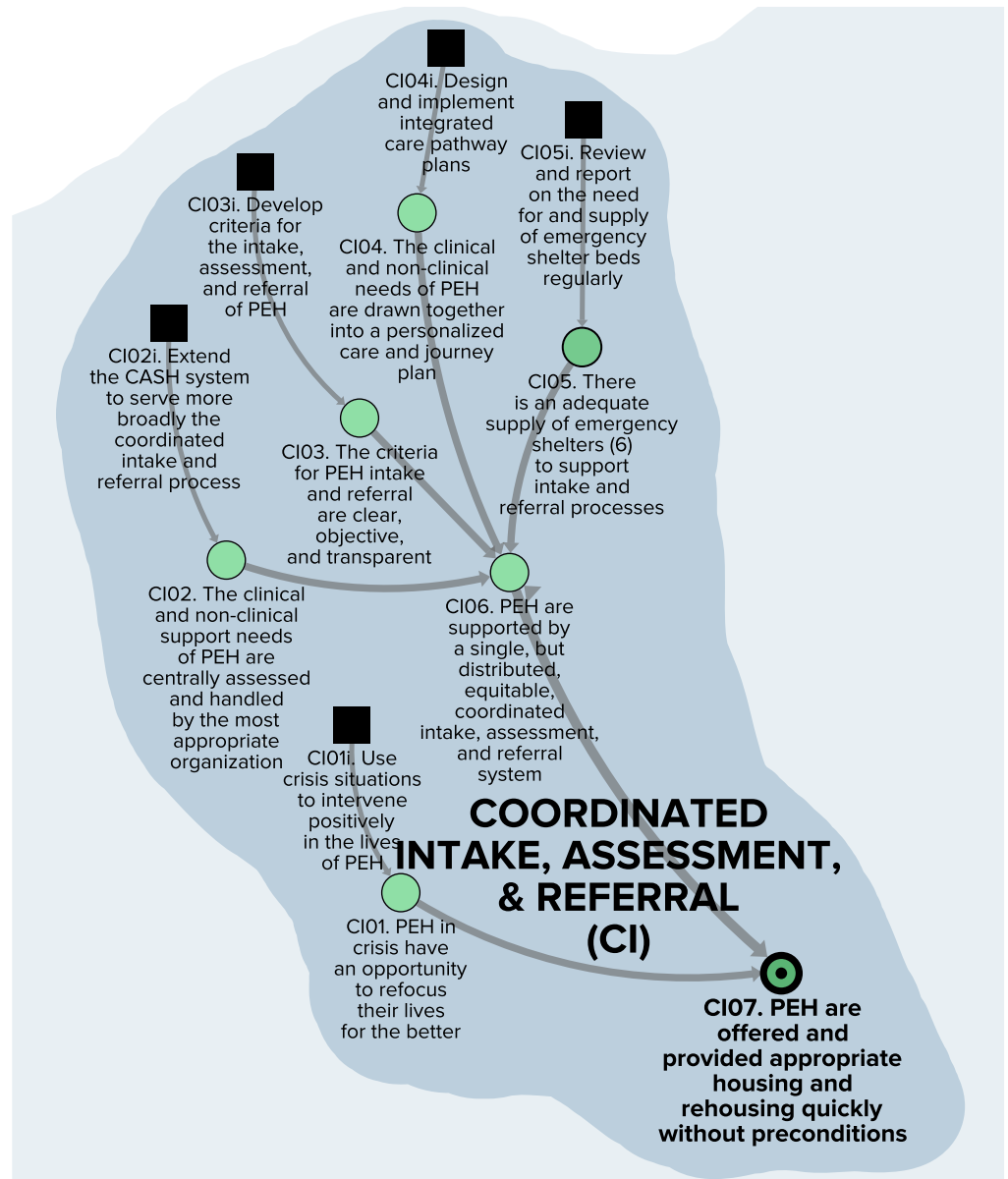
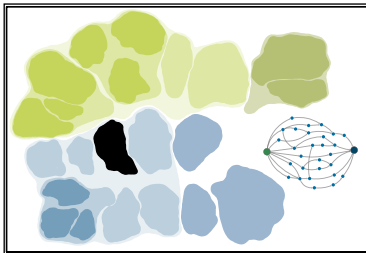
Collaborative Outcome Map
co-created by:
Regional Housing First Strategy
& Outcome Map Design Team
Facilitated by:
Yates, Thom & Associates
and R. Keith Jones & Associates
Victoria, BC, Canada
info@yates-thom.com
rkeith@rkeithjones.com
This map can also be made available
to your group at <https://kumu.io/>

Legend

- Intervention
- 1st Outcome
- Intermediate outcome
- CAPACITY AREA OUTCOME
- Strategic outcome
- LONG-TERM GOAL
- Benefit (impact)
- Ultimate Benefit (impact)
- Causal connection
- Capacity area

P134 Label for Outcome
(a.g., Prevention Support
outcome number 14)

P134 Label for Intervention
(a.g., Prevention Support
intervention number 14)



SHARED GOVERNANCE & ACCOUNTABILITY: *The Community-Homelessness-Prevention System has integrated governance, management, and accountability to drive transformative change*

Collaborative Outcome Map
developed using
Theory of Change
methodology

Center for Theory of Change

and Kumu online
system mapping
software

Collaborative Outcome Map
co-created by:
Regional Housing First Strategy
& Outcome Map Design Team

Facilitated by:
Yates, Thom & Associates
and R. Keith Jones & Associates

back@yates.com
rkeith@rkeithjones.com

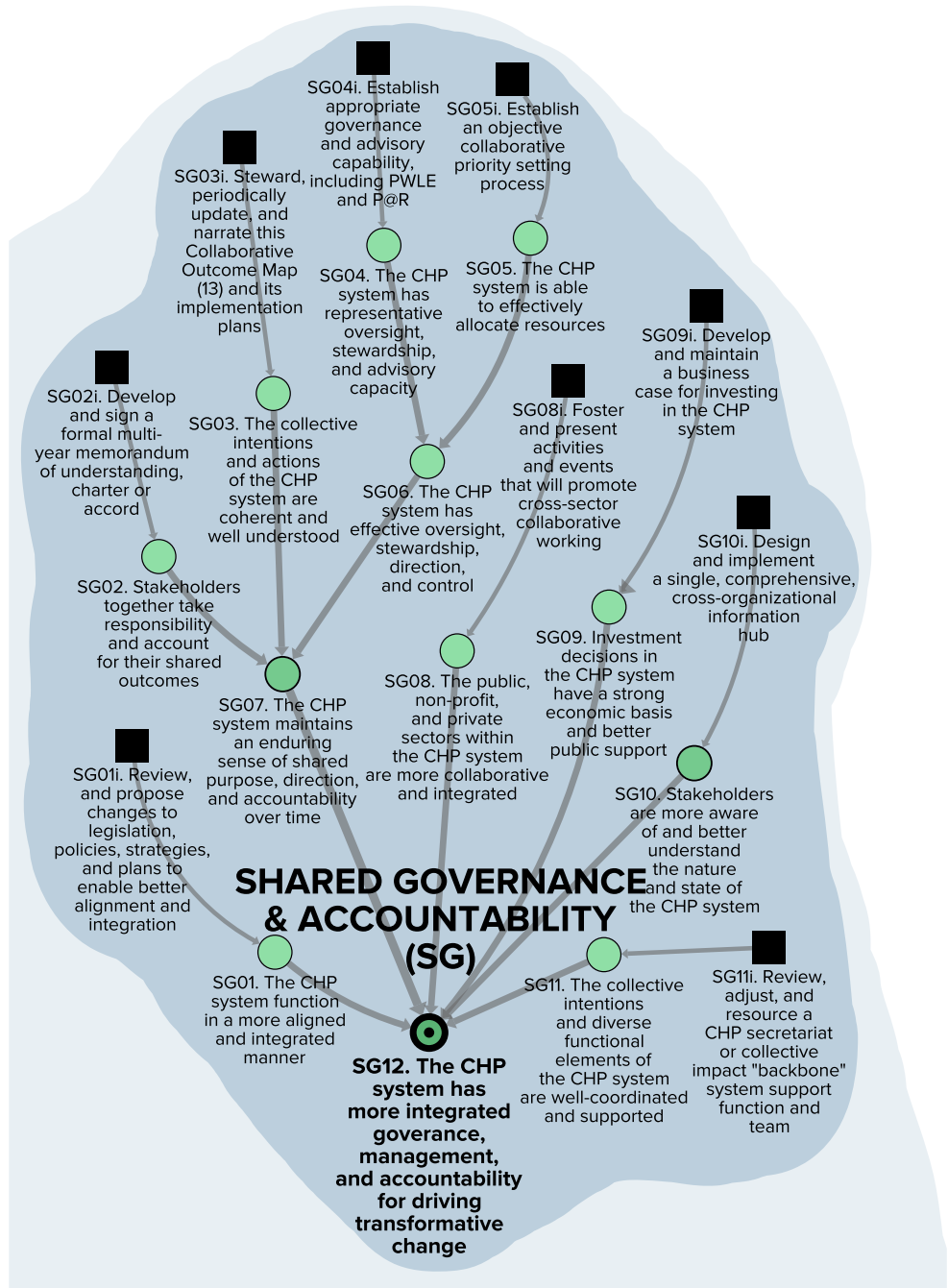
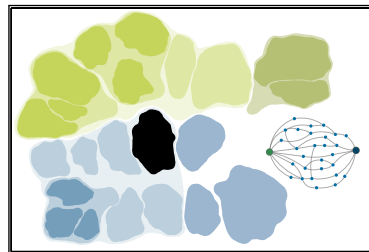
This map can also be made available
for you at <https://kumu.io/>

Legend

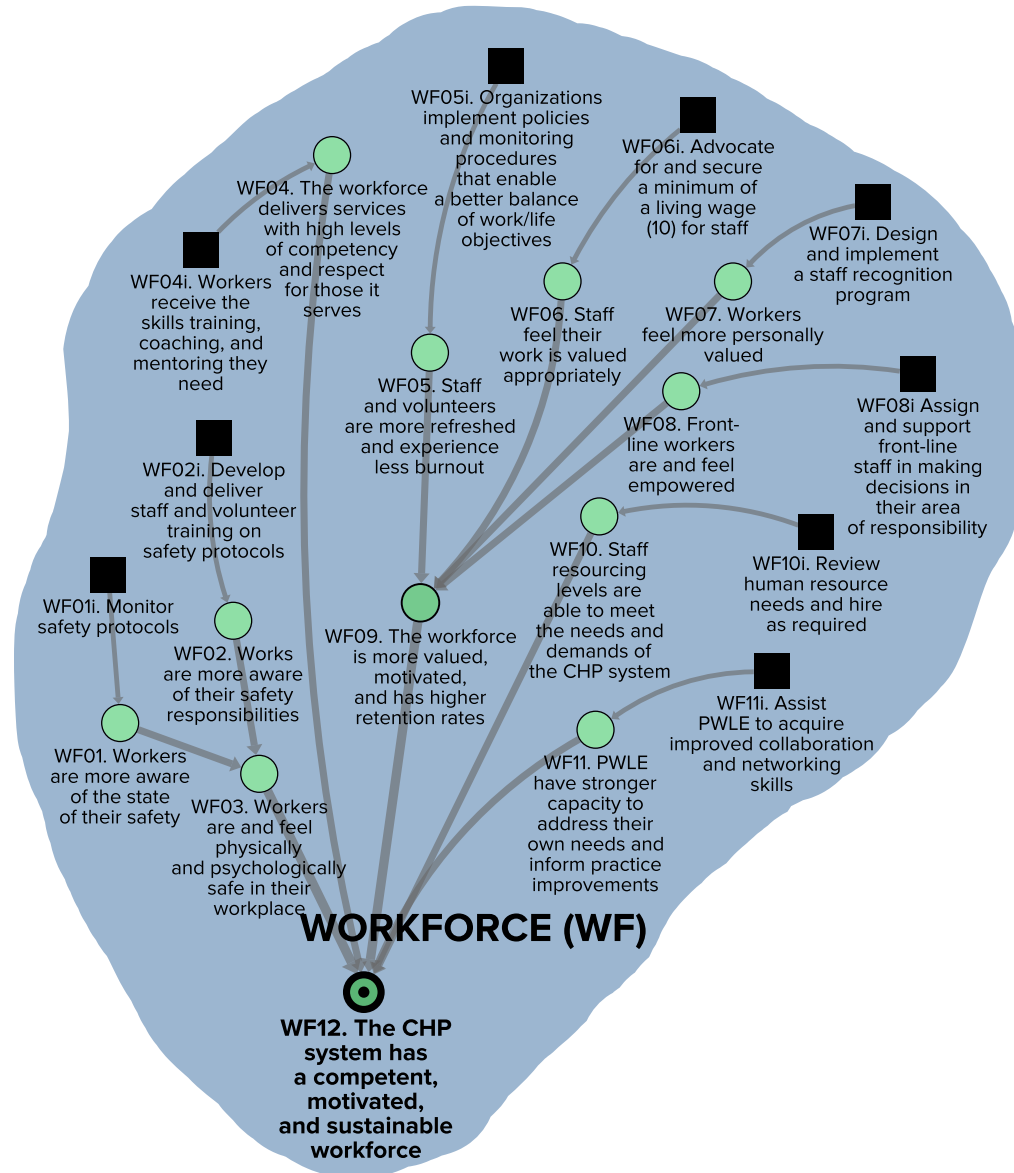
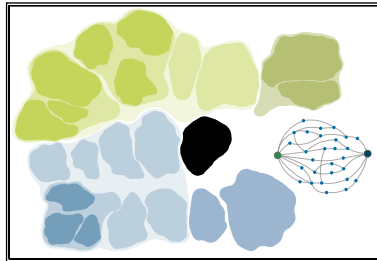
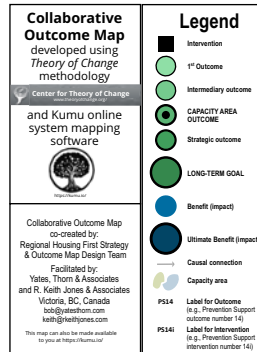
- Intervention
- 1st Outcome
- Intermediate outcome
- CAPACITY AREA OUTCOME
- Strategic outcome
- LONG-TERM GOAL
- Benefit (impact)
- Ultimate Benefit (impact)
- Causal connection
- Capacity area

P134 Label for Outcome
in g. Prevention Support
outcome number 14)

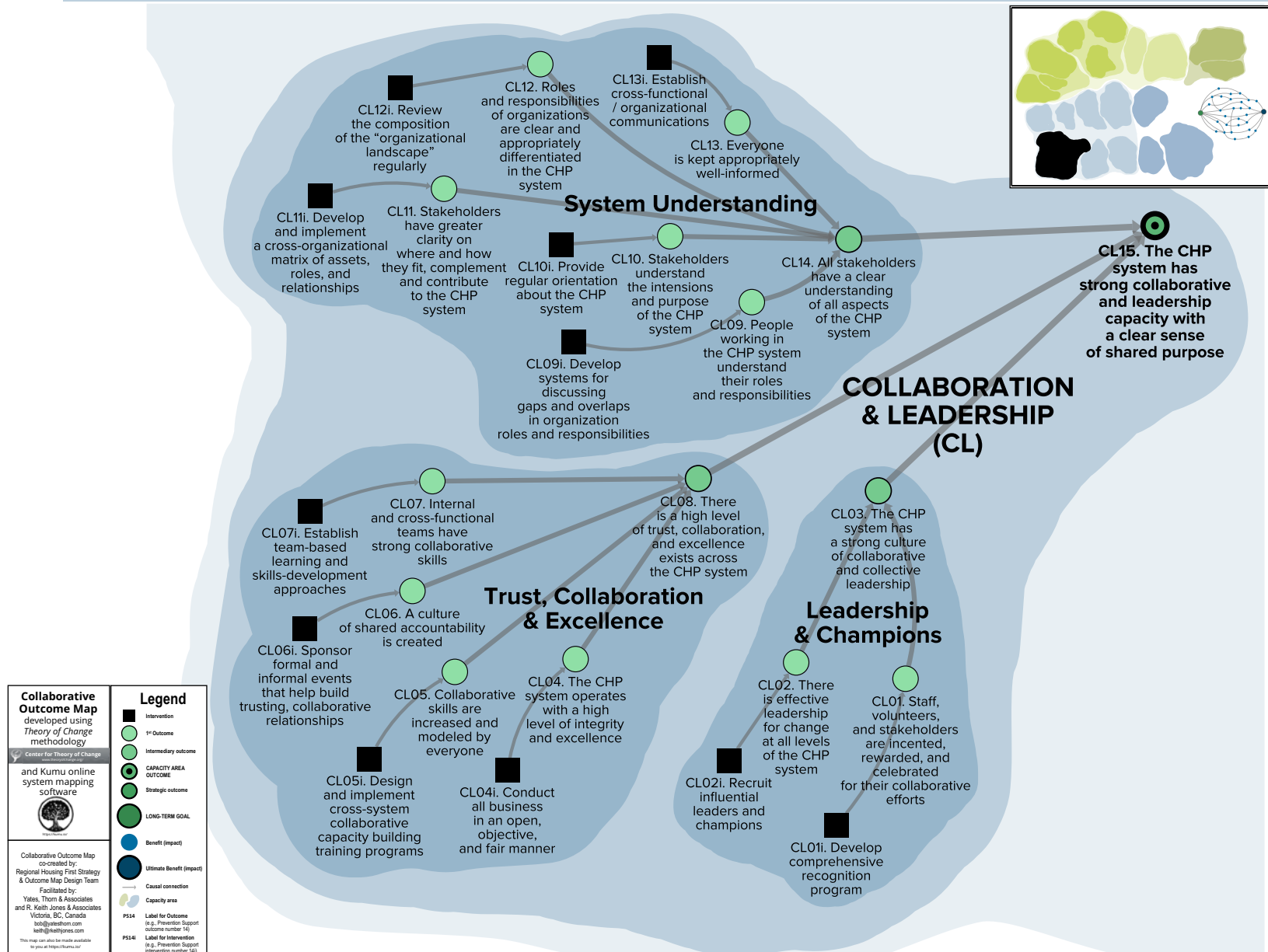
P134 Label for Intervention
in g. Prevention Support
intervention number 14)



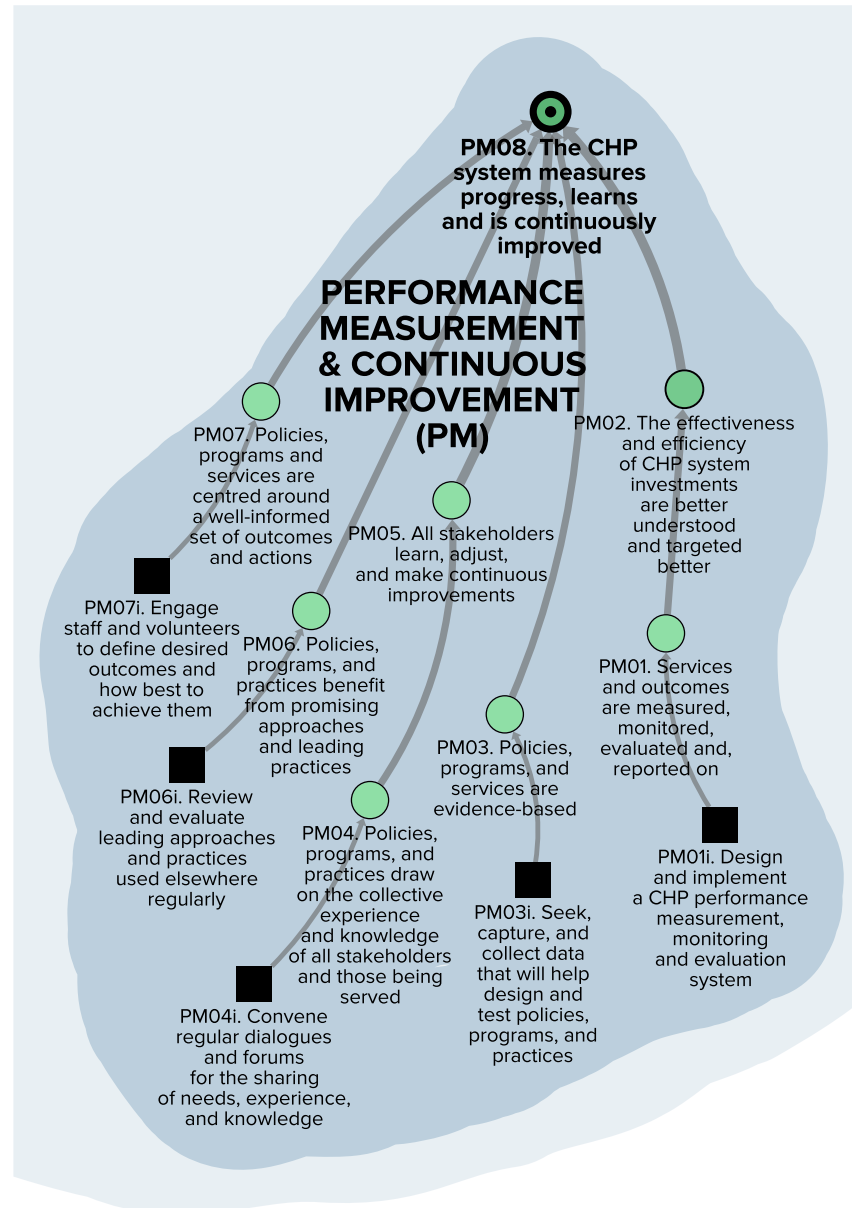
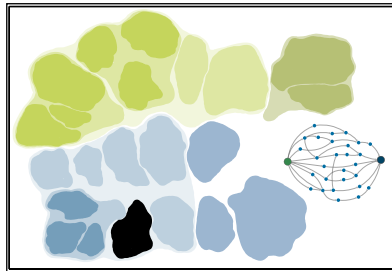
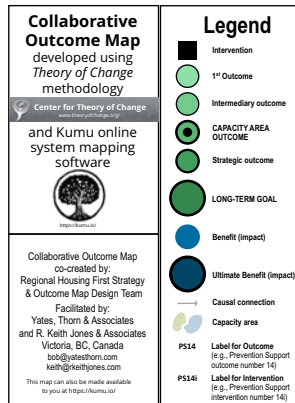
WORKFORCE: *The Community-Homelessness-Prevention System has a competent, motivated, and sustainable workforce*



COLLABORATION & LEADERSHIP: *The Community-Homelessness-Prevention System has strong collaborative and leadership capacity with a clear sense of shared purpose*



PERFORMANCE MEASUREMENT & CONTINUOUS IMPROVEMENT: *The Community-Homelessness-Prevention System measures progress, learns, and is continuously improved*



INFORMATION SYSTEMS: *The Community-Homelessness-Prevention System is well informed by fit-for-purpose, high value information*

Collaborative Outcome Map
developed using
Theory of Change
methodology

Center for Theory of Change

and Kumu online
system mapping
software

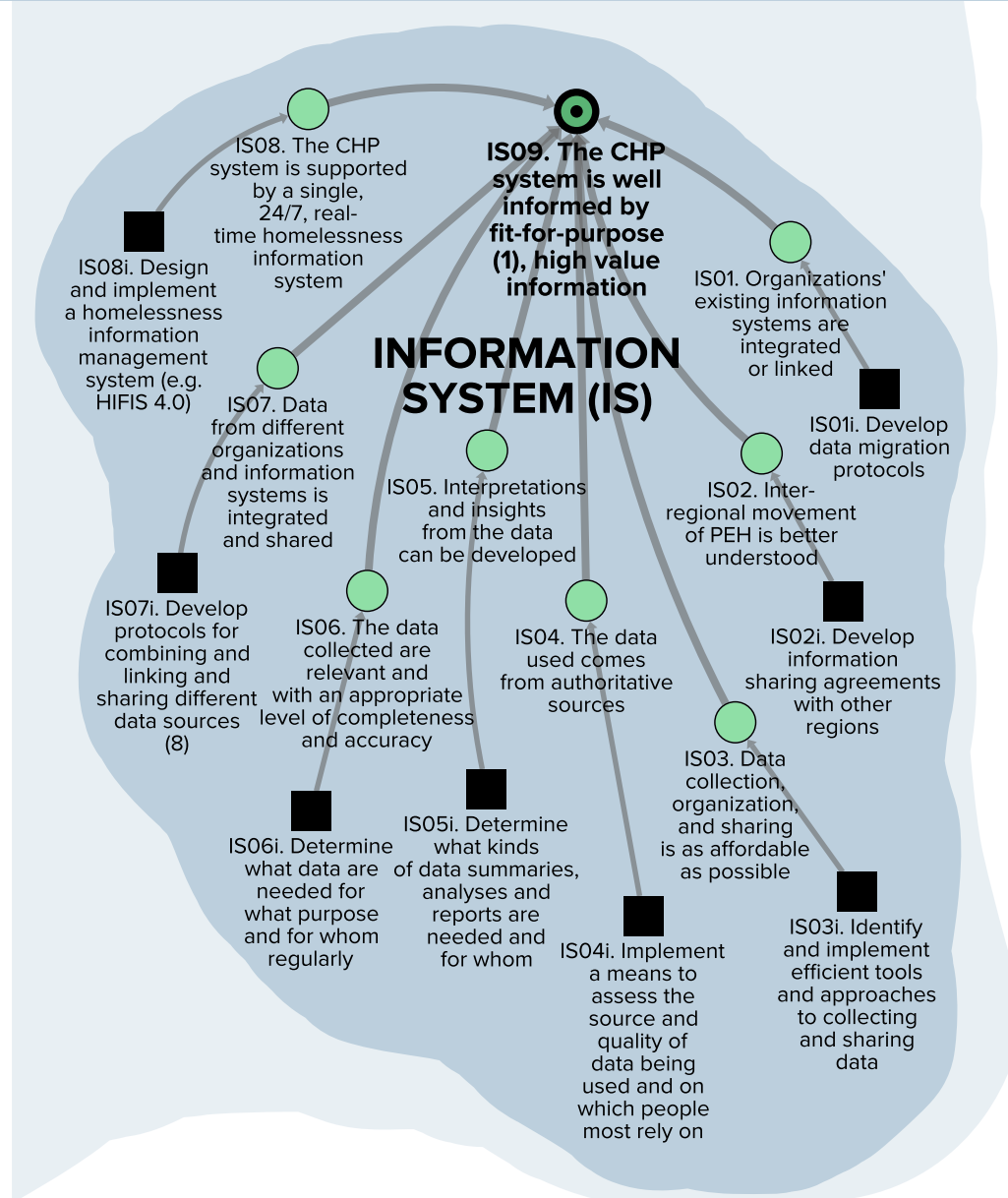
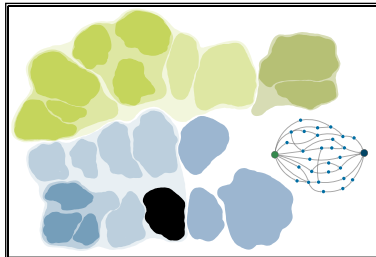
Collaborative Outcome Map
co-created by:
Regional Housing First Strategy
& Outcome Map Design Team
Facilitated by:
Yates, Thom & Associates
and R. Keith Jones & Associates
Victoria, BC, Canada
bob@yatesthom.com
keith@rkeithjones.com
This map can also be made available
to you at <https://kumu.io/>

Legend

- Intervention
- 1st Outcome
- Intermediate outcome
- CAPACITY AREA OUTCOME
- Strategic outcome
- LONG-TERM GOAL
- Benefit (Impact)
- Ultimate Benefit (Impact)
- Causal connection
- Capacity area

P514 Label for Outcome
(e.g., Prevention Support outcome number 14)

P514i Label for Intervention
(e.g., Prevention Support intervention number 14i)



Regional Housing First Strategy
An collaborative outcome map to address homelessness in the capital region


28w x 32t
on wall

RESEARCH & INNOVATION: *The Community-Homelessness-Prevention System is more innovative helping to drive transformative change*

Collaborative Outcome Map
developed using
Theory of Change
methodology

Center for Theory of Change
www.theoryofchange.org/

and Kumu online
system mapping
software


<https://kumu.io/>

Legend

- Intervention
- 1st Outcome
- Intermediary outcome
- CAPACITY AREA OUTCOME
- Strategic outcome
- LONG-TERM GOAL
- Benefit (impact)
- Ultimate Benefit (Impact)
- Causal connection
- Capacity area

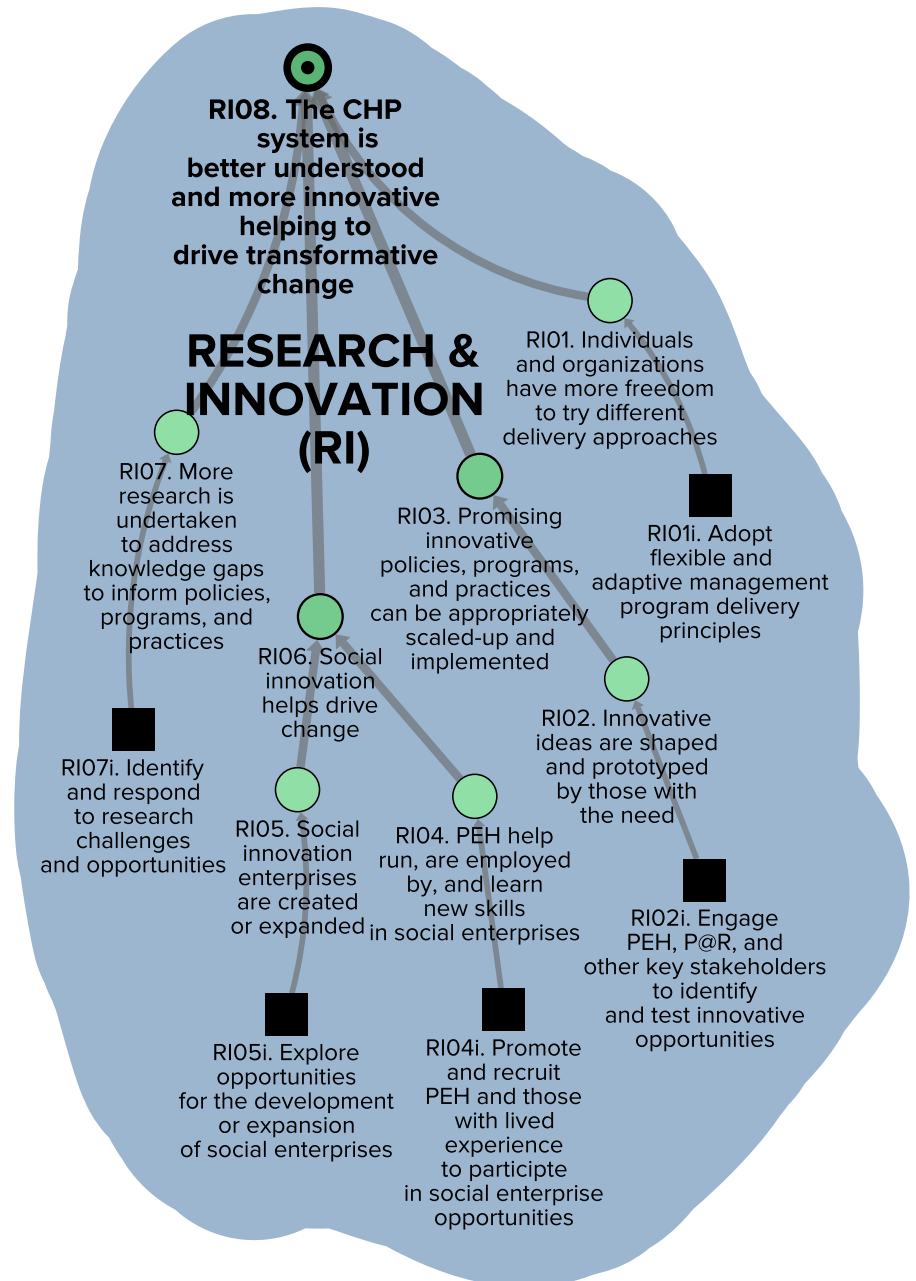
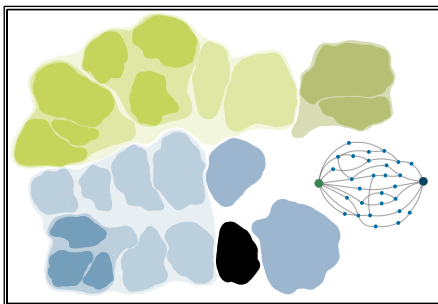
PS14 Label for Outcome
(e.g., Prevention Support outcome number 14)

PS14i Label for Intervention
(e.g., Prevention Support intervention number 14i)

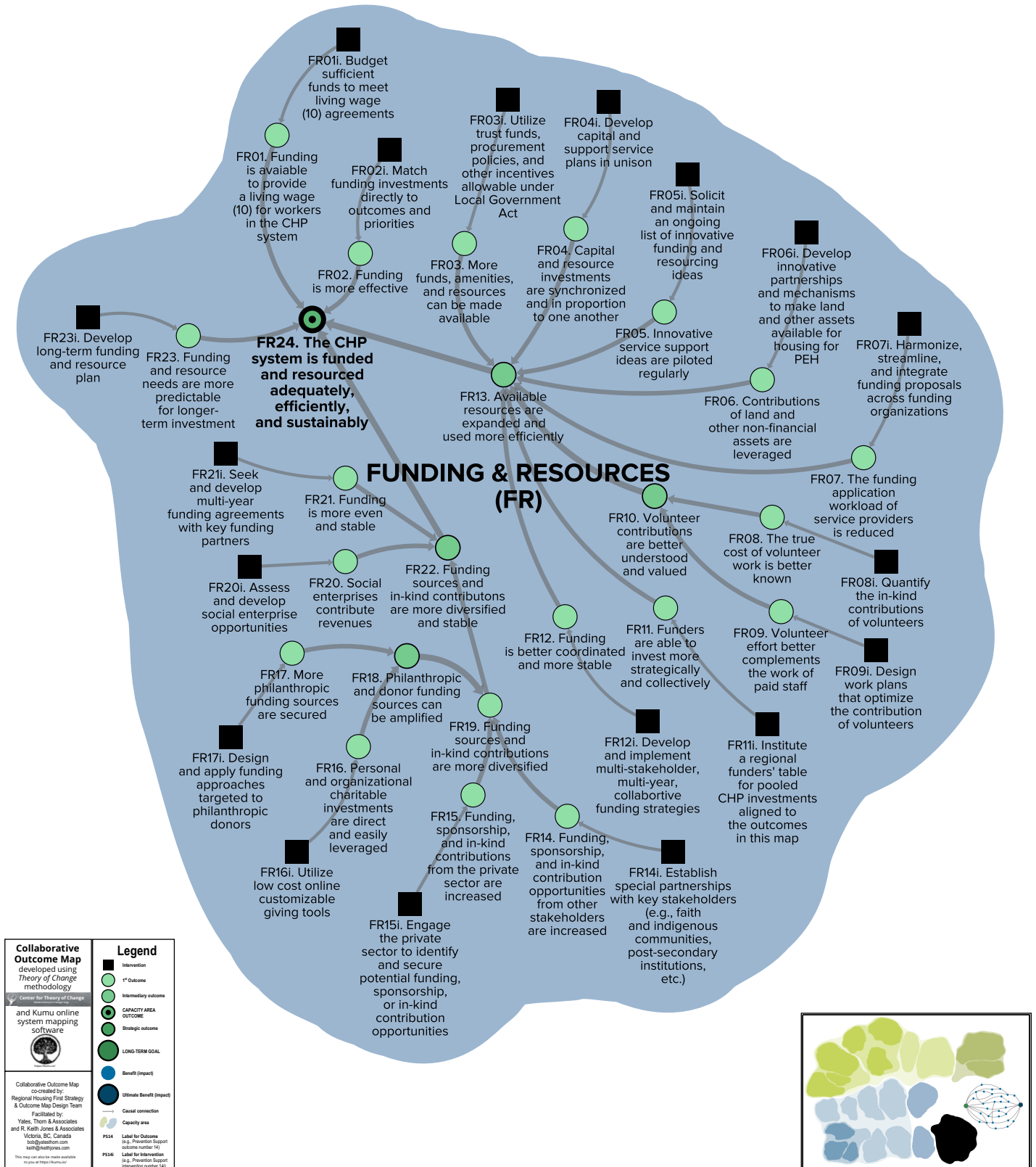
Collaborative Outcome Map
co-created by:
Regional Housing First Strategy
& Outcome Map Design Team

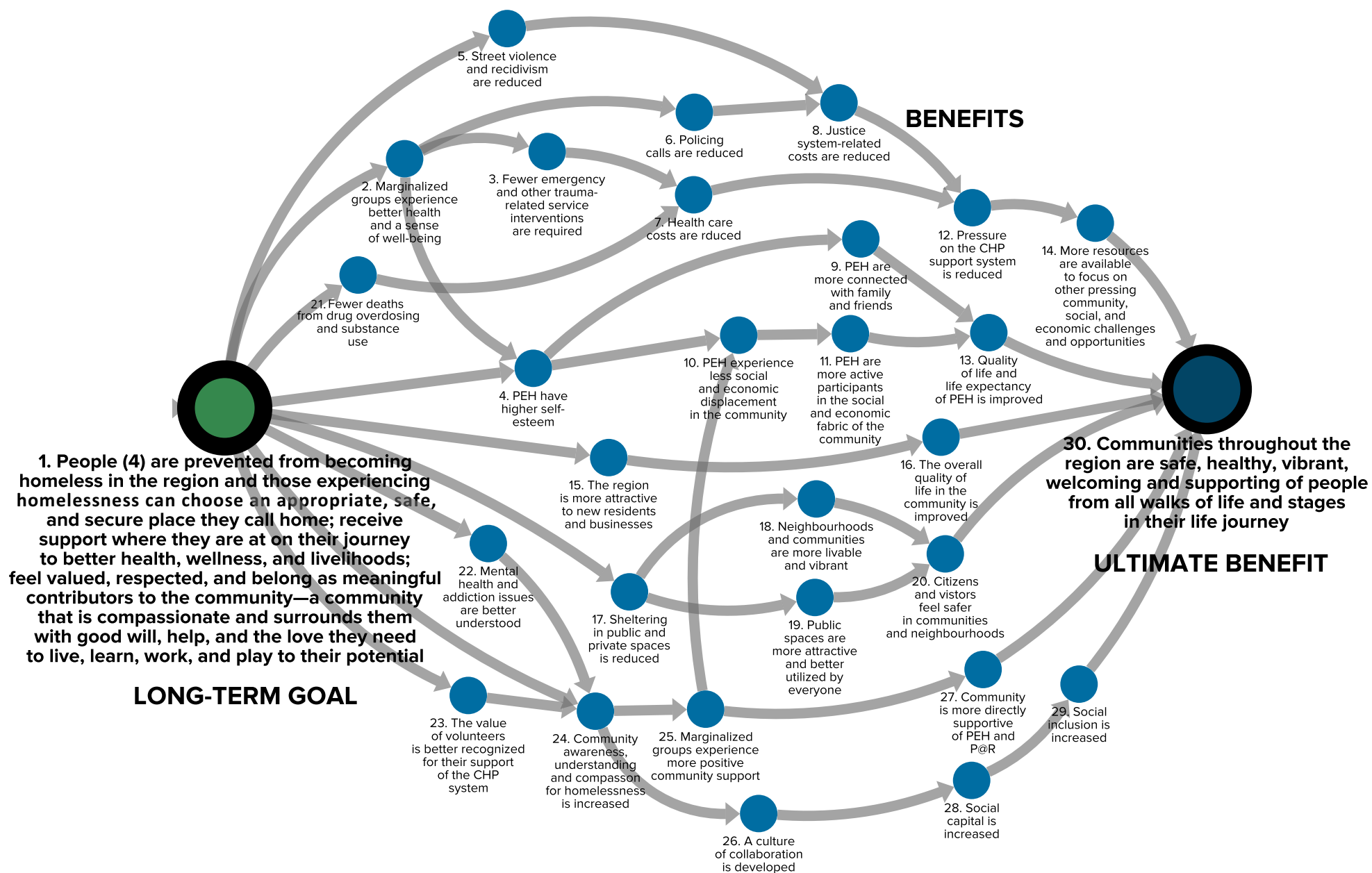
Facilitated by:
Yates, Thom & Associates
Victoria, BC, Canada
bob@yatesthom.com
kath@kellyjones.com

This map can also be made available
to you at <https://kumu.io/>



FUNDING & RESOURCES: *The Community-Homelessness-Prevention System is Funded and Resources Adequately, Efficiently, and Sustainably*





"HOUSING FIRST APPROACH"

People experiencing homelessness have a choice of safe, appropriate, and stable housing with support services provided in a respectful manner

Transition and Supportive Permanent Housing: Additional affordable non-market housing is available for people experiencing homelessness

Sense of Home: Housing environments provide a sense of home for people experiencing homelessness

Market and Non-Market Rental Housing: An adequate supply of affordable market and non-market housing provides choice to people experiencing homelessness

Support People Where They Are At: People experiencing homelessness are supported over the course of their care pathway and journey toward realizing their potential

Live, Learn, Work & Play: People experiencing homelessness have more skills and are more competent for living, working, learning and leisure

Health, Wellness & Day-to-Day Services: People experiencing homelessness have improved access a range of health, wellness and basic day-to-day services provided in a respectful manner

HOUSING: There is adequate housing supply for people experiencing homelessness to choose from a spectrum of safe and affordable housing

SUPPORT SERVICES: Support services have the ongoing capacity to support people experiencing homelessness across the region

RESPECTFUL DELIVERY: People experiencing homelessness feel valued and respected as they are supported

ADVOCACY & AWARENESS: Communities and neighbourhoods are more empathetic, compassionate, inclusive, and welcoming of people experiencing homelessness

PREVENTION SUPPORT

Prevention: Community-based initiatives help prevent people from becoming homelessness

Discharge or Transition Coordination: Homelessness due to limited coordination of institutional discharge or stage of life changes is reduced

PREVENTION SUPPORT: People are prevented from becoming homeless

SYSTEM MANAGEMENT

The community-homelessness-prevention system is collaborative, well managed, and accountable

System Understanding: All stakeholders have a clear understanding of all aspects of the community-homelessness-prevention system

Trust, Collaboration & Excellence: There is a high level of trust, collaboration, and excellence exists across the community-homelessness-prevention system

Leadership & Champions: The community-homelessness-prevention system has a strong culture of collaborative and collective leadership

COLLABORATION & LEADERSHIP: The community-homelessness-prevention system has strong collaborative and leadership capacity with a clear sense of shared purpose

PERFORMANCE MEASUREMENT & CONTINUOUS IMPROVEMENT: The community-homelessness-prevention system measures progress, learns and is continuously improved

INFORMATION SYSTEMS: The community-homelessness-prevention system is well informed by fit-for-purpose, high value information

HOUSING SYSTEM COORDINATION & PLANNING: The housing system is well planned for and coordinated

NEEDS & DEMANDS: The needs and demands of the community-homelessness-prevention system are well understood and anticipated

COORDINATED INTAKE, ASSESSMENT & REFERRAL: People experiencing homelessness are offered and provided appropriate housing and rehousing quickly without preconditions

SHARED GOVERNANCE & ACCOUNTABILITY: The community-homelessness-prevention system has more integrated governance, management, and accountability for driving transformative change

WORKFORCE

WORKFORCE: The community-homelessness-prevention system has a competent, motivated, and sustainable workforce

RESEARCH & INNOVATION

RESEARCH & INNOVATION: The community-homelessness-prevention system is better understood and more innovative helping to drive transformative change

FUNDING & RESOURCES

FUNDING & RESOURCES: The community-homelessness-prevention system is funded and resourced adequately, efficiently, and sustainably

This summary chart was derived from a much more detailed Collaborative Outcome Map (COM) that was developed using the *Theory of Change* methodology (www.theoryofchange.org) and Kumu system mapping software. A multi-stakeholder Design Team of over 25 people co-created the COM. To obtain this chart or the detailed map, please contact the Greater Victoria Coalition to End Homelessness at admin@victoriahomelessness.ca or phone 250-370-1512.



People are prevented from becoming homeless in the region and those experiencing homelessness can choose an appropriate, safe, and secure place they call home; receive support where they are at on their journey to better health, wellness, and livelihoods; feel valued, respected, and belong as meaningful contributors to the community—a community that is compassionate and surrounds them with good will, help, and the love they need to live, learn, work, and play to their potential

Communities throughout the region are safe, healthy, vibrant, welcoming and supporting of people from all walks of life and stages in their life journey

Progress on this goal will contribute to many benefits:

- Marginalized groups experience better health and a sense of well-being
- Health care costs are reduced
- Mental health and addiction issues are better understood
- Justice system costs are reduced
- People experiencing homelessness have higher self-esteem
- Community awareness, understanding, and compassion is increased
- Neighbourhoods and communities are more livable and vibrant
- People experiencing homelessness are more active participants in the social and economic fabric of the community
- Citizens and visitors feel safer in communities and neighbourhoods
- Quality of life and life expectancy of people experiencing homelessness is improved
- More resources are available to focus on other pressing community, social, and economic challenges and opportunities